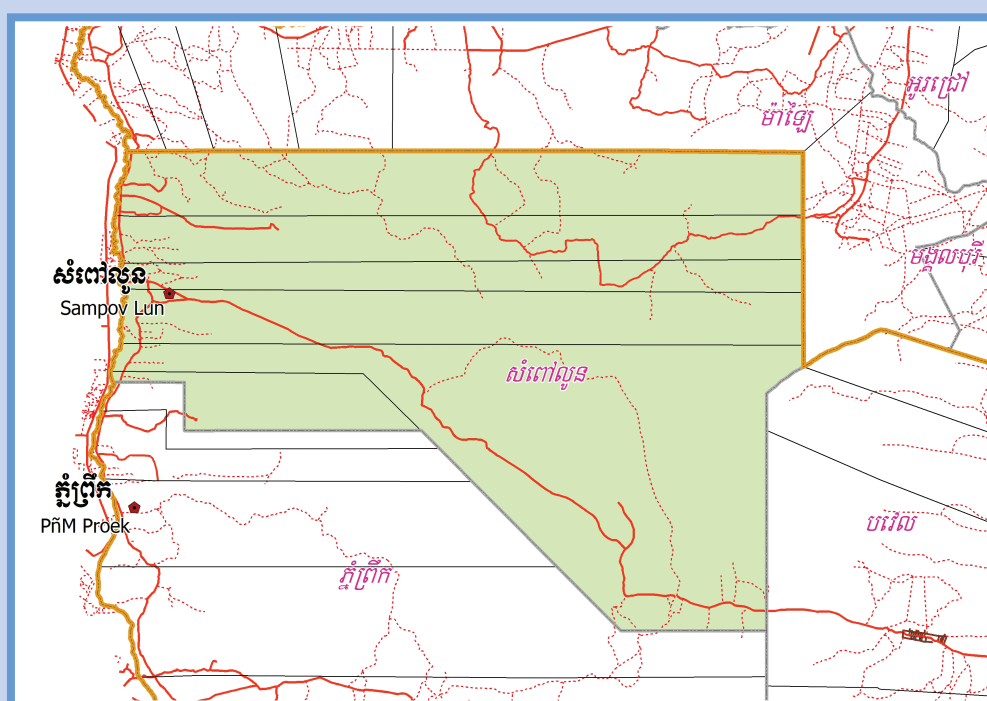


**KINGDOM OF CAMBODIA**  
**Nation Religion King**



**National Committee for Sub-National  
Democratic Development (NCDD)**



**SAMPOV LUN DISTRICT DATA BOOK 2009**

**District Code Nr: 210**  
**Battambang Province**

**October 2009**



# **Sampov Lun District Data Book 2009**

District Code Nr: 210

**Battambang Province**



# Table of Contents

List of Abbreviations .....	i
Glossary.....	ii
Preface .....	vi
Introduction .....	vii
SECTION A: GEOGRAPHY .....	1
1 Administration and Infrastructure.....	3
2 Land Use and Natural Resources.....	5
3 Geography .....	7
3.1 Land Area .....	7
3.2 Distances between Offices .....	7
SECTION B: DISTRICT PROFILE .....	9
1 General Information .....	11
1.1 Population of the District.....	11
1.2 Occupations .....	12
1.3 Property .....	14
2 Infrastructure and Economy.....	16
2.1 Roads in meters over 3 years.....	16
2.2 Sewerage Pipes in meters over 3 years.....	16
2.3 Drainage and Bridges .....	16
2.4 Services in the District .....	16
2.5 Agriculture.....	17
3 Social Aspects .....	27
3.1 Education .....	27
3.2 Health.....	33
3.3 Water and Sanitation .....	35
3.4 Vulnerable groups.....	39
3.5 Migration .....	41
4 Natural Resources and Environment (NRE).....	43
4.1 Families involved with NRE issues over 3 years .....	43
4.2 Percentage of Families involved with Natural Resource issues, by Commune, for 2008 .....	43
4.3 Percentage Houses with access to Garbage collection and Families affected by environmental Pollution, by Commune, for 2008 .....	43
4.4 Percentage Families using chemical Fertilizer and chemical Pesticides, by Commune, for 2008 ..	44
5 Administration and Security .....	44

5.1	Birth Registration across 3 years.....	44
5.2	Number of unregistered Infants born in 2008, by Commune .....	44
5.3	Registered criminal Cases over 3 years .....	44
5.4	Registered criminal Cases per 10,000 people, by Commune, for 2008.....	45
5.5	Number of registered Land Disputes, by Commune, in 2008 .....	45
6	Gender .....	45
6.1	Registered Domestic Violence over 3 years.....	45
6.2	Percentage of registered cases of Families experiencing domestic Violence, by Commune, in 2008 .....	46
6.3	Women's involvement over 3 years.....	46
6.4	Percentage of Female Participants in Civil Society and of 18-60 year women with uncertain Jobs, by Commune, in 2008 .....	46
6.5	Female-headed Households over 3 years.....	46
6.6	Percentage female-headed Households and with Children of less than 5 years old, by Commune, in 2008 .....	47
7	Indigenous People in the District .....	47
7.1	Ethnic Minorities in the District over 3 years.....	47
7.2	Other Minorities in the District over 3 years.....	47
	SECTION C: PLANS AND PROJECTS .....	49
8	Priorities and Plans .....	51
8.1	Priorities of Commune Councils for 2009 in the District by Sector .....	51
8.2	Temporary Agreements by Commune, for 2009 .....	55
8.3	Outputs, estimated and actual costs of C/S Fund Projects between 2005 and 2008, by Commune .....	64
8.4	Total Expenditure on C/S Fund Projects by sector and commune between 2005 and 2008.....	65
8.5	Actual 2009 C/S Fund projects by Commune .....	66
9	District level Projects from 2006 to 2009 .....	67
9.1	District Initiative Infrastructure Projects from 2006 to 2009 .....	67
9.2	District Initiative Service Projects from 2006 to 2009 .....	67
9.3	Inter Commune Council Projects in 2008 and 2009 .....	68
9.4	Other Projects in 2008 and 2009 .....	68
	SECTION D: SERVICES AND ORGANIZATIONS .....	69
10	Infrastructure.....	71
10.1	Length of and Expenditure on Roads in 2008, by District .....	71
10.2	Scale of and Expenditure on Irrigation in 2008, by District.....	72
10.3	Power Supply in 2008, by District .....	73
11	Health Facilities.....	74

11.1 Health Facilities in the Province, by Operational District.....	74
11.2 Health Facilities and Staff in the province, by Operational District.....	75
11.3 Deliveries in 2007 in the Province, by Operational District.....	77
12 Education .....	78
12.1 Schools, Classes, Students, Staff, for for all levels, for 2007/2008 by District.....	78
12.2 Characteristics of Schools and School Principals for 2007/2008 by Commune .....	78
12.3 Enrolment by Level of Education, 2006/2007 by Commune .....	79
12.4 Enrolment by Level of Education, 2007/2008 by Commune .....	79
12.5 Aspects of Enrolment for 2007/2008 by Commune.....	79
12.6 School Buildings for all schools in the District for 2007/2008, by Commune .....	80
12.7 Conditions of Classrooms and Existence of Separate School Office and Library, by Commune	80
12.8 Community Participation and Financing across all schools in the District for 2007/2008 by Commune .....	80
12.9 Percentage Student Flow Rates and Graduation by level 2006/2007, by Commune .....	81
13 Staff and Resources at the District .....	82
13.1 District Councilors elected in 2009 .....	82
13.2 Committees of the Council.....	82
13.3 Board of Governors.....	82
13.4 Offices under Sala Krong, Sala Srok and Sala Khan .....	83
13.5 Municipality/District/Khan line offices.....	83
13.6 Properties and Equipment of District Administration .....	83
13.7 Registered Revenue of the District Administration in 2008 .....	84
13.8 Services in the District .....	85
13.9 Civil Society Organizations active in the District.....	85
13.10 Private Sector Organizations.....	86
SECTION E: POVERTY DATA .....	89
14 Data on Poverty .....	91
14.1 Predicted Poverty Rates for 2009, by commune .....	91
14.2 Poverty data from survey.....	91





## List of Abbreviations

#	Number
AGR	Agriculture
BR	Birth Registration
C. Pilot	Piloted Commune
C/S	Commune / Sangkat
CBO	Community-Based Organization
CDB	Commune Database
CDPD	Commune Development and Planning Database
CIP	Commune Investment plan
CLTS	Community Led-Total Sanitation
Comm.	Commune
Com Cov	Commune Covered
CPA	Complementary Package of Activities
CPS	Community Preschool
CCWC	Commune Committees for Women and Children
DANIDA	Danish International Development Agency
DDLG	Democratic Development and Local Governance Project (EC-UNDP)
DFID	Department For International Development (UK)
DIP	District Initiative Project
DIS	District Information System
District PDRD	District Office of Rural Development
District WP	District Work Plan
DIW	District Integration Workshop
DoLA	Department of Local Administration
Dr	Doctor
DWRM	District Office of Water Resource and Meterology
ECD	Early Childhood education (part of PE)
EMIS	Education Management Information System
Event IC	Celebration of International Days
FDH	Former District Hospital
GTZ	German Society for Technical Cooperation (Gesellschaft für Technische Zusammenarbeit GmbH)
Ha	Hectare
HC	Health Center
HC (NB)	Health Center (no building)
HH	Headed Household
HSI	Intervention for Health
HP	Health Post
HW	Hand Washing
ICC	Inter Commune Council
IFAD	International Fund for Agricultural Development
IND	Industry
Inter-commune	Inter-Commune Project Management Committee or Inter-commune project
IO	International Organization
LASED	Land Allocation for Socio-Economic Development
LGCR	Local Governance for Children's Rights
M&E	Monitoring and Evaluation
MA	Medical Assistant
MoEYS	Ministry of Education, Youth and Sports
MoH	Ministry of Health

MoP	Ministry of Planning
MPA	Minimum Package of Activities
MW1	Primary Midwives
MW2	Secondary Midwives
n/a	Not available
NCD	National Contracts Database
NCDD	National Committee for Sub-National Democratic Development
NGO	Non-Governmental Organization
NRML	Natural Resources Management and Livelihood
NU1	Primary Nurse
NU2	Secondary Nurse
OD	Operational District
ODF	Open Defecation Free
Ope. Costs	Operational Costs
Others	Other Staff
PBW	Public Works
PDoEYS	Provincial Department of Education, Youth and Sport
PDRD	Provincial Department of Rural Development
PDWRM	Provincial Department of Water Resource and Meteorology
PE	Parenting Education
PHAST	Participatory Hygiene and Sanitation Transformation
PHD	Provincial Health Department
PID	Project Information Database
PMC	Project Management Committee
Pop 04-05	Population Covered 2004 or 2005
PSDD	Project to Support Democratic Development through Decentralization and Deconcentration
RRD	Rural Road Development
RH	Referral Hospital
RILGP	Rural Investment and Local Governance Project
RPRP	Rural Poverty Reduction Program
RuLIP	Rural Livelihoods Improvement Program
SIDA	Swedish International Development Cooperation Agency
SPPA	Senior Provincial Program Advisor
TBA	Traditional Birth Attendant
UNDP	United Nations Development Project
UNICEF	United Nations Children's Fund
Vil	Village
Vil Cov	Village Covered
VIL-HC	Distance from Village to Health Center
WASH	Water, Sanitation and Hygiene
WRM	Water Resource and Meteorology

## Glossary

**C/S Fund:** The Commune/Sangkat Fund is established and managed by the Government of Cambodia to provide financial support for development projects and administrative costs of Commune/Sangkat Councils. The amount is determined as a percentage of the National Budget (for 2009: 2.8% over the 2008 budget) and is expected to increase gradually over the years. The total 2009 budget under this fund is \$ 27,643,902 (of which \$ 19,272,170 is for Development Projects and \$ 8,371,731 for Administration). Under the Rural Investment and Local Governance Project the World Bank currently reimburses the costs of development projects if these meet the Bank's criteria.

**CDB:** the Commune Data Base is a national database, compiled by the Ministry of Planning, on the basis of detailed questionnaires, completed at village and commune level, which are then sent to the Departments of Planning for data entry. The most recent round of data collection took place at the end of 2008 (and is reflected in the District Data Books). Commune, District and Provincial Profiles can be generated from this database and should be available from provincial Departments of Planning.

**CDPD:** the Commune Development and Planning Database is a database maintained by Departments of Planning and Ministry of Planning, recording proposed activities as determined and prioritized by Commune and Sangkat Councils; the Temporary Agreements between these councils and supporting agencies, as decided at District Integration Workshops and details on projects that actually take place at commune, district and provincial levels.

**CIP:** The Commune Investment Plan is a rolling three-year plan, developed and decided by the Commune or Sangkat Council. It sets priorities and identifies the projects proposed for the years to come.

**Commune and Sangkat (C/S):** the Communes (in rural areas) and Sangkats (in urban areas) are the lowest and smallest units of local government. Councils are elected directly, once in five years, for the 1417 Communes and 204 Sangkats. In the C/S there are 14,119 villages, which have Village Chiefs, but don't constitute a formal level of local government.

**DIP:** the District Initiative Project is jointly supported by the MDLF (Multi-Donor Livelihood Facility (supporting the NRM&L Program)) and PSDD. In 2009 it covers 106 districts, 60% of the total in the country, with a budget of \$ 3.2 million. It is focused on capacity development in planning, democratic development, public competitive procurement, financial management and service delivery.

**DIS:** The District Information System is a national database maintained by NCDD, recording resources, staff, revenue, infrastructure and equipment available in the 193 Districts and Khans throughout the country. The last update took place in July 2009.

**District, Municipality and Khan** constitutes the third level of Government in Cambodia. There are 159 rural Districts, 26 Municipalities and 8 Khans of Phnom Penh Capital. They all have Councils which were, for the first time, elected in May 2009, by the Commune/Sangkat Councilors. These councils have a mandate for 5 years.

**DIW:** District Integration Workshops are held between July and October, to bring Commune/Sangkat Councils, looking for support for their projects, together with the governmental and non-governmental agencies that may provide support.

**ICC:** Inter Communes Council projects are executed in 10 provinces under the Democratic and Decentralized Local Governance Project (DDLG). This five year project (2006-2010) is executed by Ministry of Interior and funded by the European Commission and UNDP. The project focuses on improving dialogue partnership and accountability; create a network of Commune Councils at the provincial and national level and support and contribute to local area development for poverty reduction. The work under the ICC component supports investments and services formulated through inter-commune dialogue and planning.

**MEDiCAM:** A non-profit and non-partisan membership organization for NGOs active in Cambodia's health sector. It is the primary networking agency for health-related NGOs.

**NCDD:** the National Committee for sub-National Democratic Development is the inter-ministerial body charged with the implementation of the Organic Law (a key legislative document, adopted in 2008, outlining the envisaged decentralization). NCDD also channels substantial financial assistance by a number of Development Partners, to projects and programs at various levels. This amounted to over \$ 91 million in 2008. More information at: [www.ncdd.gov.kh](http://www.ncdd.gov.kh). This website also provides access to reports, manuals, legal documents, details on projects and more.

**OD:** the Operational Districts are the districts as defined and used by the Ministry of Health. These do not coincide with the 193 (Administrative) Districts and Khans, as used by all other RGC agencies. The Operational Districts are usually larger, and so there are 77 Operational Districts against 193 administrative Districts and Khans. However they do fit within the boundaries of administrative provinces.

**PID:** The Project Information Database is the database maintained by NCDD at national and sub national level, to follow all aspects of projects by Commune and Sangkat Councils, including the C/S Fund projects

### **Provincial Investment Fund (PIF)**

The Provincial Investment Fund is allocated to all Provinces and Municipalities according to a population based formula. Part of the fund is earmarked for support to planning activities of the Provincial / Municipal Department of Planning; and to gender mainstreaming activities of the Provincial Department of Women's Affairs. The remaining "un-earmarked PIF" is allocated by PRDC to sectoral technical departments against established criteria and in response to proposals with prioritisation taking into account: priorities formulated by the CS Councils and aggregated by District into District Priority Activities Matrices (DPAM); alignment with national planning and poverty alleviation criteria, complementarity with other planned activities; and performance of the Department concerned in implementation of activities in previous years. With this provisional allocation, the Department then programs activities through the District Integration Process. Finally, the agreed activities, plus support costs amounting to no more than 25% of the total, are included in a sub-contract signed between PRDC and the Department, pursuant to the overall PSDD contract signed between NCDD and PRDC. Total budget has been around \$ 2 million per year.

**Province:** the 23 Provinces and Phnom Penh Capital City represent the 2<sup>nd</sup> layer of government. They vary in size, from very small, like Kep (approx. 36,000 people) and Pailin (approx. 70,000 people), or large but with small populations, like Mondulkiri (over 60,000 people), and Ratanakiri (over 153,000) to densely populated and large, like Kampong Cham (over 1.7 million people) and Kandal (approx. 1.4 Million people).

**PSDD:** the Project to Support Democratic Development through Decentralization and Deconcentration is funded by DFID (UK), SIDA (Sweden) and UNDP and runs from 2006 till the end of 2010 (including a one year extension). Annual budgets range from \$ 11 million to over \$ 18 million. The project provides core technical support to NCDD and to the provinces, financial support to the C/S Fund, District Initiative, Provincial Investment Fund and capacity building support through training, studies and advisory services.

**RILGP:** The Rural Investment and Local Governance Project is a World Bank funded project that provides substantial support to C/S Fund projects and to developing the required infrastructure, policies, systems and skills. It started in 2003 with a Loan for \$ 22 million for 2003-2007 and was then extended with a Grant of \$ 36 million for the period of 2007-2010. Discussions about a possible RILGP 2 are taking place between RGC and the World Bank.

**RPRP:** the Rural Poverty Reduction Project is a seven year project from 2004 till 2010, funded by IFAD and UNDP and implemented through the Ministry of Agriculture, Forestry and Fishery, supported by the Ministry of Interior and facilitated by NCDD. The project is active in the provinces Prey Veng and Svay Rieng and focuses on 120,600 households below poverty line. The objective is poverty reduction with the active participation of the poor through improved livelihoods, Strengthened capacity, Sustainable farming systems and natural resource management, new and/or rehabilitated infrastructure development, increase accessibly to technology, services and markets for their economic and social development.

**RULIP:** the Rural Livelihoods Improvement Project is implemented by the Ministry of Agriculture Forestry and Fisheries (MAFF)' Project Support Unit- PSU, with the NCDD playing the role of cooperating agency. Funded by IFAD and UNDP, the project will run till 2014. The target group consists of poor households who have little or even no land, few livestock or other assets and often many dependents. The main goal of the project is to directly or indirectly improve the livelihood systems, food security and incomes of a total of 33,900 rural poor, ethnic minority and female headed households in targeted village of Kratie, Preah Vihear and Ratanakiri provinces in a sustainable manner.

**Seth Koma:** The UNICEF funded Seth Koma program focuses on measurable action for children and women. During 2006 -2010 it is implemented in six provinces. Government and UNICEF pursue a set of inter-related goals, addressing critical stages of the life cycle of the child: a) Mothers have safe pregnancies and deliveries and healthy newborns; b) best possible start in life of infant; c) Children enter schools at the right age of six years; d) Children are protected from exploitation, abuse, violence, discrimination and other risks; and e) Youth and adolescents acquire life skills, express their views, participate in the decisions.

## **Preface**

The Government of Cambodia attaches great importance to optimal use of scarce resources and to participatory planning and management at all levels. The Organic Law which was adopted in 2008 provides the legal context for further steps towards improving and decentralizing planning, management and monitoring, and towards greater accountability and transparency of institutions at sub-national levels.

The Government has established elected Councils at the sub-national levels, and we will progressively give them the responsibilities, together with the human and financial resources, to deliver a wide range of public services. They will be more democratic, more efficient, more transparent and accountable, better at addressing gender and other inequalities, and at fighting corruption. We recognize that development does not come from government alone; it needs the involvement of citizens, civil society and the private sector, and the new system will facilitate this.

A central element in this process is the availability of information on any aspect of development to all concerned parties. The newly elected Councillors at District and Khan level, line departments operating at these levels, but also NGOs, Development Partners, Commune Councillors and citizens throughout Cambodia need information on problems and requirements, resources and opportunities, services and agencies, plans and projects. They will need such information to better understand the present situation, set targets for the future, monitor progress, know what others are doing and to apply resources wisely and this is the reason the District Data books will be so valuable.

The District Data Books are a major step towards full transparency and towards informed planning and decision-making. They provide all available data at District, Khan, Commune and Sangkat level in easily accessible formats, in Khmer and English, through over 16,000 printed copies, CD-ROMs and the NCDD website.

This is the first time in Cambodia (and possibly in South East Asia) that such detailed information is made so widely available and NCDD should be commended for the hard work that has gone into this. We also thank the Ministry of Planning, which provided the detailed data of the Commune Data Base, the sectoral ministries and provincial authorities who contributed data and the Development Partners who provided financial support.

It is our sincere hope that the publication of the District Data Books will strengthen capacities, especially at district levels, for evidence-based development planning. We also hope that this information will deepen the understanding among Ministries, Provincial Authorities, Development Partners, NGOs and research agencies of the realities at commune and district levels.

We call upon all to use and distribute this information, complement or correct where appropriate and to contribute new data in the years to come.

**Sar KHENG**

Deputy Prime Minister, Minister of Interior and Chairman of NCDD

# Introduction

## Purpose

The purpose of the District Data Books is to bring together information on any aspect of life and development of Districts, Khans, Communes and Sangkat, together and make this widely available. The primary targets are the newly elected District Councilors, district level line departments, provincial agencies, Development Partners and NGOs operating at this level. They need detailed knowledge on current living conditions, natural resources, infrastructure, agriculture and other economic activities, current service levels, past and planned projects and available resources.

While much information exists on many of the above aspects, it is often hard to access that information and much is lost to reports, databases and statistics that are not widely shared. Data are often only available in one language and often out-of-date, and many reports cover only one sector or region.

We found that these problems are especially acute at the district level. Now that Districts are becoming a much more significant level of local government and development planning, there is an urgent need for wide-ranging data to be used for setting base-lines, planning and prioritizing, monitoring and learning.

## Approach

We have attempted to identify and compile all available statistics, reports, maps and other data at district and/or commune level. From this we have selected information that is available for all or most districts, reasonably reliable and up-to-date, sufficiently detailed and of possible interest to development planners, decision makers, agencies and citizens.

The major sources of the information in these District Data Books are:

- a) The Commune Data Base information over the years 2006 to 2009 (the most recent data were collected late last 2008), as compiled by the Ministry of Planning
- b) Detailed information directly collected from the Ministry of Health, the Ministry of Education, Youth and Sports and (for maps) the Ministry of Land Management, Urban Planning and Construction
- c) The Project Information Database (PID) at NCDD (up-to-date)
- d) The Commune Development and Planning Database (CDPD) (up to date)
- e) The District Information System (DIS) (updated per Mid 2009)
- f) Direct data collection at provincial and district level on private sector, irrigation, roads, and electricity, through provincial agencies
- g) Medical data collected from MEDiCAM
- h) The ID Poor Project – for poverty data on a number of provinces and districts
- i) NCDD's work on predictive poverty rates
- j) Specific projects for outputs, plans and budgets (Seth Koma, RILGP, RPRP and ICC)

## Limitations of the data

We are fully aware that the data we collected are not always complete, consistent or correct. While we have rejected information that was wrong or very incomplete, we decided not to aim for statistical and scientific perfection, but to include information that is useful, relevant

and comprehensive. We also accepted different sources for the same data as this may encourage discussion on the quality of the respective data.

We strongly encourage anyone who notes errors or incompleteness in these data to contact us and to share their data. We hope that the next round of producing such District Data Books can draw on wider sources and more complete data.

We encourage the District Administrations, who receive these data also in digital format, not only to use these for their planning and monitoring, but also to start correcting and updating these data and to share new data with NCDD for future use.

## Contents

The information in the following pages is organized in five sections:

- a) **Geographical data:** this section provides maps on infrastructure and administration and on land use and natural resources management. These maps are also provided in large format to all Districts and Khans.
- b) **District Profile:** this presents wide ranging data, covering 2006 – 2009, at district and commune level, extracted from the Commune Data Base, but edited for better understanding.
- c) **Plans and Projects:** this section presents development priorities determined by Commune and Sangkat Councils, Temporary Agreements, outputs and expenditure of major projects at Commune and District level over 2006 – 2008 and plans and budgets for 2009.
- d) **Services and Organizations:** this section provides details on key infrastructure (roads, electricity, irrigation systems) and services in health and education at district and commune level. It also provides an inventory of resources at the District Administration, NGOs operating in the district and private sector agencies active in the district.
- e) **Poverty Data:** this section provides predicted poverty rates for 2009 for all districts and communes and detailed poverty data compiled and processed by the ID Poor project for those that have been covered by this project.

## The future

It is our hope that this is the start of a longer-term process. We hope that a next edition of these District Data Books will offer more comprehensive, correct and up-to-date information. We hope that the District Administrations will not only start using this information, but also improve and update it. For this they are all provided with the full data set in digital format.

We invite agencies, projects and experts to send reports, statistics and maps that could be used for a next version to us and we invite all users of the District Data Books to inform us about errors, updates and inconsistencies. Please contact us through [info@ncdd.gov.kh](mailto:info@ncdd.gov.kh)

We now invite you to browse through this data book. You may open this randomly or use the table of contents and go to the aspects that have your special interest.

We hope that you will be informed, surprised and assisted. We hope, above all, that this information will lead to a deeper understanding of causes and effects of poverty, to purposeful decisions on how to tackle those causes and to greater transparency in using scarce resources for the benefit of all.

Martin de Graaf  
Program Advisor, PSDD/NCD



## **SECTION A: GEOGRAPHY**



# **1 Administration and Infrastructure**

Please see separate folder containing A3 maps.



## **2 Land Use and Natural Resources**

Please see separate folder containing A3 maps.



### 3 Geography

#### 3.1 Land Area

Total Land Area (ha)	Forest Land Area (ha)		Cultivation Land Area (ha)	Construction Land Area (ha)	Other Land Area (ha)
	Total	Flooded Forest Area			
51900	9100	0	36396	450	5954

#### 3.2 Distances between Offices

Location	Distance (Km)
From District Office to C/S Office of Sampov Lun	7
From District Office to C/S Office of Angkor Ban	9
From District Office to C/S Office of Ta Sda	1
From District Office to C/S Office of Santepheap	1
From District Office to C/S Office of Serei Mean Chey	6
From District Office to C/S Office of Chrey Seima	11





## **SECTION B: DISTRICT PROFILE<sup>1</sup>**

---

<sup>1</sup> All data in this section come from the Commune Database (CDB) unless otherwise specified. These include primarily new CDB data, collected late 2008, and some data from earlier years. Please note that percentages are rounded to the nearest whole number.



# 1 General Information

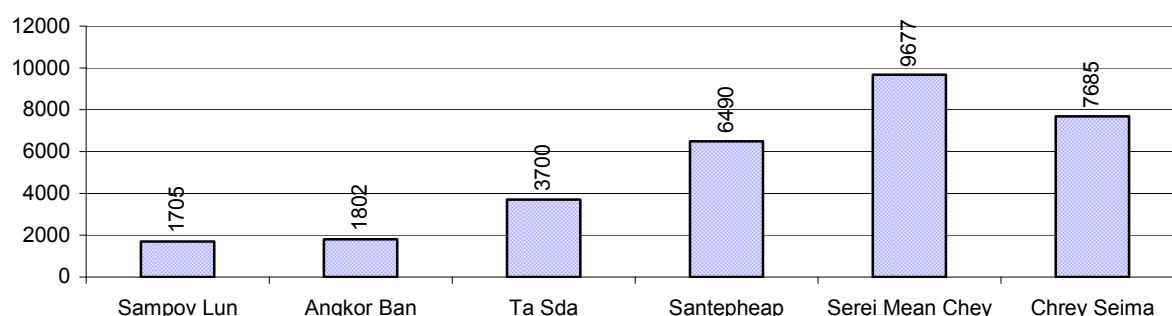
## 1.1 Population of the District

### 1.1.1 Total Population

Number of families	2005	2006	2007	2008
Total number of families	4,008 families	4,234 families	4,319 families	6,367 families
Increase (+)/Decrease (-) in nr of families		6%	2%	47%
Total population	19,173 pers	20,651 pers	21,397 pers	31,059 pers
Increase (+)/Decrease (-) in nr of people		8%	4%	45%
Number of female Headed Households (HH)	455 families	460 families	496 families	674 families

**Note:** Percentages of population and increase/decrease are calculated on basis of the previous year. A negative sign in front of the percentage indicates a decrease in population.

### 1.1.2 Population, by Commune, in 2008



### 1.1.3 Population, by Age Group, over 3 years

Population by age group	2006	2007	2008	
	%	%	%	Number
<b>Age 0-5 years (as percentage of the population)</b>	14%	13%	12%	3,835 persons
Male 0-5 yrs	48%	49%	50%	1,905 persons
Female 0-5 yrs	52%	51%	50%	1,930 persons
<b>Age 6-17 (as percentage of the population)</b>	34%	34%	31%	9,666 persons
Male 6-17 yrs	51%	51%	48%	4,687 persons
Female 6-17 yrs	49%	49%	52%	4,979 persons
<b>Age 18-60 (as percentage of the population)</b>	50%	51%	54%	16,796 persons
Male 18-60 yrs	49%	49%	50%	8,345 persons
Female 18-60 yrs	51%	51%	50%	8,451 persons
<b>Age 61 above (as percentage of the population)</b>	2%	2%	2%	762 persons
Male 61	45%	47%	47%	357 persons
Female 61	55%	53%	53%	405 persons

**Note:** The overall percentage for each age group is calculated on the basis of the total population. The gender distribution of each group is calculated on the basis of the population within that particular age group.

## 1.2 Occupations

### 1.2.1 Percentage of families with a particular Occupation over 3 years

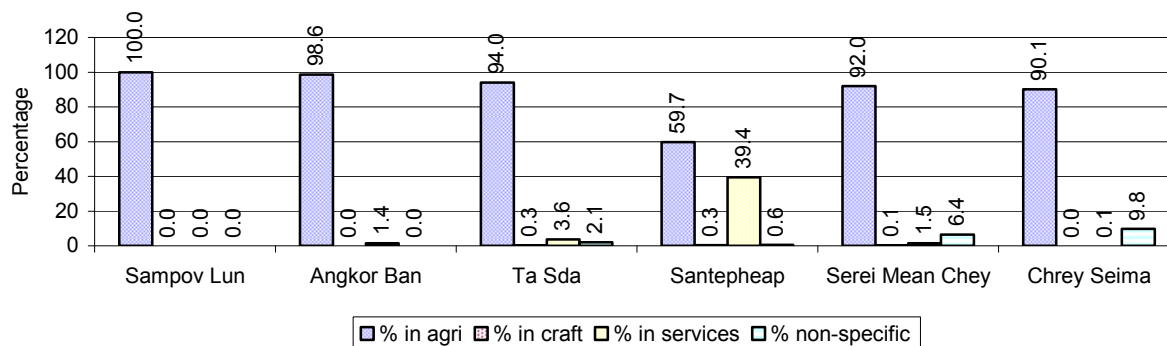
*This table shows the percentage of the population who have a particular occupation (job), for example the percentage of the population in the district who are rice farmers, furniture crafter, trader, etc.*

Description	2006	2007	2008	
	%	%	%	Number
<b>Families whose main occupation is agriculture</b>	85%	82%	85%	5,432 Families
Families whose primary occupation is rice farming	0%	0%	23%	1,440 Families
Families whose primary occupation is cultivating long-term crops	0%	0%	0%	15 Families
Families whose primary occupation is cultivating short-term crops	84%	81%	62%	3,962 Families
Families whose primary occupation is cultivating vegetable	0%	0%	0%	12 Families
Families whose primary occupation is fisherman	0%	0%	0%	0 Families
Families whose primary occupation is livestock farmer	0%	0%	0%	3 Families
Families whose primary occupation is NTFP collection	0%	0%	0%	0 Families
<b>Families whose main occupation is craft work</b>	0%	0%	0%	9 Families
Families, whose main occupation is in furniture craft, wooden, rattan, vine, bamboo	0%	0%	0%	7 Families
Families whose main occupation is in metal, aluminum, glass goods production	0%	0%	0%	2 Families
Families whose main occupation is food production	0%	0%	0%	0 Families
Families whose main occupation is tire, plastics and rubber goods production	0%	0%	0%	0 Families
Families whose main occupation is textile, clothing goods production	0%	0%	0%	0 Families
Families whose main occupation is in other production, not listed above	0%	0%	0%	0 Families
<b>Families whose main occupation is services</b>	6%	6%	10%	634 Families
Families whose main occupation is trade	4%	4%	3%	180 Families
Families whose main occupation is repair	1%	1%	1%	53 Families
Families whose main occupation is providing transport services	0%	0%	0%	25 Families
Families whose main occupation is providing other services	0%	0%	6%	376 Families
Families whose main occupation is not clear (or multi)	9%	12%	5%	292 Families

**Note:** The occupation percentages are calculated on the basis of the total number of families.

### 1.2.2 Percentage Families that work in one of four occupational sectors, by Commune in 2008

This table indicates the percentage of families involved in one of four occupation types: agriculture, craft, services or non-specific (other). Please note agriculture includes forestry activities such as cutting down trees and gathering gum from the trees.



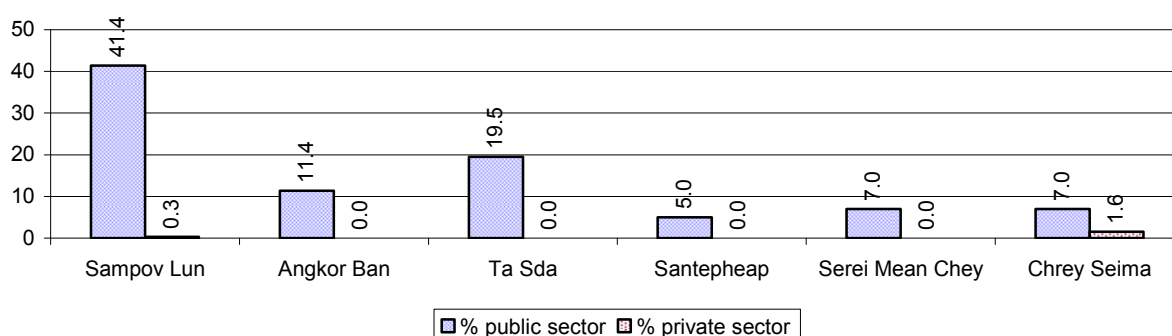
**Note:** Calculated on the basis of the total number of families within a commune.

### 1.2.3 Percentage of Families with public Sector, private Sector or uncertain Jobs, over 3 years

Description	2006	2007	2008	
	%	%	%	Number
Families that have a family member who is a government official, staff or worker	16%	15%	10%	654 families
Families that have a family member who is a private sector staff or worker	0%	0%	0%	23 families
Number of people aged 18-60 with uncertain/irregular jobs	8%	10%	6%	1,030 persons

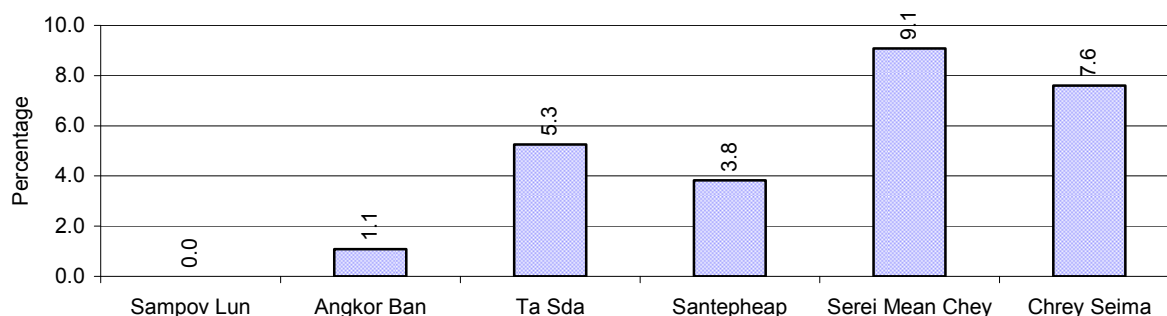
**Note:** In the first two rows percentages are calculated on the basis of the total number of families. In the third row the percentage is calculated on the basis of the total number of people aged 18-60 years.

### 1.2.4 Percentage of Families with public or private Sector Jobs, by Commune in 2008



**Note:** Calculated on the basis of the total number of families in the commune

### 1.2.5 Percentage of People aged 18-60 years with uncertain/irregular Jobs, by Commune, in 2008.



## 1.3 Property

### 1.3.1 Housing types and facilities over 3 years

This table shows the percentage of people living in a certain type of house. It also indicates how many houses have electricity or battery powered lights and how many have TV.

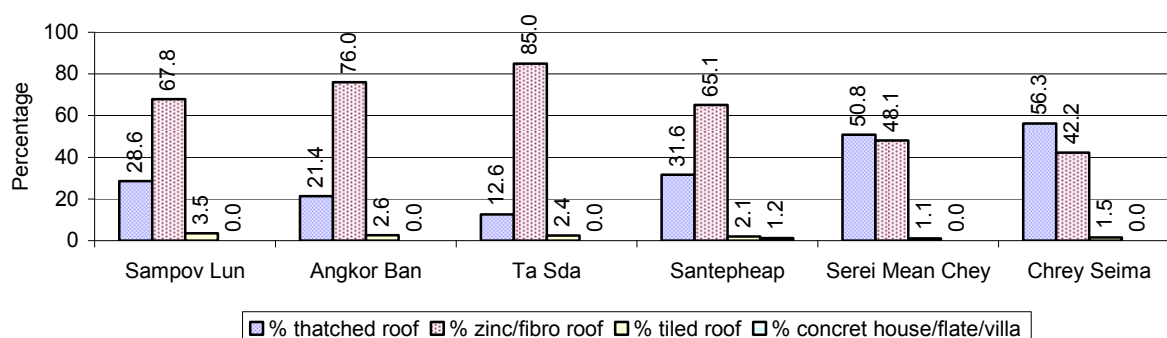
House Type	2006 %	2007 %	2008	
			%	Number
House with thatched roof	26 %	25 %	40 %	2,462 houses
House with zinc/fibro roof	72 %	73 %	58 %	3,523 houses
House with tiled roof	2 %	2 %	2 %	109 houses
Flats/apartments (with many families living)	0 %	0 %	0 %	0 houses
Concrete house or flat (with one family living)	0 %	0 %	0 %	18 houses
Villa house	0 %	0 %	0 %	0 houses
Houses with electricity	51 %	55 %	44 %	2,688 houses
Houses with battery light	15 %	17 %	22 %	1,332 houses
Houses with TV	44 %	46 %	44 %	2,668 houses

**Note:** Calculated against the total number of houses

### 1.3.2 Families living on public Land or without a permanent House

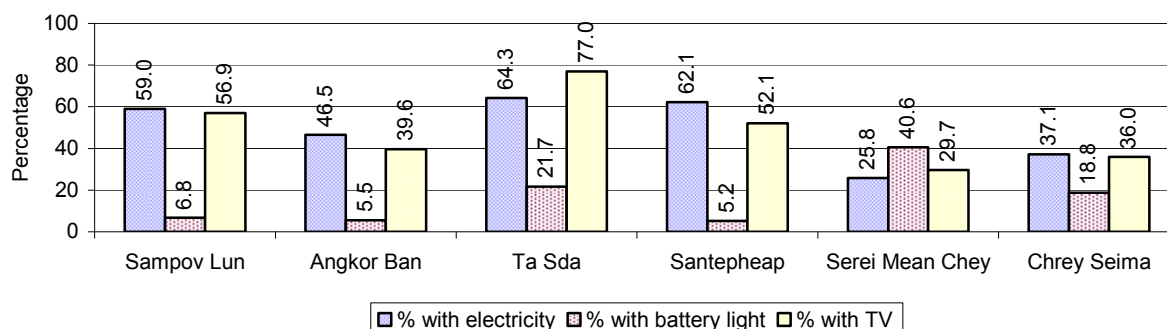
Living situation	2006	2007	2008
Families living in a house on public land	5 families	7 families	11 families
People, without permanent housing	8 person(s)	12 person(s)	33 person(s)

### 1.3.3 Percentage of Population living in a particular type of House, by Commune, in 2008



**Note:** Calculated against the total number of houses in each commune

### 1.3.4 Percentage of Houses with Electricity, Battery Lights and/or TVs, by Commune, in 2008



**Note:** Calculated against the total number of houses in each commune

### 1.3.5 Types of Vehicles and their ratio to Families across 3 years

This table shows the number of families per vehicle in the district. The last column shows the total number of each type of vehicle in the district for 2008.

Description	2006 ratio	2007 ratio	2008	
			Ratio	Number
Bicycle and bicycle with trailer	8	8	10	652
Ox-carts and horse-carts	60	47	53	121
Motorbike/with trailer	4	3	3	2,050
Motor tri-cycle	169	180	303	21
Large Transportation				
<b>Total number of cars/trucks</b>	19	17	20	324
Locally made vehicles	137	117	116	55
Trucks for goods transport	68	64	77	83
Buses/mini buses for passengers	N/A	N/A	318	20
Family cars	33	29	38	166
Agriculture machinery				
Tractors used for plowing	15	14	16	406
Power-tillage used for plowing	98	100	49	130
Other type of machinery				
Other type of machinery	N/A	N/A	N/A	0
Water transportation				
Row boats	N/A	N/A	N/A	0
<b>Total number of motor boats</b>	N/A	N/A	N/A	0
Motor boats used for fishing	N/A	N/A	N/A	0
Motor boats used for passengers	N/A	N/A	N/A	0
Motor boats used for goods transporting	N/A	N/A	N/A	0

**Note:** Ratio of families to a particular type of vehicle is the result of the total number of families divided by total number of that type of vehicle. Other types of vehicles, such as bulldozer, excavator, rollers etc. are not listed.

## 2 Infrastructure and Economy

### 2.1 Roads in meters over 3 years

Description	2006	2007	2008
Bituminous road	0 m	0 m	0 m
DBST, Macadam road	0 m	0 m	0 m
Concrete road	0 m	0 m	0 m
Laterite road	68,048 m	72,197 m	79,179 m
Constructed earth road	4,500 m	8,000 m	8,000 m
Un-constructed earth road	760 m	2,360 m	2,307 m

### 2.2 Sewerage Pipes in meters over 3 years

Description	Sewage pipe length		
	2006	2007	2008
Total length of sewage pipe, diameter 30-50 cm	0 m	0 m	0 m
Length of newly constructed sewage pipe, diameter 30-50 cm	0 m	0 m	0 m
Length of sewage pipe, diameter 30-50 cm needs repair/rehabilitation	0 m	0 m	0 m
Total length of sewage pipe, diameter of pipe 60-100 cm	0 m	0 m	0 m
Length of newly constructed sewage pipe, diameter 60-100 cm	20 m	20 m	0 m
Length of sewage pipe, diameter 60-100 cm needs repair/rehabilitation	0 m	0 m	0 m
Sewage pipe, diameter of pipe over 100 cm	0 m	0 m	0 m
Length of newly constructed sewage pipe, diameter over 100 cm	0 m	0 m	0 m
Length of sewage pipe, diameter over 100 cm needs repair/rehabilitation	0 m	0 m	0 m

### 2.3 Drainage and Bridges

Construction Type	2006		2007		2008	
	place(s)	Length	place(s)	Length	place(s)	Length
Single pipe culvert	92	445m	98	326 m	89	367 m
Double-pipe culvert	18	79m	31	173 m	34	224 m
Box pipe culvert	1	0m	0	0m	0	0 m
Wooden bridge	14	0m	2	8m	2	8 m
Concrete bridge	0	0m	0	0m	4	0 m
Bale bridge	0	0m	0	0m	0	0 m
Spillway construction	0	0m	0	0m	0	0 m

### 2.4 Services in the District

Descriptions	Number of places by year		
	2006	2007	2008
<b>Public</b>			
Electricity generating stations	2	0	0
Health clinics	0	0	0
<b>Private</b>			
Bicycle and motorcycle repair places	29	57	61
Agricultural machinery, tools and equipment repair places	13	15	15
Electronic tool repair places	5	16	16
Battery-charging services	11	8	17
Handicraft places, wooden furniture and forest by-products	0	7	9
Other handicraft places (excluding furniture)	1	0	0
Small-scale services (hairstylist, phone service, massage,	42	46	56



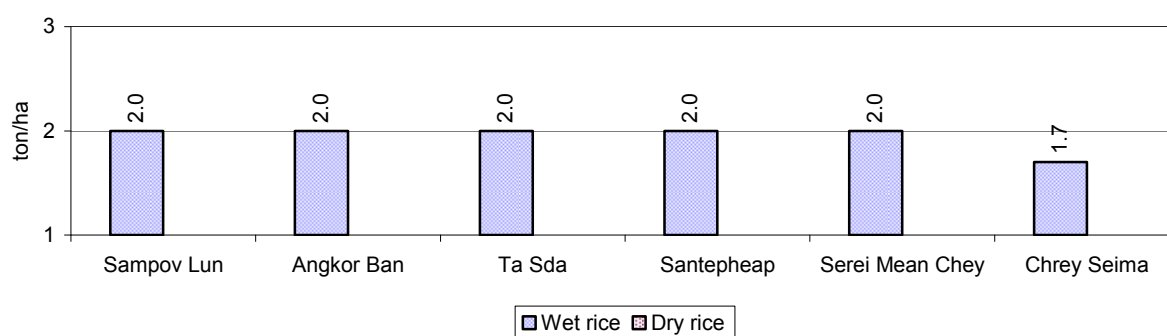
Descriptions	Number of places by year		
	2006	2007	2008
Karaoke, etc)			
Small-scale food shop businesses (Food, groceries, drink shop, etc)	7	30	38
Small-scale rice mills	9	8	9
Medium or large-scale rice mills	0	0	0
Small-scale markets	0	2	3
Large-scale market	2	1	2
Alcohol refinery places	8	3	3
Pharmacies and small drug stores	6	6	10
Hotels	0	0	0
Guest houses	3	3	4
Restaurants	0	2	0
Gasoline stations	8	7	7

## 2.5 Agriculture

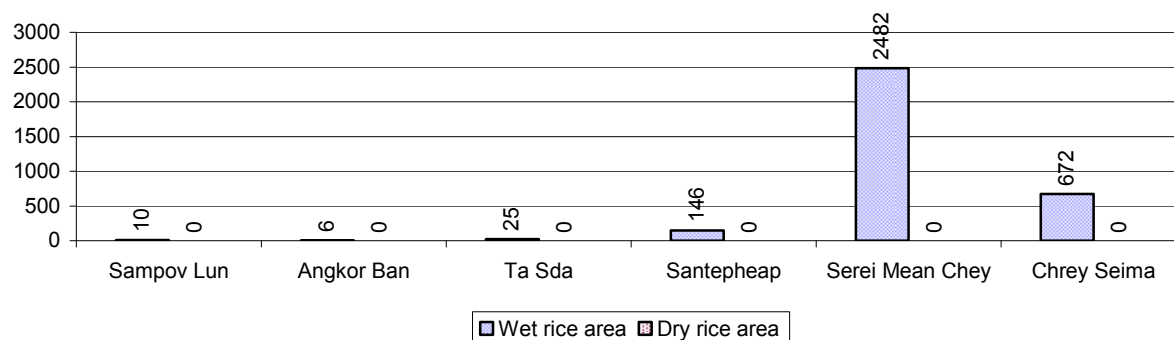
### 2.5.1 Rice cultivation in the District over 3 years

Description	2006	2007	2008
Total dry rice land area	0 ha	0 ha	0 ha
Actual dry rice cultivation area	0 ha	0 ha	0 ha
% actual cultivation to total land	-%	-%	-%
Total dry rice production	- tonne(s)	- tonne(s)	- tonne(s)
Average dry rice yield	- tonne(s)/ha	- tonne(s)/ha	- tonne(s)/ha
Total wet rice land area	42 ha	145 ha	3,363 ha
Actual wet rice cultivation area	35 ha	145 ha	3,341 ha
% actual cultivation to total land	83 %	100%	99%
Total wet rice production	87.50 tonne(s)	362.50 tonne(s)	6,514.95 tonne(s)
Average wet rice yield	2.5 tonne(s)/ha	2.5 tonne(s)/ha	2.0 tonne(s)/ha
Total intensive rice land area	0 ha	0 ha	0 ha
Actual intensive rice cultivation area	- ha	- ha	- ha
Average intensive rice yield	- tonne(s)/ha	- tonne(s)/ha	- tonne(s)/ha
Actual upland rice cultivation area	2 ha	129 ha	0 ha
Total upland rice production	4 tonne(s)	387 tonne(s)	- tonne(s)
Average upland rice yield	2.0 tonne(s)/ha	3.0 tonne(s)/ha	- tonne(s)/ha

### 2.5.2 Estimated wet and dry Season Rice Yield in tonne(s)/Ha, by Commune, in 2008



### 2.5.3 Cultivated wet and dry Season Rice areas in Ha, by Commune, in 2008



### 2.5.4 Estimated intensive Rice Yields in tonnes/Ha, by Commune, for 2008

There were no estimated intensive rice yields in this District in 2008

### 2.5.5 Estimated upland Rice Yield in tonnes/Ha, by Commune, for 2008

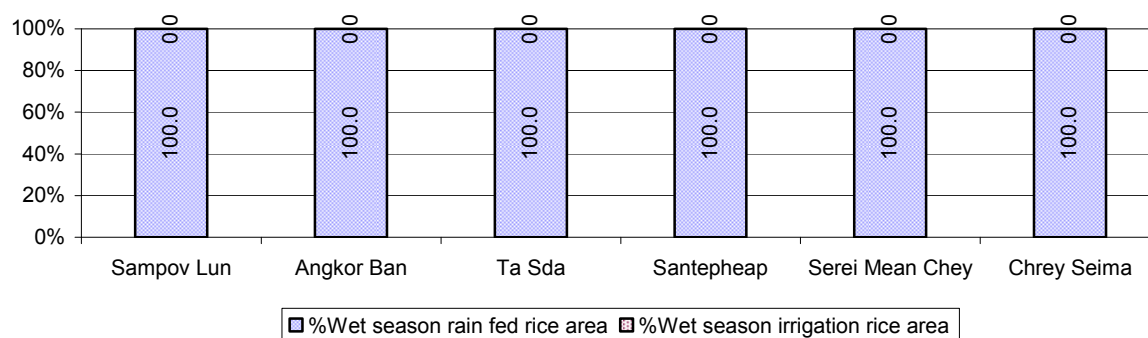
There were no estimated upland rice yields in this District in 2008

### 2.5.6 Wet season Rice irrigation across 3 years

Description		2006	2007	2008	
		%	%	%	Number
Total area of wet season rain fed rice land		100%	100%	100 %	3,341 ha
Percentage of wet season rice land that is irrigated; and for 2008 area in Ha		0 %	0 %	0 %	0 ha
Where	Area irrigated from canal/dam	- %	- %	- %	0 ha
	Area irrigated from river, stream, lake, natural pond	- %	- %	- %	0 ha
	Area irrigated from drilled well	- %	- %	- %	0 ha
	Area irrigated from dug pond	- %	- %	- %	0 ha

### 2.5.7 Water sources for wet Season Rice Cultivation, by Commune, in 2008

This chart shows the percentage of wet season rice cultivation receiving water from rain (natural) and from irrigation.



### 2.5.8 Access to Irrigation

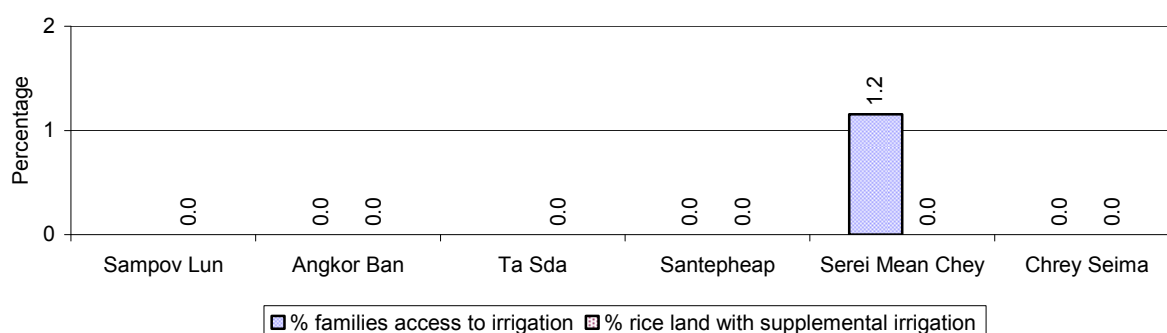
Description	2006 %	2007 %	2008	
			%	Number
Families who have access to irrigation water	-%	-%	1%	11 families
Families who have irrigation wells	-%	-%	0%	0 families

**Note:** Calculated against the total number of families are rice farmers

### 2.5.9 Number of Irrigation Wells over 3 years

Description	2006	2007	2008
Number of irrigation wells	0 wells	0 wells	0 wells

### 2.5.10 Percentage of Families with access to (supplemental) Irrigation for wet Season Rice cultivation, by Commune, in 2008



**Note:** % of families, with access to irrigation is calculated against the total number of families, whose main occupation is rice farming. Irrigated wet rice land area is calculated against the total actual wet rice land cultivated areas

### 2.5.11 Irrigation Wells, by Commune, in 2008

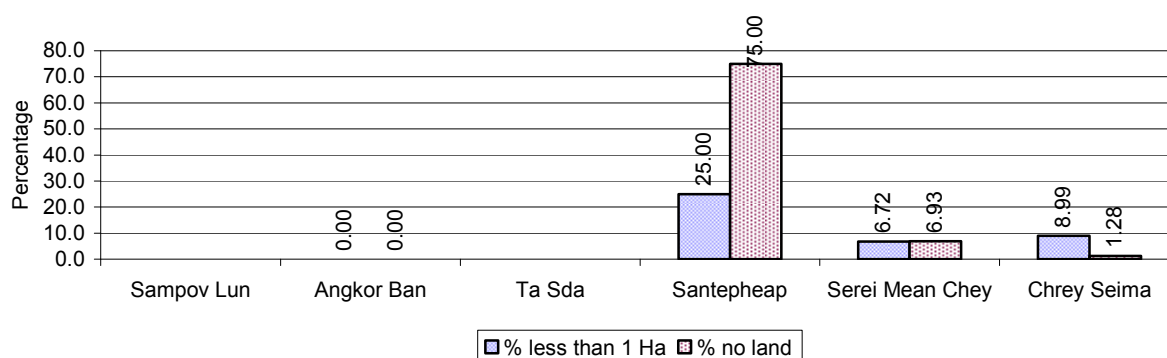
There are no irrigations wells in this District in 2008

### 2.5.12 Farmers owning less than one hectare of Rice Land

Description	2006 %	2007 %	2008	
			%	Number
Families who have less than one hectare of rice land	-%	-%	8%	111 families
Families who do not own any rice land	-%	-%	6%	87 families

**Note:** Calculated on basis of total number of families who are rice farming

### 2.5.13 Percentage of Farmers with less than one Hectare or no Rice Land, by Commune, in 2008

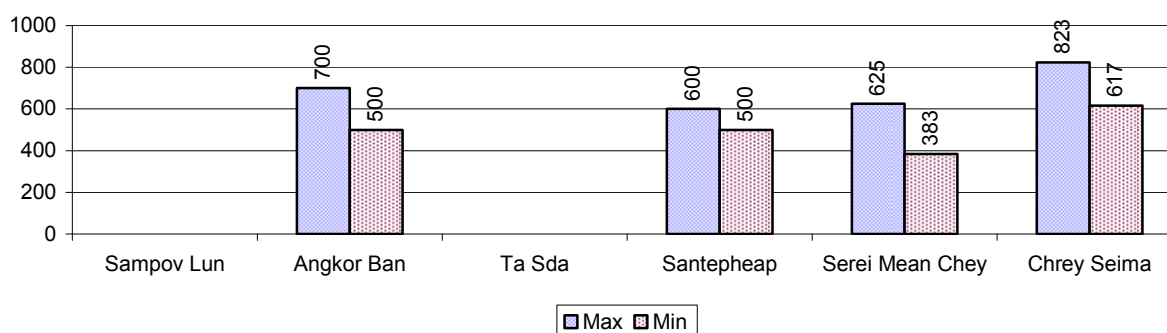


**Note:** Calculated on basis of total number of families who are rice farming

### 2.5.14 Average farm-gate Prices of Rice, over 3 years

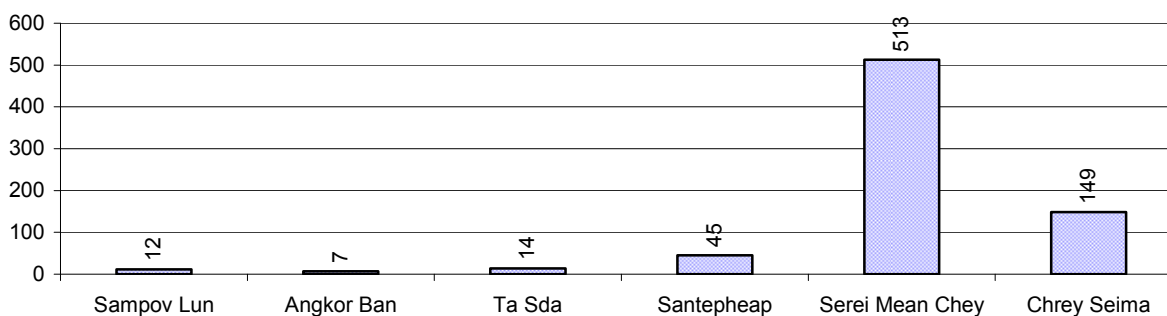
Description	2006	2007	2008
Maximum average farm gate price	604 Riels/Kg	788 Riels/Kg	687 Riels/Kg
Minimum average farm gate price	403 Riels/Kg	588 Riels/Kg	500 Riels/Kg
Average farm gate price	504 Riels/Kg	688 Riels/Kg	594 Riels/Kg
Average rice production per person	4 Kg/person	35 Kg/person	210 Kg/person

### 2.5.15 Minimum and maximum farm-gate Prices of Rice in Riel/kg, by Commune, in 2008



### 2.5.16 Production of Paddy in Kgs/Person, by Commune, in 2008

This table shows how much paddy (harvested rice) is produced in a year in a commune, in kgs per person.

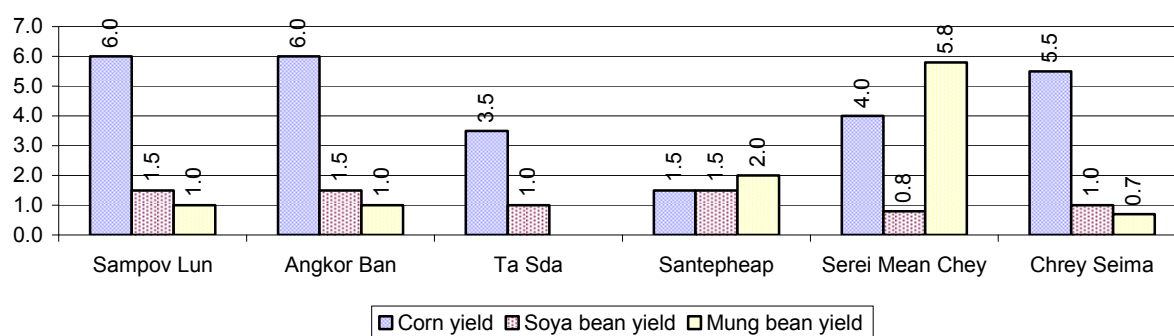


### 2.5.17 Production of other Crops, over 3 years

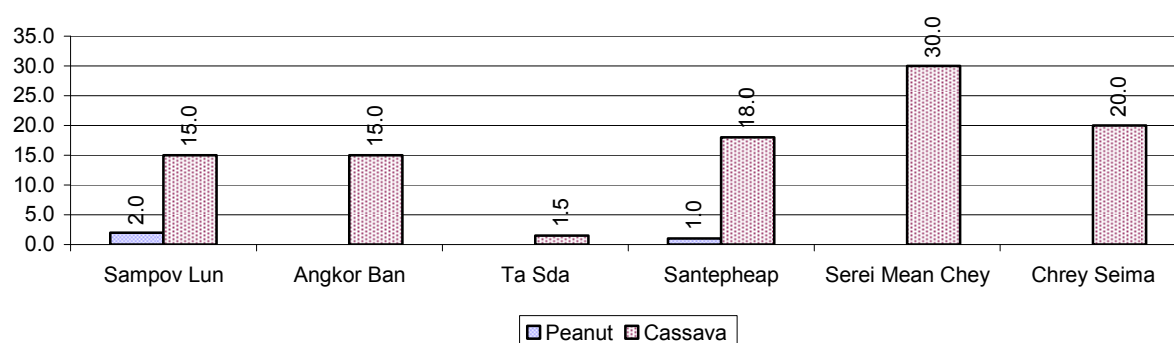
Crops	2006	2007	2008
Corn cultivation area	2,881 ha	4,913 ha	7,184 ha
Estimated corn yield	2.2 tonne(s)/ha	3.5 tonne(s)/ha	4.4 tonne(s)/ha
Estimated corn production	6,194 tonne(s)	17,277 tonne(s)	31,729 tonne(s)
Soya bean cultivation area	5,502 ha	4,339 ha	3,611 ha
Estimated Soya bean yield	1.1 tonne(s)/ha	1.4 tonne(s)/ha	1.2 tonne(s)/ha
Estimated Soya bean production	5,869 tonne(s)	6,144 tonne(s)	4,393 tonne(s)
Mungbean cultivation area	6,066 ha	2,198 ha	862 ha
Estimated Mungbean yield	0.6 tonne(s)/ha	1.1 tonne(s)/ha	2.1 tonne(s)/ha
Estimated Mungbean production	3,872 tonne(s)	2,370 tonne(s)	1,810 tonne(s)

Crops	2006	2007	2008
Peanut cultivation area	14 ha	35 ha	49 ha
Estimated Peanut yield	1.7 tonne(s)/ha	1.0 tonne(s)/ha	1.5 tonne(s)/ha
Estimated Peanut production	23 tonne(s)	35 tonne(s)	74 tonne(s)
Cassava cultivation area	3,109 ha	3,161 ha	3,938 ha
Estimated Cassava yield	5.7 tonne(s)/ha	18.3 tonne(s)/ha	16.6 tonne(s)/ha
Estimated Cassava production	17,618 tonne(s)	57,688 tonne(s)	65,305 tonne(s)
Sweet potatoes cultivation area	0 ha	0 ha	0 ha
Estimated Sweet potatoes yield	- tonne(s)/ha	- tonne(s)/ha	- tonne(s)/ha
Estimated Sweet potatoes production	- tonne(s)	- tonne(s)	- tonne(s)
Sesame cultivation area	162 ha	276 ha	264 ha
Estimated Sesame yield	1.1 tonne(s)/ha	2.0 tonne(s)/ha	1.0 tonne(s)/ha
Estimated Sesame production	170 tonne(s)	552 tonne(s)	264 tonne(s)

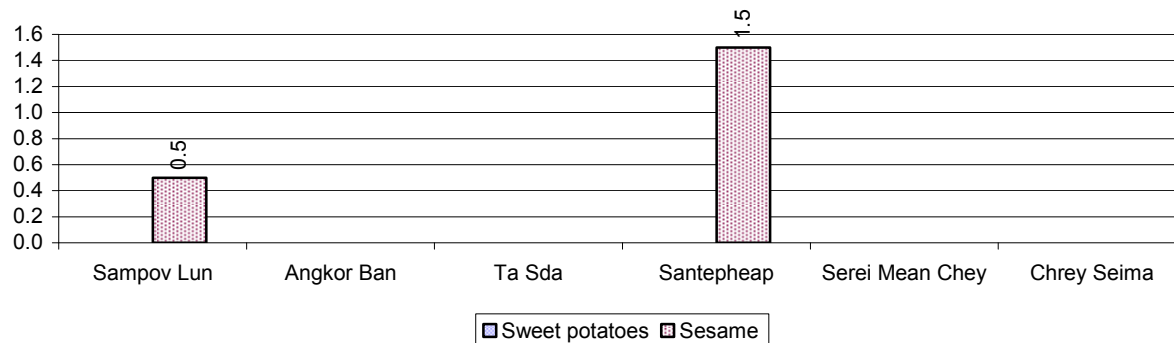
### 2.5.18 Yields of Corn, Soya beans and Mungbeans in tonne(s)/ha, by Commune, in 2008



### 2.5.19 Yields of Peanuts and Cassava in tonne(s)/ha by Commune, in 2008



### 2.5.20 Yields of Sweet Potatoes and Sesame in tonne(s)/ha, by Commune, in 2008



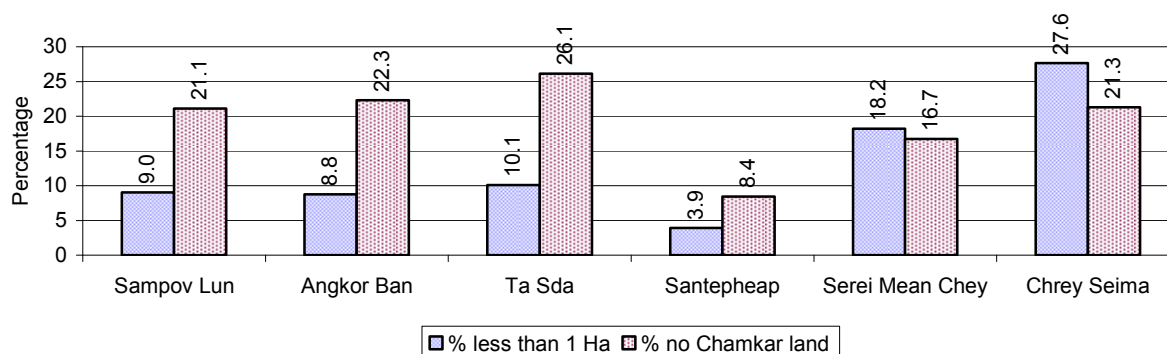
### 2.5.21 Percentage Farmers who own less than 1 Ha or no Chamkar land

Description	2006	2007	2008	
	%	%	%	Number
Families, who own less than 1ha of Chamkar land	10%	13%	14%	556 families
Families, with no Chamkar land	15%	18%	19%	738 families

**Note 1:** Calculated as a percentage of the total number of families whose main occupation is Chamkar (not rice) farming

**Note 2:** Chamkar land is no-rice land, i.e. other crops

### 2.5.22 Percentage Farmers owning less than 1 ha or no Chamkar land, by Commune, in 2008



**Note:** Percentage is calculated among families, who Chamkar farm as a main occupation, not the total population of the commune.

### 2.5.23 Percentage of Families raising Cattle/Buffalo, over 3 years

Description	2006	2007	2008	
	%	%	%	Number
Families raising cattle/buffalo	9%	10%	9%	551 families
Families raising cattle/buffalo as labor forces	2%	2%	2%	120 families

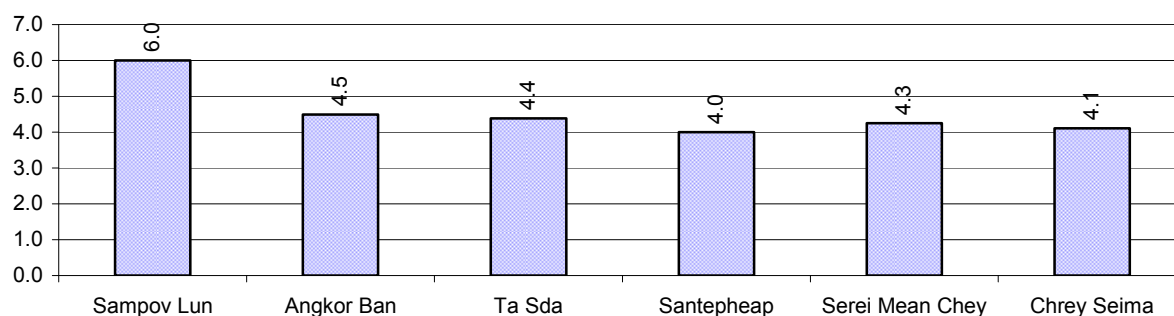
**Note:** Calculated against the total number of families.

### 2.5.24 Number of Cattle/buffalo being raised, over 3 years

Description	2006	2007	2008
Total number of cattle/buffalo	1,760 head(s)	2,083 head(s)	2,367 head(s)
Average cattle/buffalo per families	4.7 head(s)/families	4.7 head(s)/families	4 head(s)/families

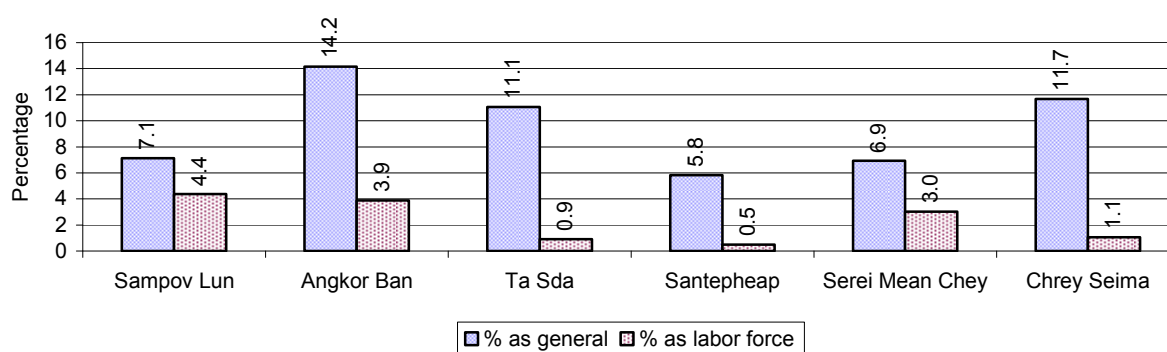
**Note:** Calculated by dividing total number of cattle/buffalo by total number of cattle/buffalo raising families

### 2.5.25 Average number of Cattle/Buffalo per Family, by Commune, in 2008



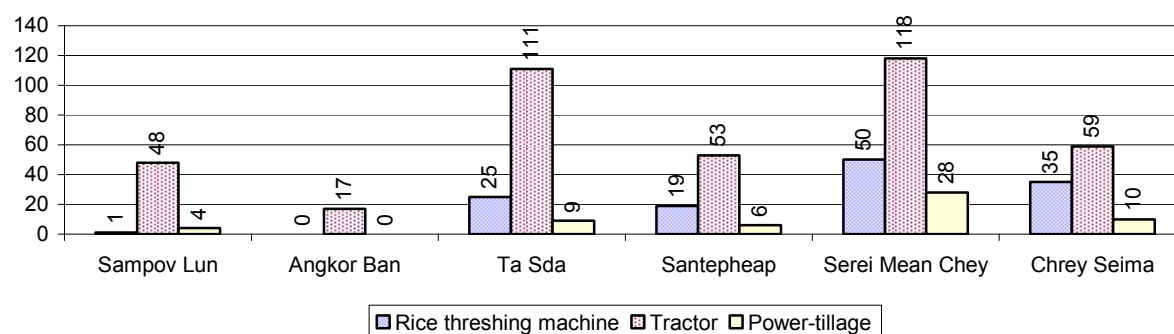
**Note:** Calculated by dividing total number of cattle/buffalo by total number of cattle/buffalo raising families

### 2.5.26 Percentage Families raising Cattle/Buffalo, for general and labor purposes in 2008, by Commune



**Note:** Calculated using the total number of families raising cattle/buffalo against the total number of families.

### 2.5.27 Type and number of agricultural Machines, by Commune, in 2008

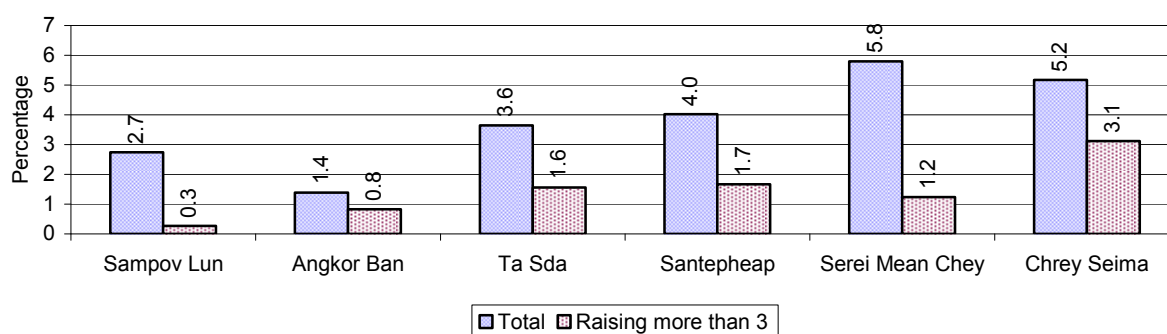


### 2.5.28 Livestock-producing Households over 3 years

Description	2006 %	2007 %	2008	
			%	Number
Total number of families raising pigs	7%	6%	5%	291 families
number of families raising more than 3 pigs	2%	2%	2%	109 families
Total number of families raising chickens	70%	74%	79%	5,005 families
number of families raising more than 3 chickens	53%	60%	62%	3,937 families
Total number of families raising ducks	4%	4%	6%	366 families
number of families raising more than 5 ducks	4%	4%	4%	277 families
Total number of families raising goats or sheep	0%	0%	0%	5 families
Total number of families raising horses	0%	0%	0%	0 families

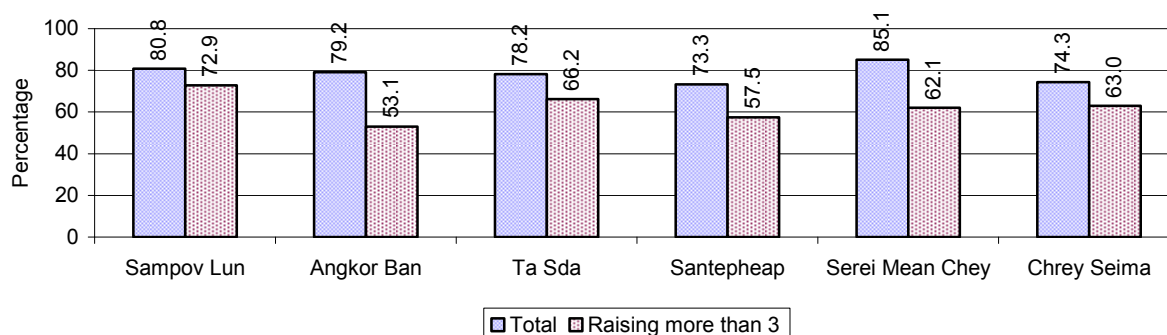
**Note:** Calculated against the total number of families

### 2.5.29 Percentage Families raising Pigs, by Commune, in 2008



**Note:** Calculated against the total number of families in the commune

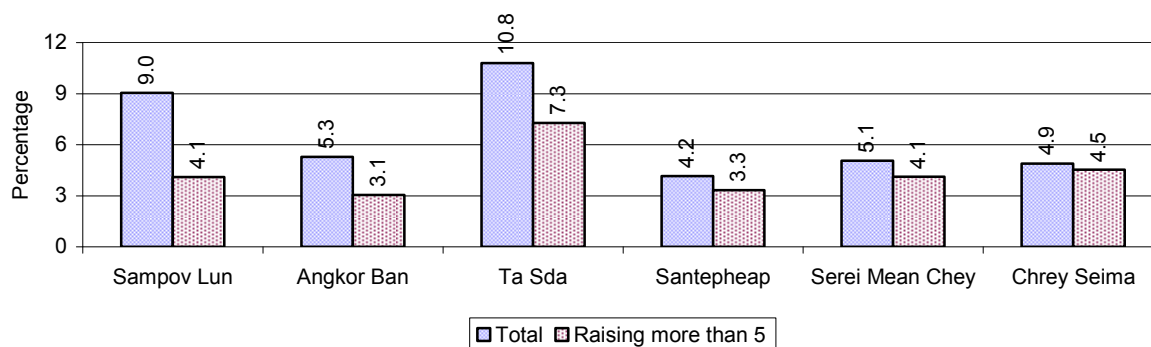
### 2.5.30 Percentage Families raising Chickens, by Commune, in 2008



**Note:** Calculated against the total number of families in the commune

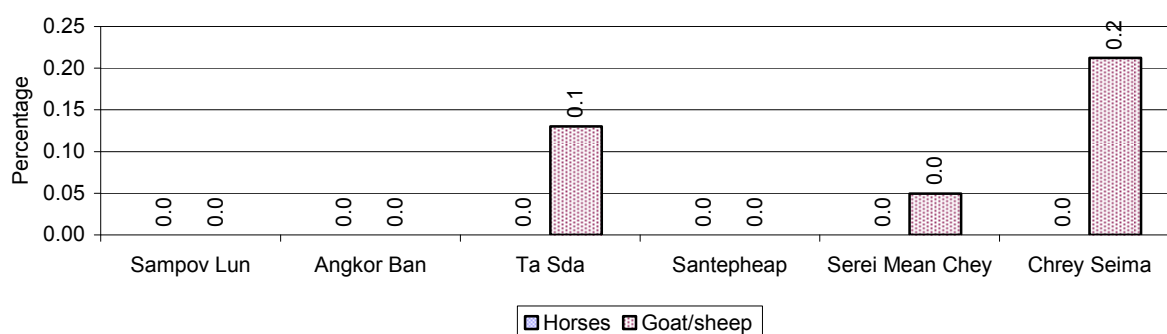


### 2.5.31 Percentage Families raising Ducks, by Commune, in 2008



**Note:** Calculated against the total number of families in the commune

### 2.5.32 Percentage Families raising Horses, Goats or Sheep, by Commune, in 2008



**Note:** Calculated against the total number of families in the commune

### 2.5.33 Livestock Farms over 3 years

Description	2006	2007	2008
Number of cattle/buffalo farms	0 farm(s)	0 farm(s)	0 farm(s)
Number of pig farms	0 farm(s)	0 farm(s)	0 farm(s)
Number of goat/sheep farms	0 farm(s)	0 farm(s)	0 farm(s)
Number of chicken farms	0 farm(s)	0 farm(s)	0 farm(s)
Number of duck farms	0 farm(s)	0 farm(s)	0 farm(s)

### 2.5.34 Number Livestock Farms, by Commune in 2008

There were no farms of this type in this District in 2008

**Note:** Number of farms are recorded by the village chief, not by counting number of livestock in each farm

### 2.5.35 Number Chicken and Duck Farms, by Commune, for 2008

There were no farms of this type in this District in 2008

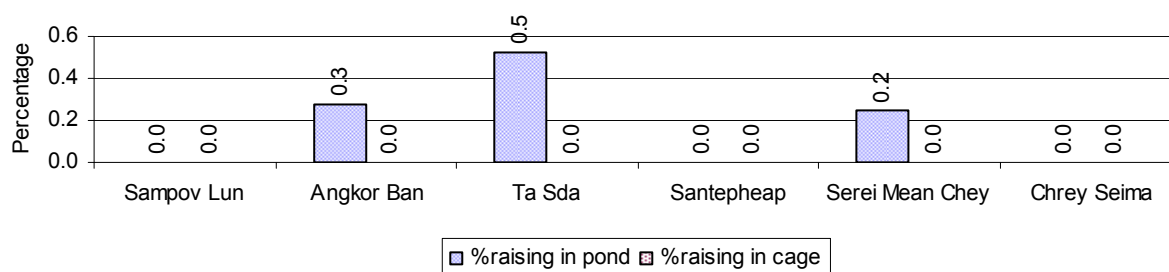
**Note:** Number of farm places recorded by village chief, not by counting number of livestock in each farm

### 2.5.36 Families raising Fish over 3 years

Description	2006	2007	2008
Total number of families raising fish	2 families	7 families	10 families
% families raising fish	0%	0%	0%
Number families raising fish in pond	2 families	7 families	10 families
% families raising fish in pond	0%	0 %	0%
Number fish pond	2 pond(s)	7 pond(s)	10 pond(s)
No. of ponds per family	1.0 pond/families	1.0 pond/families	1.0 pond/families
Number of families raising fish in cage	0 families	0 families	0 families
%families raising fish in cage	0 %	0 %	0%
Number of fish cage	0 cage(s)	0 cage(s)	0 cage(s)
No. of fish cage per family	- cage /families	- cage /families	- cage /families

**Note:** % of families raising fish or fish in ponds or cages is calculated a percentage of the total number of families.

### 2.5.37 Percentage of Families raising Fish, by Commune, in 2008



**Note:** Calculated as a percentage of the total number of families in the commune.

### 2.5.38 Shrimp and Prawn Farming over 3 years

Description	2006	2007	2008
Number of families raising shrimps	0 families	0 families	0 families
% Families raising shrimps	0%	0%	0%
Number of shrimp ponds	0 pond	0 pond	0 pond
Total area raising shrimps	0 ha	0 ha	0 ha
Area per family	-ha/families	-ha/families	-ha/families
Number of families raising prawns	0 families	0 families	0 families
% families raising prawns	0%	0%	0%
Number prawn ponds	0 pond	0 pond	0 pond
Ponds per families	- pond/families	-pond/families	-pond/families
Number of prawn cages	0 cage	0 cage	0 cage
Cages per families	0 cage /families	0 cage /families	0 cage /families

**Note:** Percentage of families raising either prawns or shrimp is calculated against the number of families, who do aquaculture farming, NOT the total population.

### 2.5.39 Numbers of Families raising Shrimps and number of Shrimp Ponds, by Commune, in 2008

There were none of these in this District in 2008

### 2.5.40 Number of Families raising Prawn and Number of Prawn Ponds/Cages, by Commune, in 2008

There were none of these in this District in 2008

### 3 Social Aspects

#### 3.1 Education

##### 3.1.1 Kindergarten in the District over 3 years

Description	2006	2007	2008
Number of community kindergarten schools	0 school(s)	0 school(s)	0 school(s)
Number of community kindergarten class rooms	0 room(s)	0 room(s)	0 room(s)
Number of community kindergarten classes	0 class(es)	0 class(es)	0 class(es)
Number of community kindergarten teachers	0 person(s)	0 person(s)	0 person(s)
Number of women community kindergarten teachers	0 women	0 women	0 women
Number of state and private kindergarten schools	0 school(s)	0 school(s)	0 school(s)
Number of state and private kindergarten class rooms	0 room(s)	0 room(s)	0 room(s)
Number of state and private kindergarten classes	0 class(es)	0 class(es)	0 class(es)
Number of state and private kindergarten teachers	0 person(s)	0 person(s)	0 person(s)
Number of women state and private kindergarten teachers	0 women	0 women	0 women

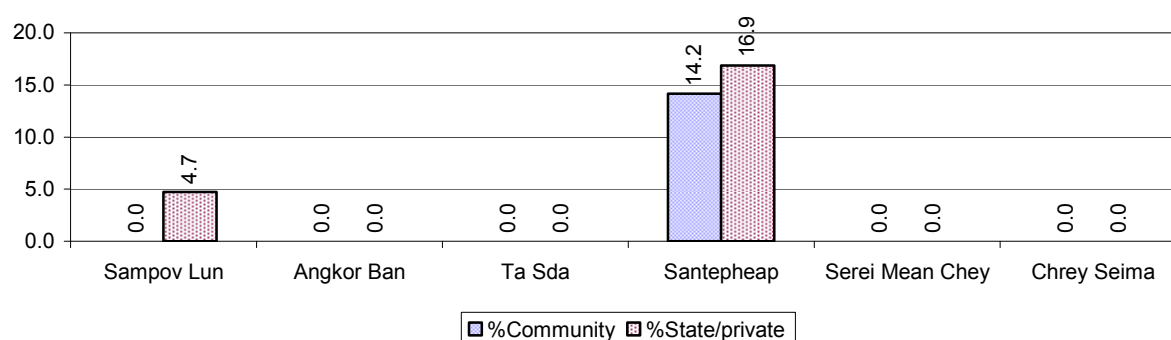
##### 3.1.2 Percentage enrolment at Kindergarten level over 3 years

*This table shows the percentage of the total 3-5 year old population attending kindergarten.*

Description	2006 %	2007 %	2008	
			%	Number
Total percentage of children, 3-5 yrs, go to kindergarten	7%	5%	7%	155 person(s)
Percentage of children, 3-5 yrs, go community kindergarten	0%	0%	3%	68 person(s)
Percentage children, 3-5 yrs, go state/private kindergarten	7%	5%	4%	87 person(s)

**Note:** Calculated against the total for that age group

##### 3.1.3 Percentage of Children 3-5 yrs attending Kindergarten, by Commune, in 2008



##### 3.1.4 Basic Education over 3 years

###### Primary School

Description	2006	2007	2008
Number of primary schools	14 school(s)	14 school(s)	14 school(s)
Number of primary school rooms	77 room(s)	76 room(s)	71 room(s)
Number of primary classes	123 class(es)	117 class(es)	112 class(es)

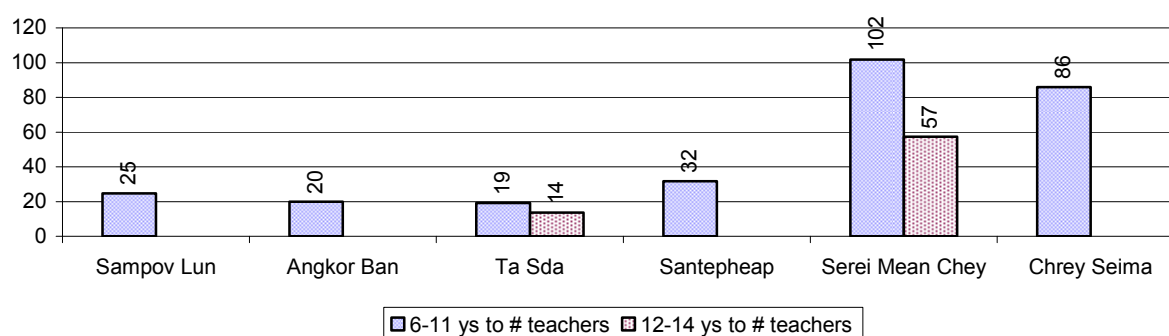
Description	2006	2007	2008
Number of primary teachers	103 person(s)	108 person(s)	103 person(s)
Ratio of children 6-11 yrs to school	240	230	336
Ratio of children 6-11 yrs to school room	44	42	66
Ratio of children 6-11 yrs to class	27	28	42
Ratio of children 6-11 yrs to teacher	33	30	46

**Note:** According to education norm, children 6-11 yrs should attend primary school, while 12-14 yrs should be in lower secondary school, but in reality this varies.

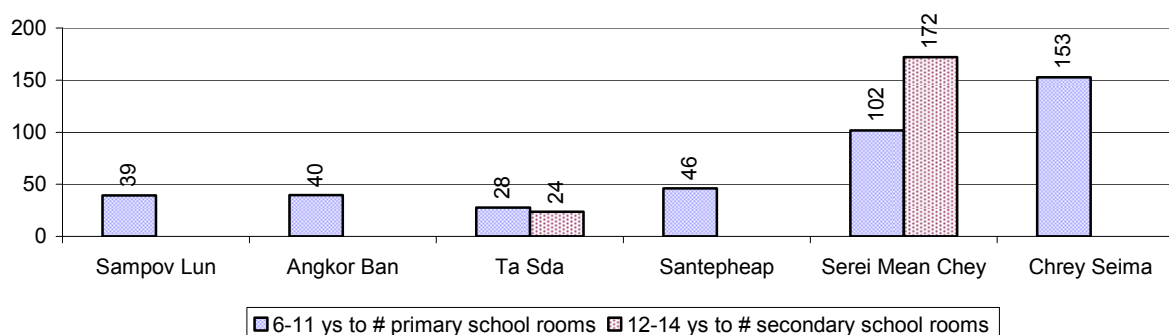
### Lower Secondary School

Description	2006	2007	2008
Number of lower secondary schools	2 school(s)	2 school(s)	3 school(s)
Number of lower secondary school rooms	16 room(s)	16 room(s)	16 room(s)
Number of lower secondary classes	21 class(es)	22 class(es)	23 class(es)
Number of lower secondary teachers	38 person(s)	43 person(s)	34 person(s)
Ratio children 12-14 yrs to school	877	1,023	791
Ratio of children 12-14 yrs to school room	110	128	148
Ratio of children 12-14 yrs to class	84	93	103
Ratio of children 12-14 yrs to teacher	46	48	70

### 3.1.5 Ratio of 6-11 year old and 12-14 year old Children to number of Teachers, by Commune, in 2008



### 3.1.6 Ratio of 6-11 year old and 12-14 year old Children to number of School Rooms, by Commune, in 2008



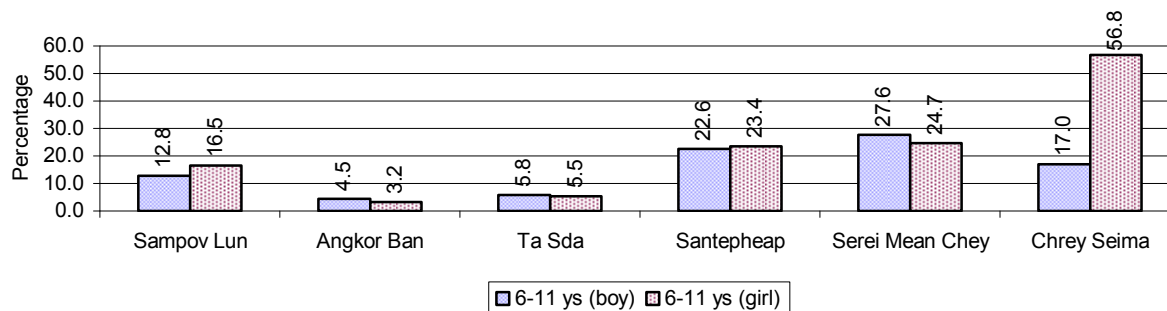
### 3.1.7 Enrolment status at Primary Level over 3 years

Description	2006 %	2007 %	2008	
			%	Number
Total children aged 6-11 years old	16%	15%	15%	4,699 person(s)
Total children aged 6-11 who are in school	84%	84%	73%	3,435 person(s)
Total children aged 6-11 who are not in school	16%	16%	27%	1,264 person(s)
Total girls aged 6-11 years old	16%	15%	16%	2,531 person(s)
Total girls aged 6-11 who are in school	82%	85%	67%	1,703 person(s)
Total girls aged 6-11 who are not in school	18%	15%	33%	828 person(s)
Total boys aged 6-11 years old	17%	15%	14%	2,168 person(s)
Total boys aged 6-11 who are in school	86%	83%	80%	1,732 person(s)
Total boys aged 6-11 who are not in school	14%	17%	20%	436 person(s)

**Note 1:** Percentage is calculated on the basis of the total number of children within 6-11 year age group for the first 3 rows and for the total girls and the total boys aged 6-11 yrs.

**Note 2:** Number of girls aged 6-11 who are in & not in school is calculated against the total number of girls aged 6-11 yrs. Number boys, 6-11 yrs who are in & not in school are calculated against the total number of boys aged 6-11 yrs.

### 3.1.8 Percentage of 6-11 year old Children not in School, by Commune, in 2008



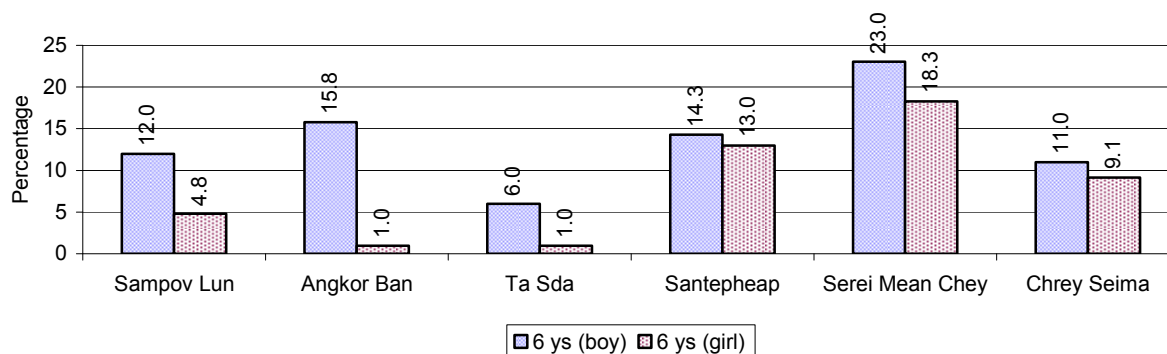
**Note:** calculated on the basis of the total number of children within 6-11 year age group in the commune.

### 3.1.9 Enrolment of 6 year old Children over 3 years

Description	2006 %	2007 %	2008	
			%	Number
Total % and number of children aged 6 years old	4%	4%	3%	1,074 person(s)
Total % of children aged 6 years old in school	87%	88%	83%	890 person(s)
Total % of children aged 6 years old not in school	13%	12%	17%	184 person(s)

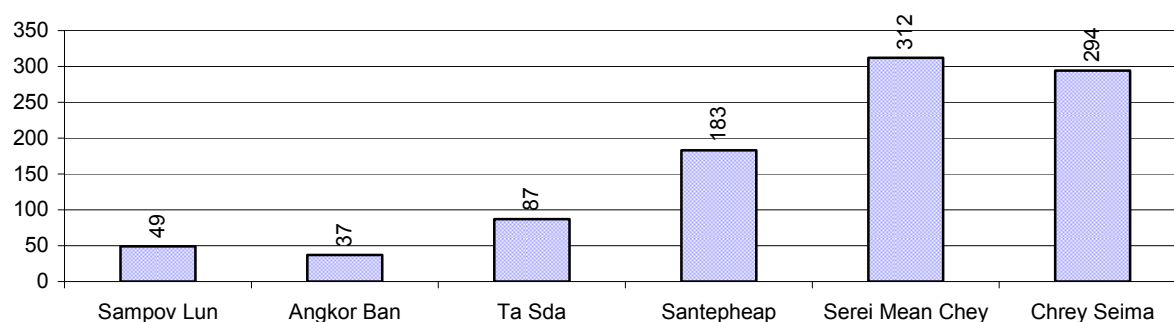
**Note:** First row calculated as a percentage of total population. Second and third row calculated as a percentage of the total number of 6 year olds.

### 3.1.10 Percentage of 6 year old Children not in School, by Commune, in 2008



**Note:** Calculated as a percentage of total 6 year old population

### 3.1.11 Number of 5 year old Children in each Commune in 2008

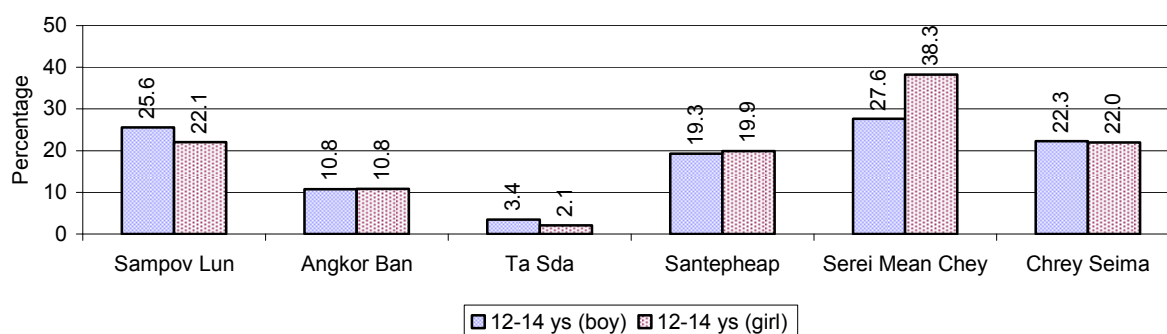


### 3.1.12 Enrolment at Lower Secondary Level over 3 years

Description	2006 %	2007 %	2008	
			%	Number
Total <b>children</b> aged 12-14 years old	8%	10%	8%	2,373 person(s)
Children aged 12-14 years old in school	79%	80%	77%	1,835 person(s)
Children aged 12-14 years old not in school	21%	20%	23%	538 person(s)
Total <b>girls</b> aged 12-14 years old	8%	9%	8%	1,189 person(s)
Girls aged 12-14 years old in school	79%	79%	76%	901 person(s)
Girls aged 12-14 years old not in school	21%	21%	24%	288 person(s)
Total <b>boys</b> aged 12-14 years old	9%	10%	8%	1,184 person(s)
Boys aged 12-14 years old in school	78%	81%	79%	934 person(s)
Boys aged 12-14 years old not in school	22%	19%	21%	250 person(s)

**Note:** Percentage is calculated on the basis of number of the total number of children within 12-14 yrs group, except for the first row of each section which is calculated on the basis of the total population.

### 3.1.13 Percentage of 12-14 year olds not in School, by Commune, in 2008



**Note:** Calculated as a percentage of the total 12-14 year old population in each commune

### 3.1.14 Upper Secondary Schools over 3 years

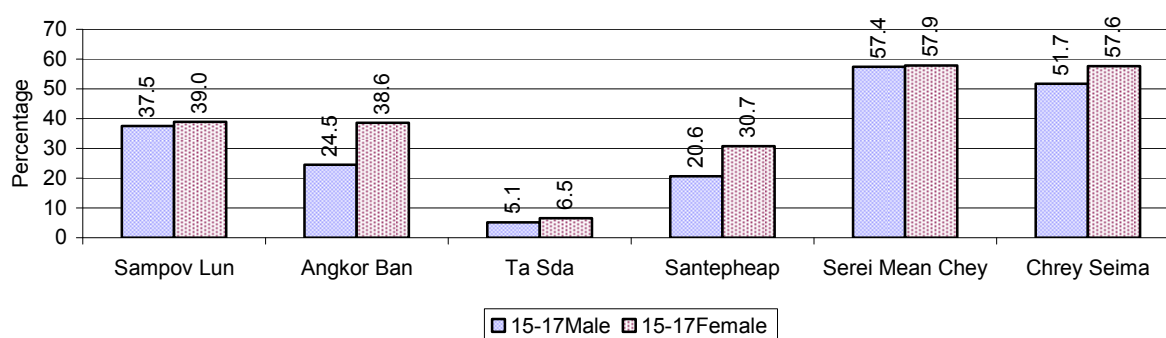
Description	2006	2007	2008
Number of upper secondary schools	2 school(s)	2 school(s)	2 school(s)
Number of upper secondary school rooms	5 room(s)	5 room(s)	11 room(s)
Number of upper secondary classes	5 class(es)	6 class(es)	16 class(es)
Number of upper secondary teachers	8 person(s)	8 person(s)	25 person(s)
Ratio of 15-17 yr olds to number of school	908	960	1,297

Description	2006	2007	2008
Ratio of 15-17 yr olds to number of school room	363	384	236
Ratio of 15-17 yr olds to number of classes	363	320	162
Ratio of 15-17 yr olds to number of teacher	227	240	104

### 3.1.15 Enrolment of 15-17 year old teenagers over 3 years

Description	2006	2007	2008
Number of teenage, 15-17 years old	1,815 person(s)	1,919 person(s)	2,594 person(s)
Number of teenage, 15-17 years old, who are not studying	610 person(s)	678 person(s)	1,028 person(s)
Percentage of teenage, 15-17 years old not studying	34%	35%	40%

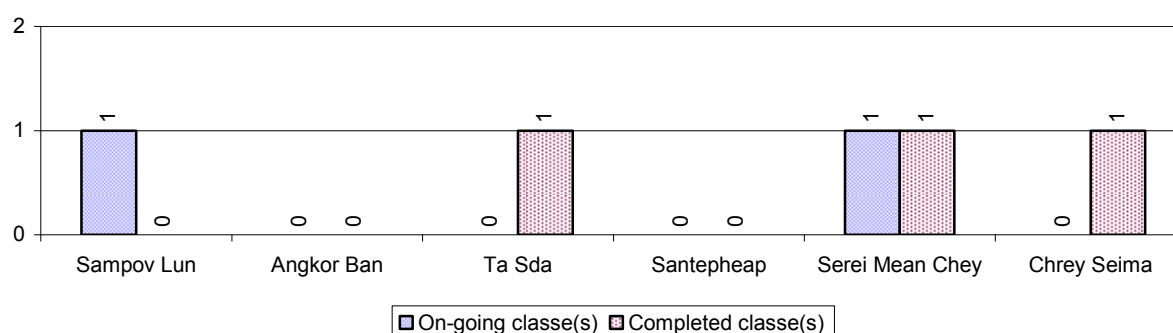
### 3.1.16 Percentage of 15-17 year old Teenagers not at School, by Commune, in 2008



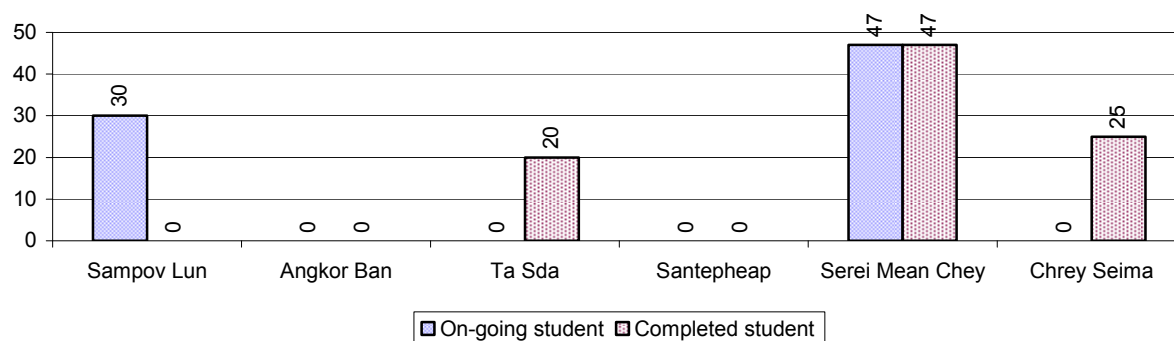
### 3.1.17 Literacy Classes as of 2008

Literacy classes	Organized by:		Other Program(s)	Total
	PDoEYS	NGOs		
Number of On-going literacy classes	1 class(es)	1 class(es)	0 class(es)	2 class(e(s)
Number of literacy students in on-going classes	47 person(s)	30 person(s)	0 person(s)	77 person(s)
Completed literacy class(es)	3 classes	0 classes	0 classes	3 classes
Number of literacy students that have completed literacy classes	92 person(s)	0 person(s)	0 person(s)	92 person(s)
Number of students that passed	91 person(s)	0 person(s)	0 person(s)	91 person(s)

### 3.1.18 Number of on-going and completed Literacy Classes, by Commune, in 2008



### 3.1.19 Students of on-going & completed Literacy Classes, by Commune, in 2008

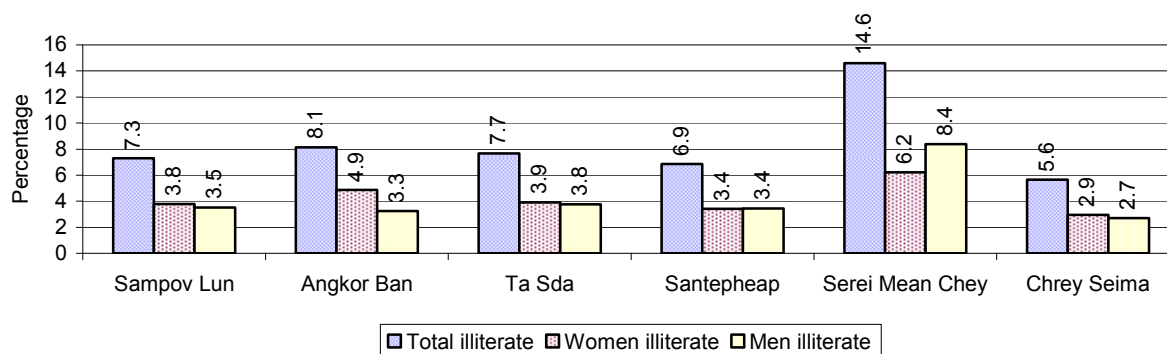


### 3.1.20 Percentage of illiterate People between 15-60, over 3 years

Illiteracy Status	2006 %	2007 %	2008	
			%	Number
Illiterate people, 15-60 years old	9%	8%	9%	1,754 person(s)
Illiterate females, 15-60 years old	5%	4%	4%	833 person(s)
Illiterate people, 15-17 years old	7%	5%	8%	220 person(s)
Illiterate females, 15-17 years old	3%	2%	4%	94 person(s)
Illiterate people, 18-24 years old	6%	5%	7%	321 person(s)
Illiterate females, 18-24 years old	3%	2%	3%	149 person(s)
Illiterate people, 25-60 years old	11%	10%	10%	1,213 person(s)
Illiterate females, 25-60 years old	6%	5%	5%	590 person(s)

**Note:** Percentage is calculated on the basis of number of people in age each group.

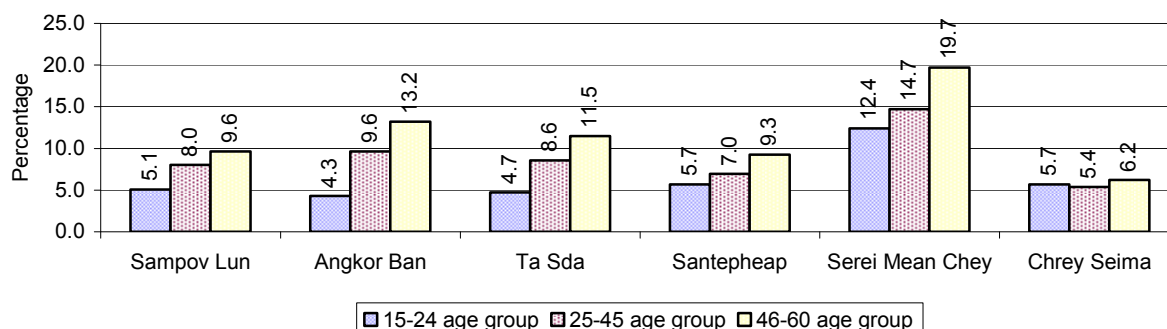
### 3.1.21 Percentage illiterate People among 15-60 yrs old, by Commune, in 2008



**Note:** Percentages are calculated on the basis of number of people in that age group.



### 3.1.22 Percentage illiterate People for 15-24 yrs, 25-45 yrs and 46-60 yrs, by Commune, in 2008



**Note:** Percentage of illiterate people in each age group is calculated on the basis of number of people in that age group.

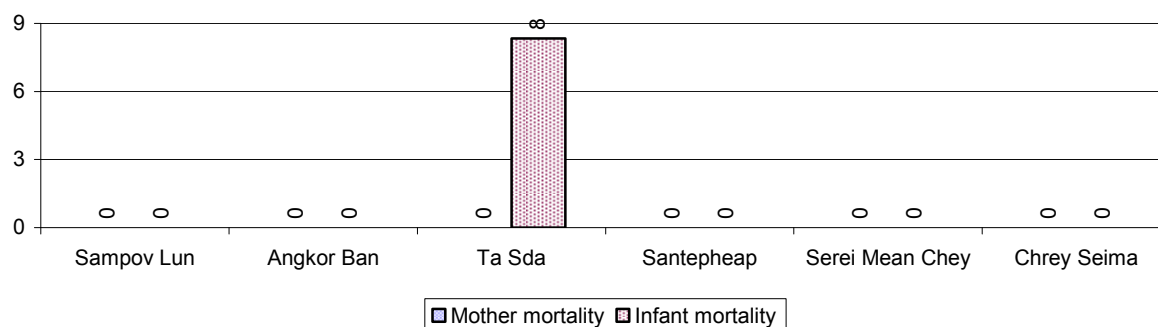
## 3.2 Health

### 3.2.1 Health Situation of Women and Children, over 3 years

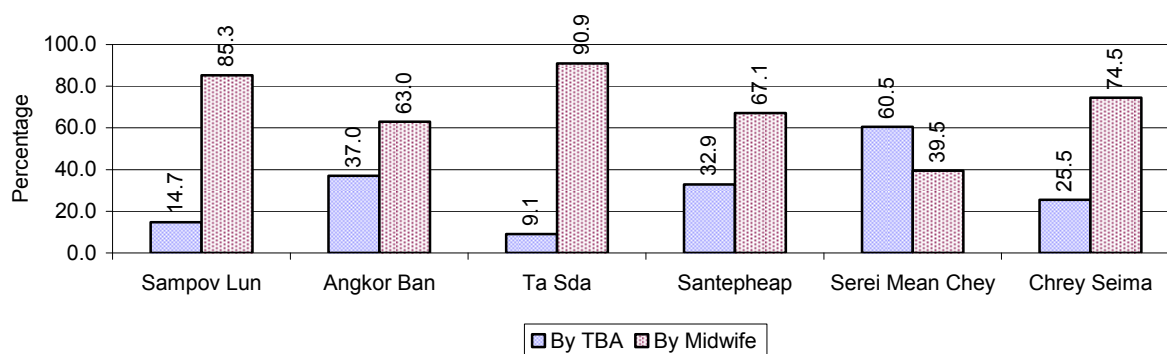
Description	2006	2007	2008
Number families with a birth during the year	311 families	317 families	469 families
Number of women who had their baby delivered by a TBA	119 person(s)	69 person(s)	174 person(s)
Percentage of women who had their baby delivered by a TBA	38 %	22 %	37 %
Number of women who had their baby delivered by a midwife	192 person(s)	248 person(s)	295 person(s)
Percentage of women had their baby delivered by a midwife	62 %	78 %	63 %
Number of mothers who died within 1 month of giving birth	2 person(s)	1 person(s)	0 person(s)
Mothers who died within 1 month of giving birth per 100,000 families having a delivery	643	315	0
Number of infants born during the year	311 person(s)	317 person(s)	471 person(s)
Number of Infants who died within 1 month	9 person(s)	2 person(s)	3 person(s)
Infants mortality within 1 month per 1,000 births	29	6	6
Number of children who died below the age of 5.	9 person(s)	5 person(s)	14 person(s)
Number of infants, aged 9-12 months, born during the year	189 person(s)	182 person(s)	252 person(s)
Nr. infants, aged 9-12 months, not receiving full immunization	6 person(s)	11 person(s)	71 person(s)
% of 9-12 months infants, not receiving full immunization	3 %	6 %	28 %

**Note:** TBA = Traditional Birth Attendant

### 3.2.2 Mothers dying within 0 days to 1 month of giving Birth and Infants dying within 1 month in 2008, by Commune

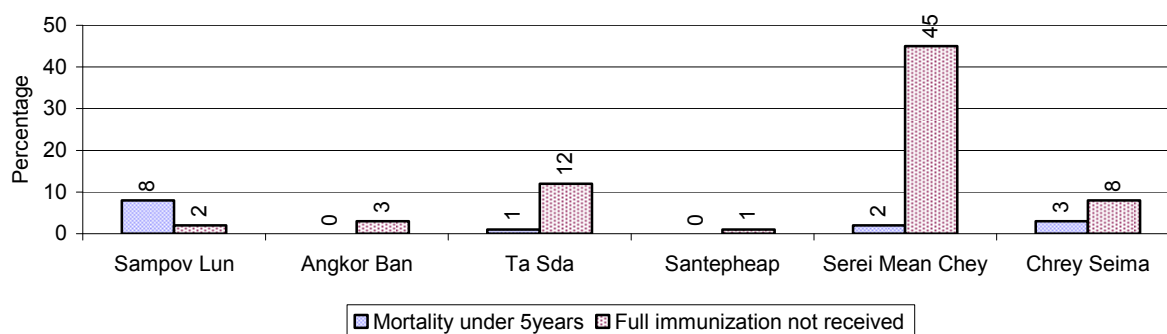


### 3.2.3 Percentage of Women delivering with a TBA or Midwife, by Commune



**Note:** Calculated as a percentage of total deliveries

### 3.2.4 Percentage of Children dying below 5 & of 9-12 months not receiving full Immunization, by Commune, in 2008



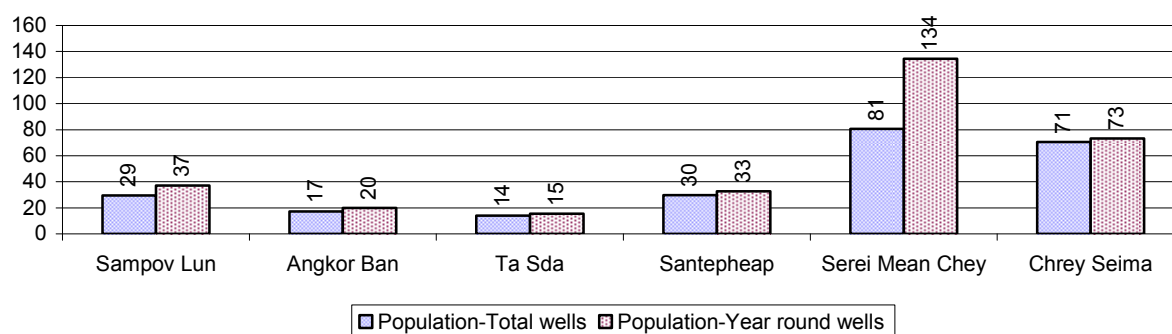
**Note:** Mortality rate calculated as a percentage of the total 5 year old population. Lack of immunization received calculated as a percentage of the total number 9-12 months olds there are

### 3.3 Water and Sanitation

#### 3.3.1 Number of different types of Wells over 3 years

Type of wells	Number of wells by year		
	2006	2007	2008
<i>Total number of pumped or mixed wells</i>	646	698	747
Year-round usable pumped or mixed wells	554	604	648
Dry season unusable pump or mixed wells	92	94	99
Pump or mixed wells needing repair/rehabilitation	38	51	50
<i>Total number of ring wells</i>	63	64	128
Year-round usable ring wells	13	14	104
Dry season unusable ring wells	50	50	24
Ring wells needing repair/rehabilitation	23	1	170
<i>Total number of unprotected dug wells</i>	224	218	96
Year-round usable unprotected dug wells	169	165	72
Dry season unusable unprotected dug wells	55	53	24

#### 3.3.2 Ratio of People to Wells, by Commune, in 2008

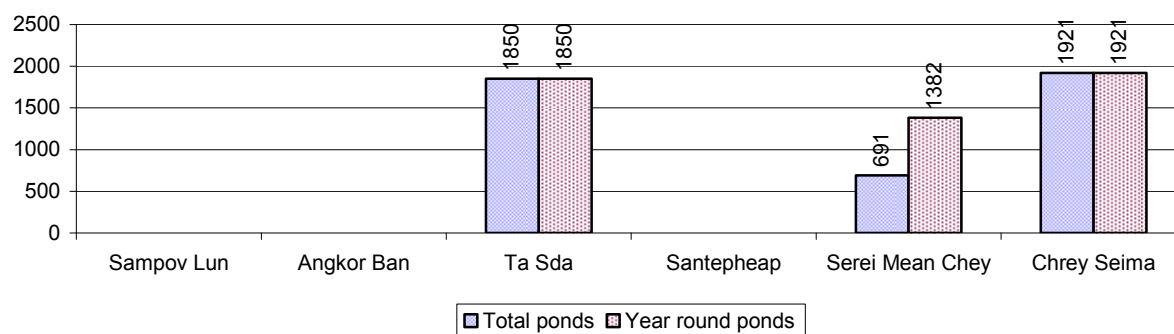


**Note:** Year-round wells excluding unprotected wells

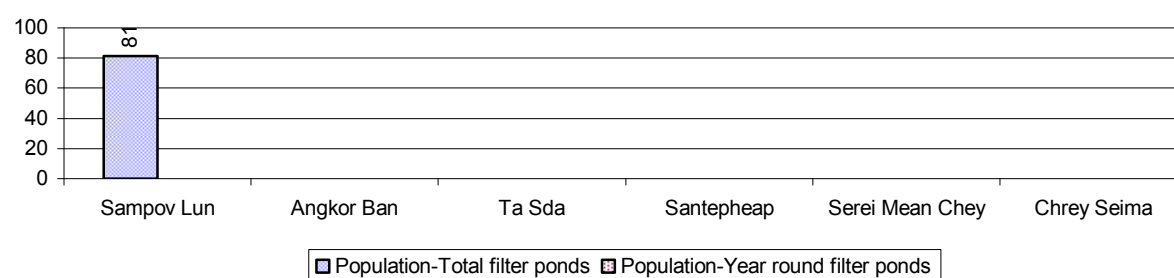
#### 3.3.3 Potable Ponds over 3 years

Type of Pond	2006	2007	2008
<i>Total number of normal-type ponds</i>	14 pond	13 pond	20 pond
Year-round usable normal-type ponds	6 pond	6 pond	13 pond
Dry season unusable normal-type ponds	8 pond	7 pond	7 pond
Normal-type ponds needing repair/rehabilitation	6 pond	2 pond	12 pond
<i>Total number of filter ponds</i>	0 pond	0 pond	21 pond
Year-round usable filter ponds	0 pond	0 pond	0 pond
Filter ponds, dry season unusable	0 pond	0 pond	21 pond
Filter ponds needing repair/rehabilitate	0 pond	0 pond	15 pond

### 3.3.4 Ratio of People to normal Ponds, by Commune in 2008



### 3.3.5 Ratio of People to Filter Ponds, by Commune, in 2008

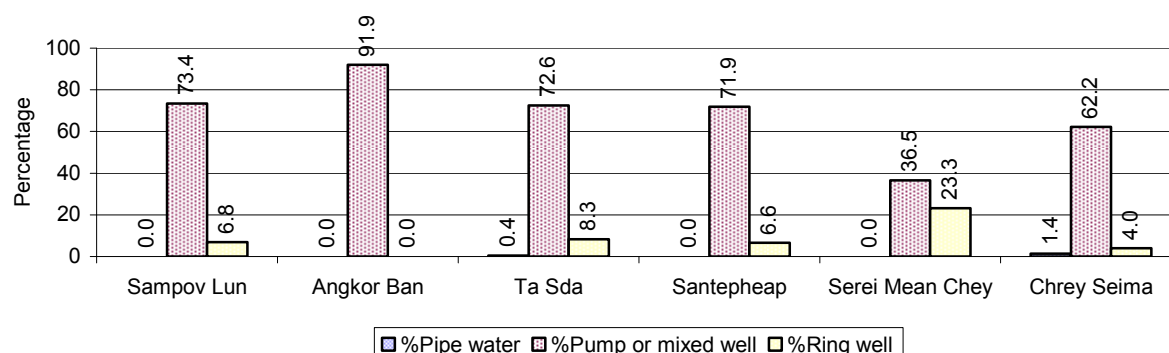


### 3.3.6 Source of potable Water for Households, over 3 years

Water sources	2006	2007	2008	
	%	%	%	Number
Families using water from purification system	0%	0 %	0 %	23 families
Families using water from pump, mixed wells	71%	76 %	60 %	3,809 families
Families using water from ring wells and open dug wells	8%	5 %	11 %	709 families
Families using water from pond	1%	0 %	8 %	488 families
Families using water from rain water storage	19%	18 %	16 %	1,008 families
Families using water from rivers, lakes, natural ponds and reservoirs	1%	0 %	5 %	330 families

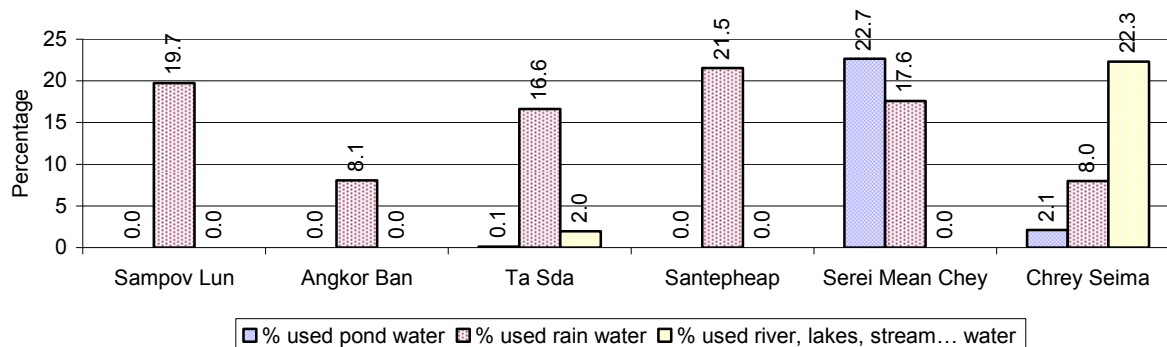
**Note:** Calculated as a percentage of the total number of families.

### 3.3.7 Percentage Families using different Water Sources, by Commune, in 2008



**Note:** Calculated as a percentage of the total number of families in each commune

### 3.3.8 Percentage Families using Water from Rain Water Storage, Ponds and natural Sources (rivers/lakes/natural ponds/reservoirs), by Commune, 2008



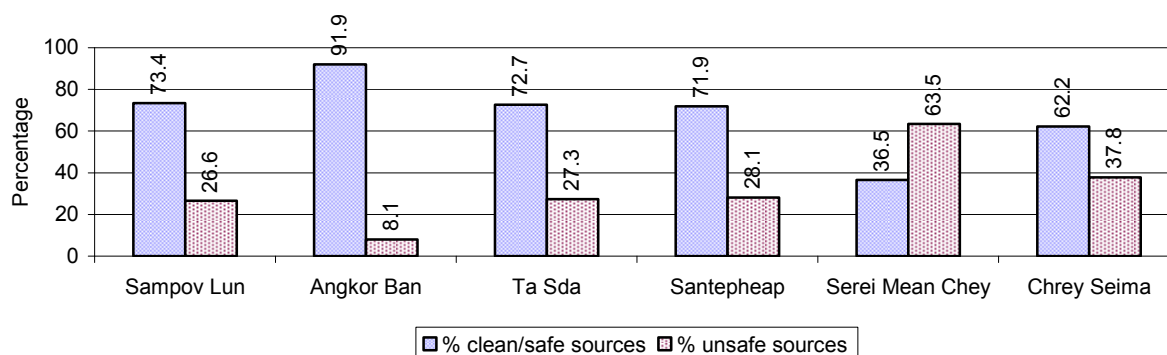
**Note:** Calculated as a percentage of the total number of families in each commune

### 3.3.9 Drinking Water Sources in the dry Season over 3 years

Percentage Families that get drinking water from:	2006	2007	2008	
	%	%	%	Number
from clean/safe sources	70 %	77 %	60 %	3,810 families
from unsafe sources	30 %	23 %	40 %	2,557 families

**Note:** Calculated as a percentage of the total number of families.

### 3.3.10 Percentage Families using safe and unsafe Water Sources in the dry Season, by Commune, in 2008



**Note:** Calculated as a percentage of the total number of families in each commune.

### 3.3.11 Drinking Water Purification by Households, over 3 years

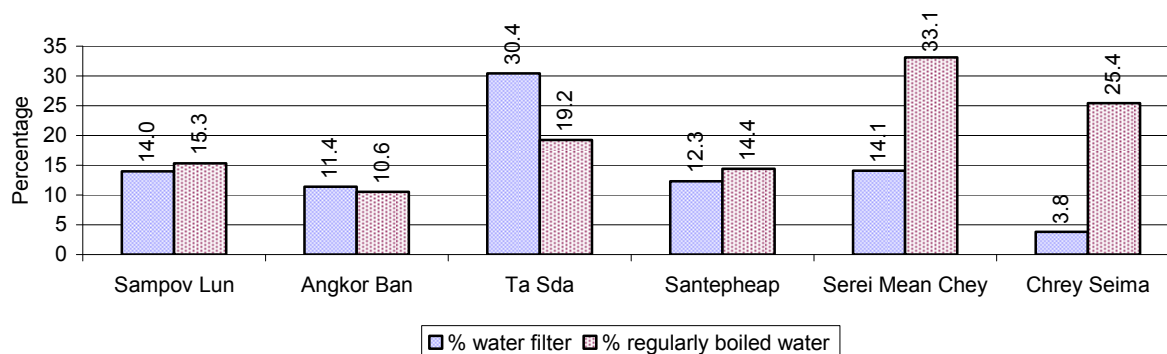
*This table shows the different ways families make water safe for drinking.*

Families, who:	2006	2007	2008	
	%	%	%	Number
Filter water for drinking	8%	15%	13 %	842 families
Boil water for drinking	23%	14%	23 %	1,477 families

**Note:** Calculated as a percentage of the total number of families

### 3.3.12 Percentage Families filtering Water or regularly boiling Water, by Commune, in 2008

This graph shows the different ways families make drinking water safe.



**Note:** Calculated on as a percentage of the total number of families in each commune.

### 3.3.13 Families' access to Water, over 3 years

Families access to water	2006	2007	2008	
	%	%	%	Number
Families with water at home or in less then 150m	55%	61%	44 %	2,823 families
Families with water 150m or more away from home	15%	22%	16 %	1,043 families

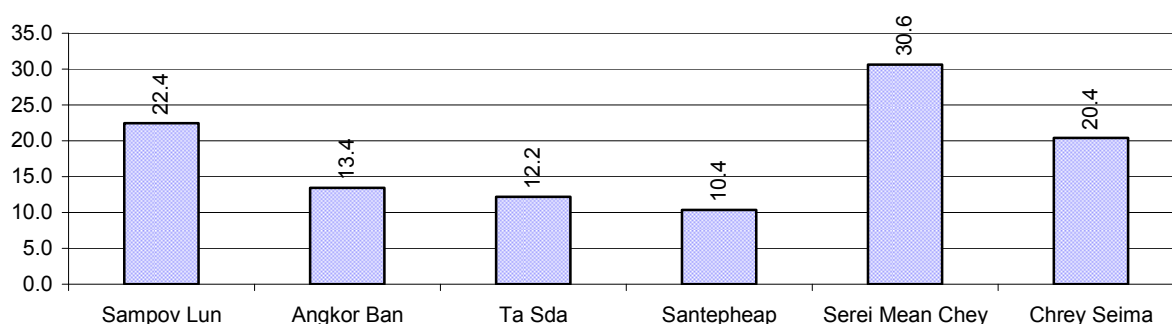
**Note:** Calculated as a percentage of the total number of families

### 3.3.14 Ratio of people to Latrines over 3 years

Description	2006	2007	2008	
	Ratio	Ratio	Ratio	Number
Ratio of people to latrines	18.2	13.8	16.9	1,833.0

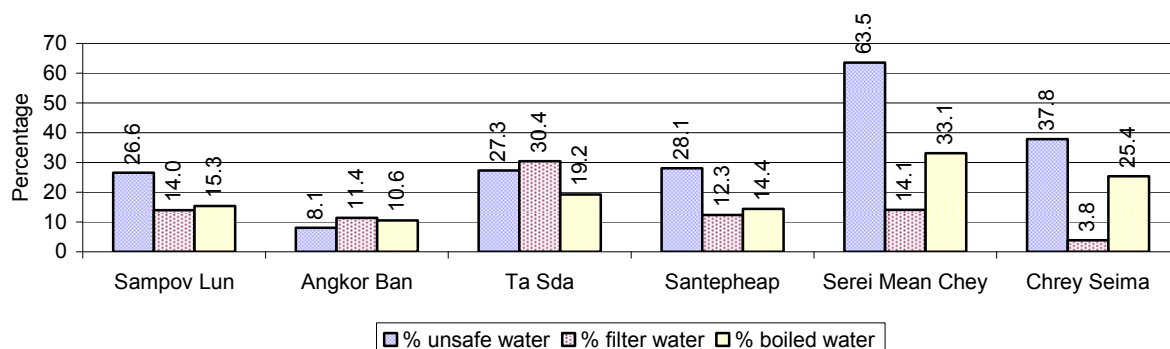
**Note:** Ratio calculated by dividing the number of houses with latrines by the total population

### 3.3.15 Ratio of People to Latrines, by Commune, in 2008



**Note:** Ratio calculated by dividing the number of houses with latrines by the total population in a Commune.

### 3.3.16 Percentage of Families drinking boiled, filtered or unsafe Water, by Commune, in 2008



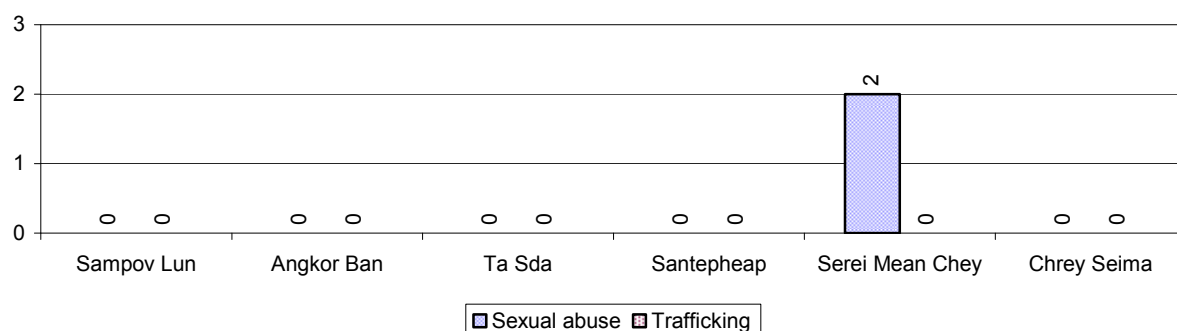
**Note:** Calculated as a percentage of the total number of families in each commune.

## 3.4 Vulnerable groups

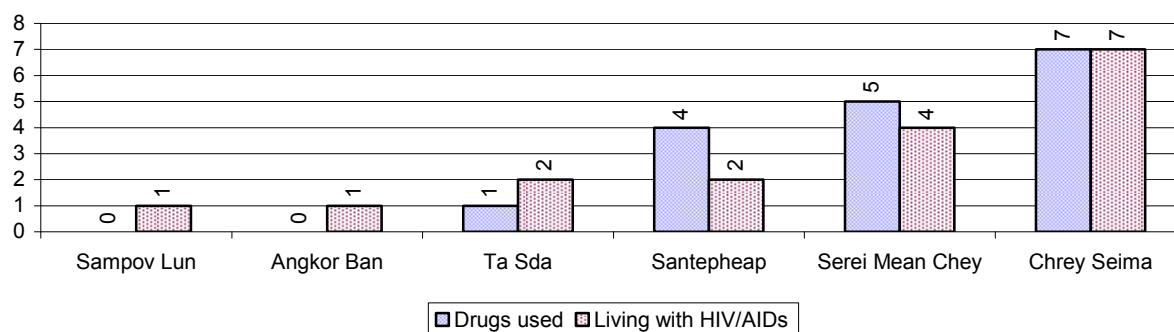
### 3.4.1 Vulnerable Groups in need of special Protection over 3 years

Vulnerable groups	2006	2007	2008
Victims of sexual abuse	2 person(s)	3 person(s)	2 person(s)
Victims of human trafficking	0 person(s)	0 person(s)	0 person(s)
Families with family member(s) using drugs	18 families	11 families	17 families
Families with family member(s) living with HIV/AIDS	11 families	10 families	17 families
Children under 18 yrs old whose parent died of AIDS	7 person(s)	8 person(s)	895 person(s)
Orphaned/abandoned children under 18 yrs old (all cases)	58 person(s)	33 person(s)	76 person(s)
Elderly persons without guardian	24 person(s)	22 person(s)	42 person(s)
Disabled people able to earn an income	76 person(s)	73 person(s)	104 person(s)
Disabled people unable to earn an income	81 person(s)	54 person(s)	72 person(s)
Disabled people under 18 yrs old	10 person(s)	10 person(s)	10 person(s)
Victims of natural disasters	1,660 families	1,223 families	1,708 families
Victims of land mines and unexploded weapons	47 person(s)	4 person(s)	5 person(s)

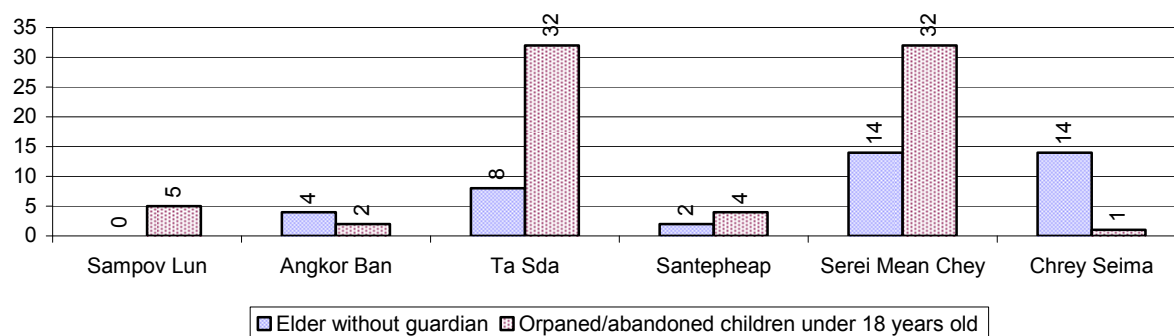
### 3.4.2 Registered Victims of sexual Abuse or Trafficking, by Commune, for 2008



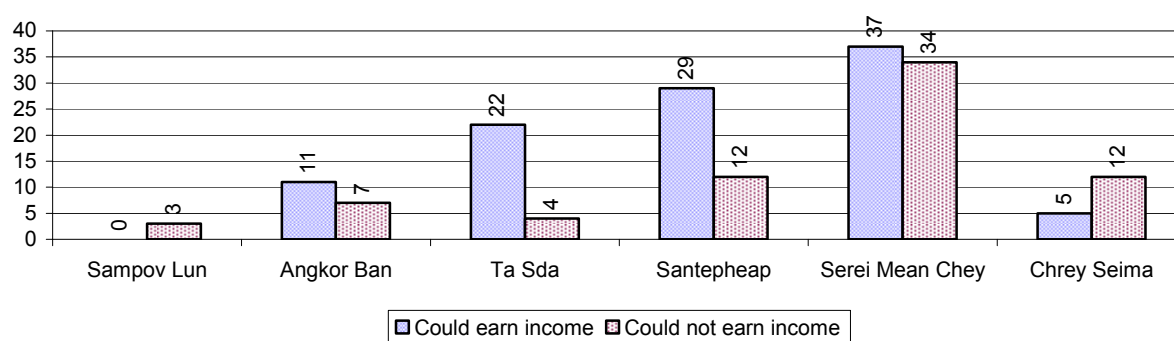
### 3.4.3 Registered Families with Member(s) using Drugs or living with HIV/AIDS, by Commune, for 2008



### 3.4.4 Elderly Persons without a Guardian and orphaned/abandoned Children under 18 years old, by Commune, for 2008

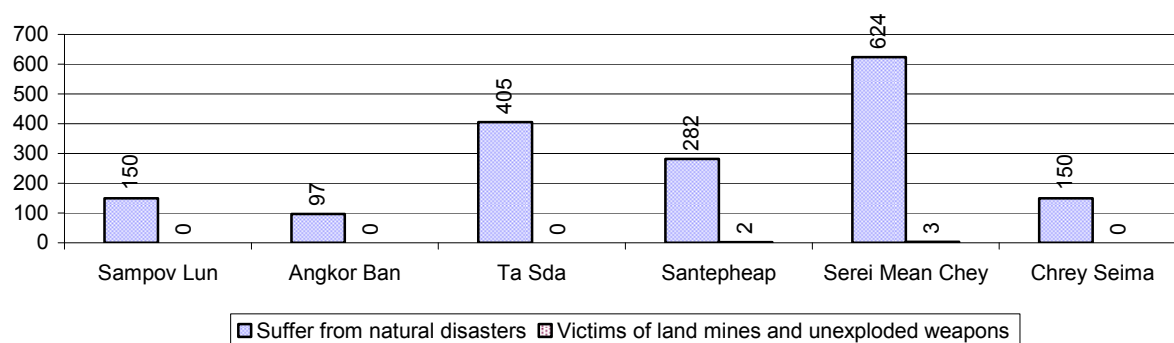


### 3.4.5 Number of disabled People who could or could not earn an Income, by Commune, for 2008





### 3.4.6 Number of Families who suffered from natural Disasters, and number of Victims of Land Mines and unexploded Weapons, by Commune, in 2008



## 3.5 Migration

### 3.5.1 Migration over 3 years

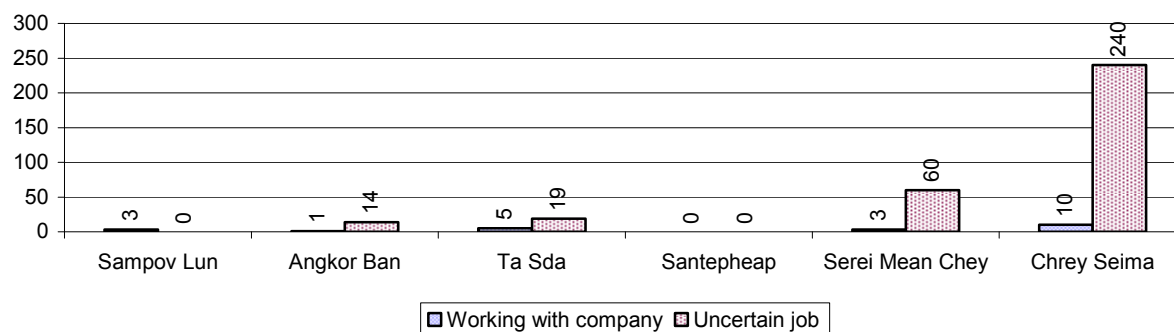
Description	2006	2007	2008
Number of families permanently in-migrated	322 families	111 families	493 families
Total number of people	1,079 person(s)	496 person(s)	2,052 person(s)
Total number of female	429 person(s)	272 person(s)	964 person(s)
Number of families permanently out-migrated	118 families	27 families	308 families
Total number of people	420 person(s)	112 person(s)	1,575 person(s)
Total number of female	236 person(s)	64 person(s)	851 person(s)
Number of families staying temporarily	564 families	286 families	395 families
Total number of people	1,936 person(s)	1,152 person(s)	1,675 person(s)
Total number of female	1,071 person(s)	587 person(s)	893 person(s)

### 3.5.2 Job Migration

Description	2006	2007	2008
Number of people migrated to work with company/factory	0%	0%	0%
Number of people migrated to work, but have uncertain jobs	3%	2%	2%

**Note:** Calculated as a percentage of the total population of 18-60 year olds

### 3.5.3 Number of People working outside their home Villages in a Company/Factory or with an uncertain Job in 2008

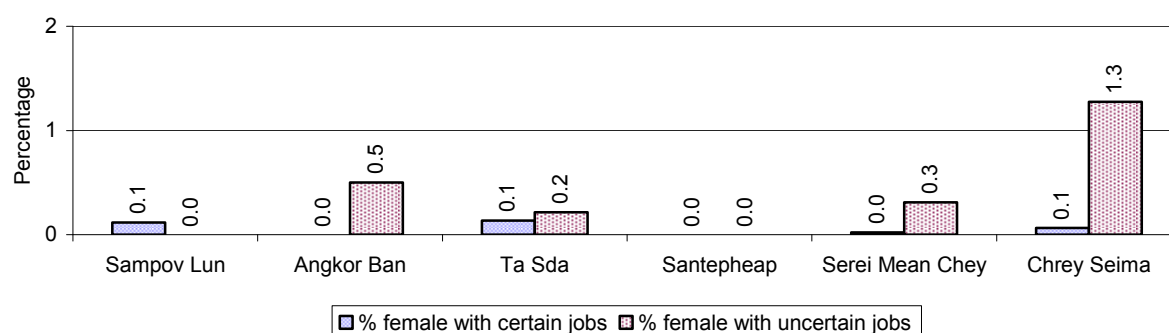


### 3.5.4 Female migration over 3 years

Description	2006 %	2007 %	2008	
			%	Number
Total number of migrants	1.8%	1.2%	1.1%	355 person(s)
Number of female migrants	0.8%	0.5%	0.5%	159 person(s)
Total number of migrants, who go to work with company/factory (with certain jobs)	0.2%	0.1%	0.1%	22 person(s)
Number of female migrants with certain jobs	0.1%	0.1%	0.0%	14 person(s)
Total number of migrants with uncertain jobs	1.6%	1.1%	1.1%	333 person(s)
Number of female migrants with uncertain jobs	0.6%	0.4%	0.5%	145 person(s)

**Note:** Calculated as a percentage of the total population

### 3.5.5 Percentage female Migrants with certain and uncertain Jobs, by Commune, in 2008



**Note:** Calculated as a percentage of the total population of the commune

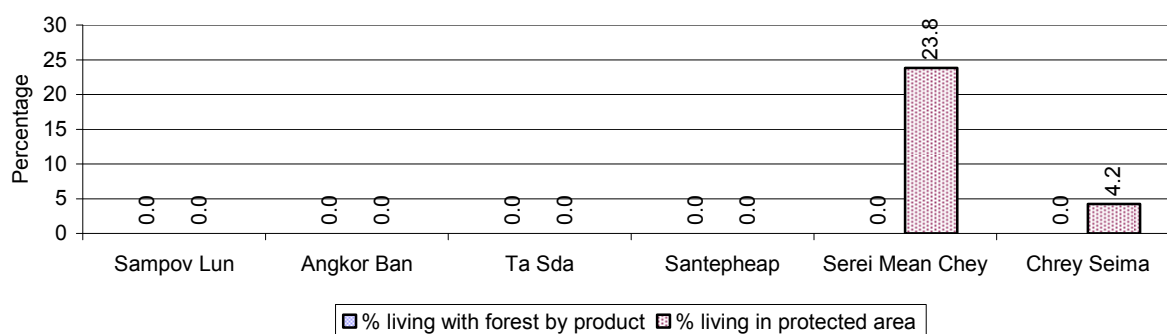
## 4 Natural Resources and Environment (NRE)

### 4.1 Families involved with NRE issues over 3 years

Description	2006 %	2007 %	2008	
			%	Number
Families living with forest by products	0 %	0 %	0 %	0 families
Families living in a protected area	4 %	4 %	8 %	541 families
Houses with access to garbage collection service	0 %	0 %	0 %	0 families
Families affected by environmental pollution	0 %	0 %	0 %	5 families
Families using chemical fertilizer	65 %	61 %	40 %	2,515 families
Families using chemical pesticide	83 %	77 %	61 %	3,873 families

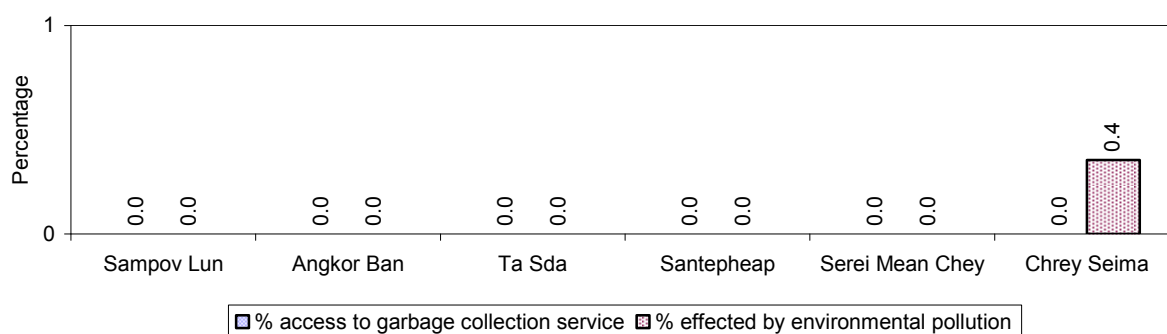
**Note:** Calculated as a percentage of the total number of families

### 4.2 Percentage of Families involved with Natural Resource issues, by Commune, for 2008



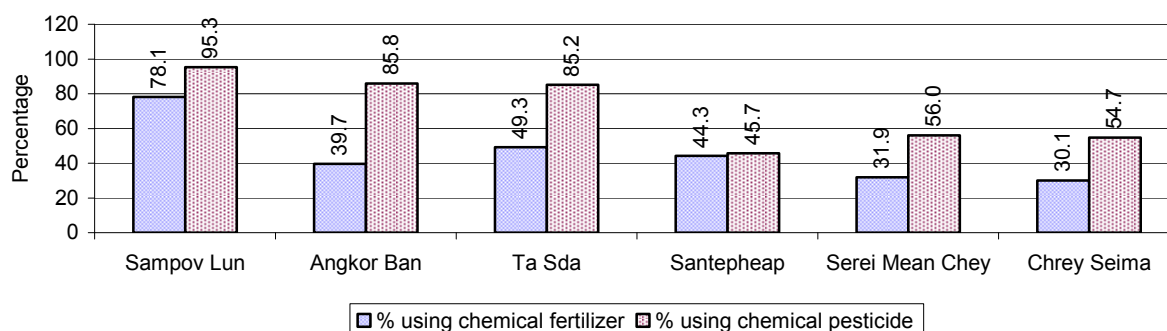
**Note:** Calculated as a percentage of the number of families in each commune

### 4.3 Percentage Houses with access to Garbage collection and Families affected by environmental Pollution, by Commune, for 2008



**Note:** Garbage collection is calculated as a percentage of the total number of houses in each commune and families affected by environmental pollution is calculated as a percentage of the total number of families in each commune.

#### 4.4 Percentage Families using chemical Fertilizer and chemical Pesticides, by Commune, for 2008



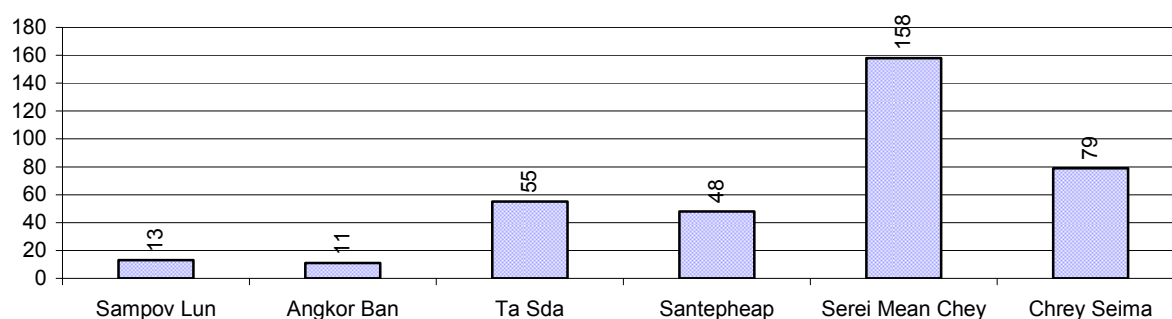
**Note:** Calculated as a percentage of the total number of families in each commune

## 5 Administration and Security

### 5.1 Birth Registration across 3 years

Description	2006	2007	2008
Number of infants to be registered	302 person(s)	315 person(s)	468 person(s)
Number of unregistered infants the year	179 person(s)	203 person(s)	364 person(s)
Percentage of infants unregistered	59 %	64 %	78 %

### 5.2 Number of unregistered Infants born in 2008, by Commune

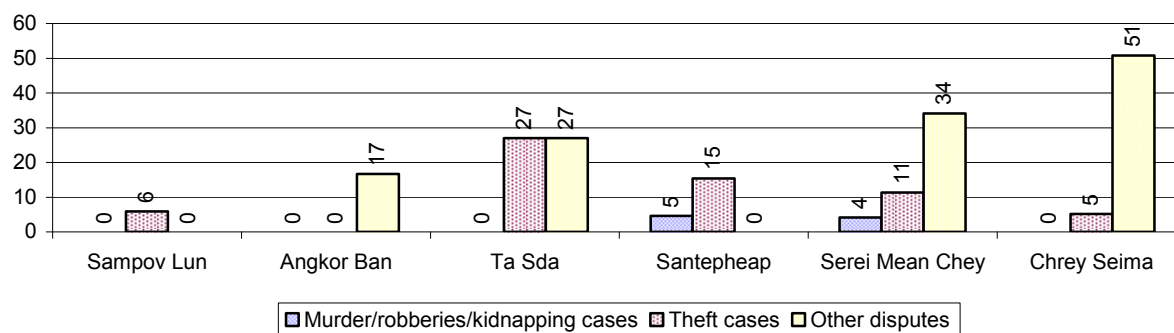


### 5.3 Registered criminal Cases over 3 years

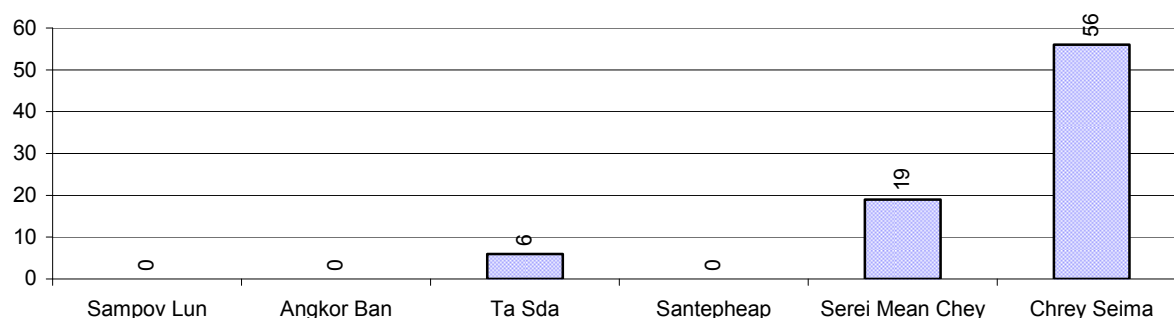
Description	2006	2007	2008
Murders, robberies and kidnapping cases	8 case(s)	0 case(s)	7 case(s)
Theft cases	61 case(s)	33 case(s)	36 case(s)
land dispute cases	25 case(s)	15 case(s)	81 case(s)
Other disputes cases	58 case(s)	37 case(s)	85 case(s)

**Note:** this reflects only registered criminal cases

#### 5.4 Registered criminal Cases per 10,000 people, by Commune, for 2008



#### 5.5 Number of registered Land Disputes, by Commune, in 2008

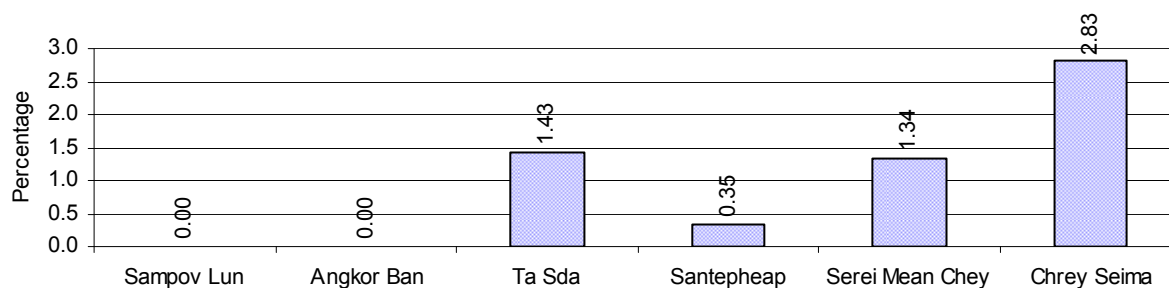


## 6 Gender

### 6.1 Registered Domestic Violence over 3 years

Description		2006	2007	2008
Families experiencing domestic violence		50 families	27 families	83 families(s)
% families experiencing domestic violence		1 %	1 %	1 %
Domestic violence cases reported by village chiefs		1 case(s)	15 case(s)	16 case(s)
Type	Physical violence	1 case(s)	13 case(s)	13 case(s)
	Sexual violence	0 case(s)	0 case(s)	1 case(s)
	Mental violence	0 case(s)	1 case(s)	1 case(s)
	Household economic violence	0 case(s)	1 case(s)	1 case(s)
Number of administrative decisions on domestic violence		1 case(s)	14 case(s)	7 case(s)
% of administrative decisions on domestic violence		100 %	93 %	44 %

## 6.2 Percentage of registered cases of Families experiencing domestic Violence, by Commune, in 2008



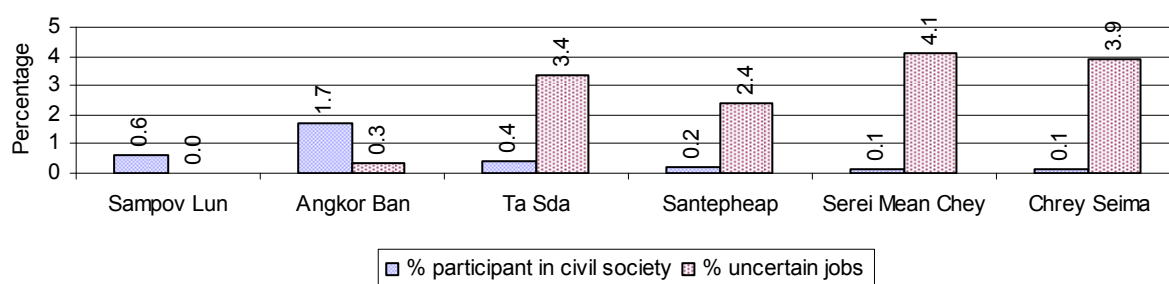
**Note:** Calculated as a percentage of the total number of families in each commune

## 6.3 Women's involvement over 3 years

Description	2006 %	2007 %	2008	
			%	Number
People participating in civil society	1%	1%	1%	189 person(s)
Women participating in civil society	0%	0%	0%	94 person(s)
People, 18-60 yrs, with uncertain/irregular jobs	8%	10%	6%	1,030 person(s)
Women, 18-60 yrs, with uncertain/irregular jobs	4%	5%	3%	531 person(s)

**Note:** Participation can be in NGOs, CBOs, credit groups, women's unions, parties and other civil society organizations. The first section is calculated as a percentage of the total population. The second section is calculated as a percentage of the total 18-60 year old population.

## 6.4 Percentage of Female Participants in Civil Society and of 18-60 year women with uncertain Jobs, by Commune, in 2008



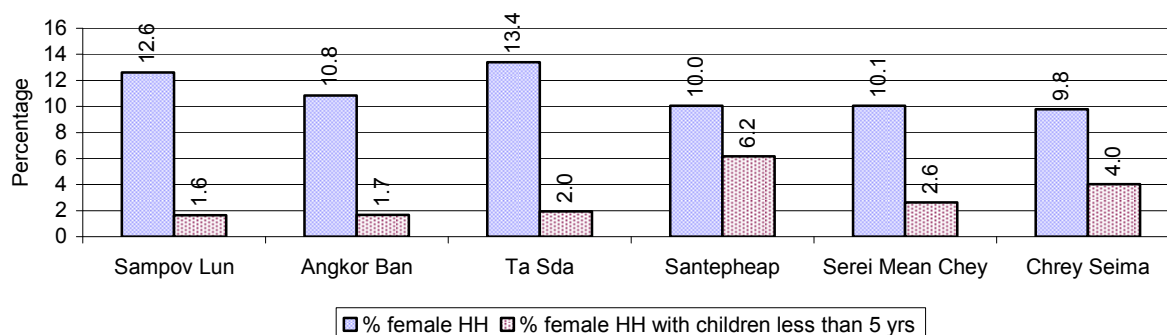
**Note:** Percentage of female participants in civil society is calculated as a percentage of the total population per commune. The percentage of 18-60 years old women with uncertain jobs is calculated as a percentage of the total 18-60 year old population per commune.

## 6.5 Female-headed Households over 3 years

Families with:	2006 %	2007 %	2008	
			%	Number
Households in which a woman is the family head	11%	11%	11%	674 families
Households in which a woman is the family head with children of less than 5 yrs	3%	3%	4%	226 families

**Note:** Calculated as a percentage of the total number of families

## 6.6 Percentage female-headed Households and with Children of less than 5 years old, by Commune, in 2008



**Note:** Calculated as a percentage of the total number of families in each commune  
HH: Headed Household

## 7 Indigenous People in the District

### 7.1 Ethnic Minorities in the District over 3 years

Race of indigenous	2006		2007		2008	
	# families	# population	# families	# population	# families	# population
Phnong	0 families	0 person(s)	0 families	0 person(s)	0 families	0 person(s)
Kouy	0 families	0 person(s)	0 families	0 person(s)	0 families	0 person(s)
Stieng	0 families	0 person(s)	0 families	0 person(s)	0 families	0 person(s)
Mil	0 families	0 person(s)	0 families	0 person(s)	0 families	0 person(s)
Kroal	0 families	0 person(s)	0 families	0 person(s)	0 families	0 person(s)
Thmorn	0 families	0 person(s)	0 families	0 person(s)	0 families	0 person(s)
Khaonh	0 families	0 person(s)	0 families	0 person(s)	0 families	0 person(s)
Tompounn	0 families	0 person(s)	0 families	0 person(s)	0 families	0 person(s)
Charay	0 families	0 person(s)	0 families	0 person(s)	0 families	0 person(s)
Kroeung	0 families	0 person(s)	0 families	0 person(s)	0 families	0 person(s)
Kavet	0 families	0 person(s)	0 families	0 person(s)	0 families	0 person(s)
Saouch	0 families	0 person(s)	0 families	0 person(s)	0 families	0 person(s)
Lun	0 families	0 person(s)	0 families	0 person(s)	0 families	0 person(s)
Kachak	0 families	0 person(s)	0 families	0 person(s)	0 families	0 person(s)
Praov	0 families	0 person(s)	0 families	0 person(s)	0 families	0 person(s)
Others	0 families	0 person(s)	0 families	0 person(s)	0 families	0 person(s)
<b>Total</b>	0 families	0 person(s)	0 families	0 person(s)	0 families	0 person(s)

**Note:** "Others" refer to other ethnic groups which are not listed.

### 7.2 Other Minorities in the District over 3 years

Minority	2006		2007		2008	
	# families	# population	# families	# population	# families	# population
Khmer Islamic	2 families	22 person(s)	2 families	22 person(s)	0 families	0 person(s)
Vietnamese	0 families	0 person(s)	0 families	0 person(s)	0 families	0 person(s)
Laos	0 families	0 person(s)	1 families	1 person(s)	0 families	0 person(s)

**Note:** Number of indigenous and minority population are additional data, so some village may not recorded.





## **SECTION C: PLANS AND PROJECTS**



## 8 Priorities and Plans

### 8.1 Priorities of Commune Councils for 2009 in the District by Sector

The District Priority Activity Matrix (DPAM) data are taken from the CDPD. The DPAM is used for the District Integration Workshop (DIW), to show what kind of projects the commune has proposed in their Commune Investment Plan (CIP) for 2009. Donors, departments and other agencies then consider which projects they want to support and which projects they are not interested in. This results in Temporary Agreements between the Commune Council and the Supporter (NGO, Department, private donor, etc), as shown in table 8.2

No.	Project Name	Sampov Lun	Angkor Ban	Ta Sda	Santepheap	Serei Mean Chey	Chrey Seima	Req.Project
		21001	21002	21003	21004	21005	21006	Total
Economic								
1	Mixed farming system training			4 training	2 Course/year	3 Course/year		4
2	Mushroom growing training	2 Course/year						1
3	Hybrid technique training	1 training						1
4	Animal vaccination request					2 Course/year	2 time	2
5	Village veterinary training		5 person					1
6	Animal raising training		1 training					1
7	Fruit trees seedling request						1000 Tree	1
8	Calf for raising request			50 Head				1
9	Fish fingerling request			25000 Head				1
10						2000 m		1
11		4 km	2 km	2500 m	1500 m		6000 m	5
12							20 place	1
13				2 place	1 place			2
14						4500 m		1
15			4 km		2000 m		6000 m	3
16						2 place		1
17		4 km		2161 m				2
18		7 place		4 place	3 place			3
19		1 place						1
20	Cash credit	100000000 Riels	200000000 Riels	300000000 Riels		50000000 Riels	600000000 Riels	6
21	Chemical fertilizer credit request	500 sac	750 can		150 sac			3
22	Insecticide credit				300 Liter			1
23	Crop seed credit	500 sac	133 sac		1800 sac		10000 Tree	5

District Data Book 2009: Development Plans and Projects

No.	Project Name	Sampov Lun	Angkor Ban	Ta Sda	Santepheap	Serei Mean Chey	Chrey Seima	Req.Project
		21001	21002	21003	21004	21005	21006	Total
24	Pig bank					10 Head		1
25	Livestock bank	19 Head			15 Head	10 Head		4
26	Market place creation/construction					1 place		1
Social								
1	Reproductive health awareness education	8 training	4 training	4 training	4 Course/year	6 Time	<sup>3</sup> Course/year	7
2	HIV/AIDS awareness education		1 training		2 Course/year	2 Course/year		3
3	HIV/AIDS infected person assistance					12 Month		1
4	Self-supported HIV/AIDS team formation					12 Month		1
5	Health/hygiene education for local people		3 training		3 Course/year	2 Course/year		3
6	Women and children health care education			2 training	3 Course/year	2 Course/year		3
7	Transmitting disease prevention education				2 Course/year			1
8	Children immunization provision	2 training	2 training				6 time	3
9	Children and women vaccination					1 Course/year		1
10	Health network creation/strengthening	2 training			2 Course/year			2
11	Chloramines distribution		376 package					1
12	VHV training						<sup>1</sup> Course/year	1
13	VHV strengthening					4 Course/year		1
14	TBA training						<sup>2</sup> Course/year	1
15	Tuberculosis treatment accessibility					2 Course/year		1
16	Mosquito nets distribution/treatment			1 Time	2 Course/year	1 Course/year	2 Time	4
17	Malaria drug treatment provision	2 training						1
18	Mosquito larvae removal treatment	260 package					7600 package	2
19	Dig ring well construction/repair			9 well				1
20	Latrine construction	60 toilet	296 toilet	100 toilet	248 toilet	200 toilet	766 toilet	6
21	Latrine construction at school		14 well					1

District Data Book 2009: Development Plans and Projects

No.	Project Name	Sampov Lun	Angkor Ban	Ta Sda	Santepheap	Serei Mean Chey	Chrey Seima	Req.Project
		21001	21002	21003	21004	21005	21006	Total
22	Sanitation education	2 training						1
23						1 place		1
24	KMeragppl;meFüa)aycMeraHTwks¥ at		376 Container					1
25	KMeragBag¼GagTwks¥attamRKYs ar	70 Jar						1
26		5 well		15 well	6 well	5 well	16 well	5
27		4 well						1
28	School renovation	2 building		2 building		5 room	5 room	4
29	School yard earth elevation			500 m3				1
30	School building	1 building		1 building	1 building		6 room	4
31	Youth moral education					1 Course/year	3 Course/year	3
32	Skill training for disabled person			21 person	21 family	19 person	18 person	4
33	Emergency relief for the poor				2 building			1
<b>NREM</b>								
1	Environmental awareness and law education						1 Course/year	1
2	Forestry law education		2 training	1 training				2
3	Organizing environment day			1 training				1
4	NREM education campaign				3 Course/year			1
5	NREM strengthening	2 training	1 training					2
6	Tree plantation project	400 Tree	5000 Tree	500 Tree	800 Tree			4
7	Forest protection strengthening		1 training			1 Course/year		2
8	Solving rubbish problems				1 Course/year			1
9	Environmental pollution reduction			1 training				1
10	Waste management education					1 Time		1
<b>Administration and Security</b>								
1	CC capacity strengthening	1 training	2 training					2
2	Good governance training		2 training					1
3	Commune office construction/renovation			1 building	1 place	1 place	1 building	4
4	Village office construction/renovation						1 building	1
5	Transportation mean requesting			1 set				1

District Data Book 2009: Development Plans and Projects

No.	Project Name	Sampov Lun	Angkor Ban	Ta Sda	Santepheap	Serei Mean Chey	Chrey Seima	Req.Project
		21001	21002	21003	21004	21005	21006	Total
6	Land law dissemination	42 person	1 training		2 Course/year			3
7	People guard activities formation/strengthening			2 training				1
8	Drug and related law education						<sup>1</sup> Course/year	1
9	Gambling control/elimination activation		2 training		2 Course/year	15 Time		3
10	Stealing elimination activation				2 Course/year			1
11	Drug business/use prevention				1 Course/year			1
12	Police post construction/renovation			1 building				1
13	Demining project	4 ha	18 ha	45 ha	410 ha	10 ha	150000 m2	6
Gender								
1	Women role in development strengthening/dissemination			1 training		1 Course/year		2
2	Gender mainstreaming among local people		2 training		2 Course/year			2
3	Gender and child rights dissemination			4 training				1
4	Women capacity building for social participation	2 training						1
5	Woman and children's rights dissemination	1 training						1
6	Women/children rights alleviation support		2 training	2 training				3
7	Women vocational training	1 training	5 person			1 Course/year		3
8	Law against domestic violence dissemination	1 training	2 training	2 training	2 Course/year	3 Time	<sup>1</sup> Course/year	6
9	Law against trafficking dissemination		2 training					1
10	Trafficking of women/children control activity strengthening	1 training			3 Course/year		<sup>1</sup> Course/year	3
11	Child protection network formation/strengthening					1 Course/year		1

**Source:** CDPD – District Priority Matrix

## 8.2 Temporary Agreements by Commune, for 2009<sup>2</sup>

At the District Integration Workshop (DIW) the Supporters (donors, agencies, private donors, NGOs, etc.) identify which projects/activities they would like to support or they put forward their own projects to be implemented in a particular commune. Once there is agreement between Commune Councils and Supporters on specific projects a **Temporary Agreement** is signed by the commune and the Supporter to show their mutual commitment to the identified projects/activities.

It is important to keep in mind that such Temporary Agreements do not necessarily result in implementation.

### 8.2.1 Temporary Agreements for 2009 as per DIW 2008 for Commune: Sampov Lun

Commune GIS	Commune	Temporary Agreements				Supporter	Funding Source	Listed in CIP befor DIW
		Project Name	Quantity	Unit	Est.Cost (K.Riels)			
Economic								
21001	Sampov Lun		4	person	400	Department of Agriculture Forestry and Fisheries		<input type="checkbox"/>
21001	Sampov Lun		240	person	300	Department of Agriculture Forestry and Fisheries		<input type="checkbox"/>
21001	Sampov Lun		1	demo	228	Department of Agriculture Forestry and Fisheries		<input type="checkbox"/>
21001	Sampov Lun		12	person	500	Department of Agriculture Forestry and Fisheries		<input type="checkbox"/>
21001	Sampov Lun		140	person	27200	Department of Agriculture Forestry and Fisheries		<input type="checkbox"/>
21001	Sampov Lun		2	demo	300	Department of Agriculture Forestry and Fisheries		<input type="checkbox"/>
21001	Sampov Lun		2	place	700	Department of Rural Development		✓
21001	Sampov Lun		1800	m	68000	Department of Rural Development		✓
21001	Sampov Lun		700	m	2000	Department of Rural Development		✓
Social								
21001	Sampov Lun		12	Month	5280	Department of Health		<input type="checkbox"/>

<sup>2</sup> Not all the data from the CDPD has been translated to English, this has resulted in some cells in the TA tables being blank.

Commune GIS	Commune	Temporary Agreements				Supporter	Funding Source	Listed in CIP before DIW
		Project Name	Quantity	Unit	Est.Cost (K.Riels)			
21001	Sampov Lun	Reproductive health awareness education	4	training	2000	Provincial Local Administration Unit		✓
<b>Gender</b>								
21001	Sampov Lun		2	person	100	Department of Women		<input type="checkbox"/>
21001	Sampov Lun		240	person	480	Department of Agriculture Forestry and Fisheries		<input type="checkbox"/>
21001	Sampov Lun		140	person	240	Department of Agriculture Forestry and Fisheries		<input type="checkbox"/>
21001	Sampov Lun		2	person	100	Department of Agriculture Forestry and Fisheries		<input type="checkbox"/>

### 8.2.2 Temporary Agreements for 2009 as per DIW 2008 for Commune: Angkor Ban

Commune GIS	Commune	Temporary Agreements				Supporter	Funding Source	Listed in CIP before DIW
		Project Name	Quantity	Unit	Est.Cost (K.Riels)			
Economic								
21002	Angkor Ban		2	demo	712	Department of Agriculture Forestry and Fisheries		<input type="checkbox"/>
21002	Angkor Ban		2000	m	56000	Department of Rural Development		✓
21002	Angkor Ban		1500	m	25000	Department of Rural Development		✓
21002	Angkor Ban		2	demo	328	Department of Agriculture Forestry and Fisheries		<input type="checkbox"/>
21002	Angkor Ban		12	person	576	Department of Agriculture Forestry and Fisheries		<input type="checkbox"/>
21002	Angkor Ban		1	demo	228	Department of Commerce		<input type="checkbox"/>
21002	Angkor Ban		5	time	3200	Department of Agriculture Forestry and Fisheries		<input type="checkbox"/>
21002	Angkor Ban		1	time	400	Department of Agriculture Forestry and Fisheries		<input type="checkbox"/>



District Data Book 2009: Development Plans and Projects

Commune GIS	Commune	Temporary Agreements				Supporter	Funding Source	Listed in CIP before DIW
		Project Name	Quantity	Unit	Est.Cost (K.Riels)			
21002	Angkor Ban		8	time	760	Department of Agriculture Forestry and Fisheries		<input type="checkbox"/>
21002	Angkor Ban		1	time	240	Department of Agriculture Forestry and Fisheries		<input type="checkbox"/>
Social								
21002	Angkor Ban		1000	person	1040	Department of Health		<input type="checkbox"/>
21002	Angkor Ban		12	Month	12000	Department of Health		<input type="checkbox"/>
21002	Angkor Ban	Reproductive health awareness education	12	Month	1040	Provincial Local Administration Unit		✓
21002	Angkor Ban	Reproductive health awareness education	12	Month	1040	Department of Health		✓
21002	Angkor Ban	Reproductive health awareness education	12	Month	1040	Department of Rural Development		✓
21002	Angkor Ban	Reproductive health awareness education	12	Month	1040	Department of Health		✓
21002	Angkor Ban		12	Month	1000	Department of Health		<input type="checkbox"/>
21002	Angkor Ban		12	Month	1000	Department of Health		<input type="checkbox"/>
21002	Angkor Ban		12	Month	1000	Department of Health		<input type="checkbox"/>
21002	Angkor Ban		12	Month	10560	Department of Health		<input type="checkbox"/>
21002	Angkor Ban		12	Month	2000	Department of Health		<input type="checkbox"/>
21002	Angkor Ban		12	Month	8000	Department of Health		<input type="checkbox"/>
21002	Angkor Ban		12	Month	1000	Department of Health		<input type="checkbox"/>
Gender								
21002	Angkor Ban		2	person	100	Department of Women		<input type="checkbox"/>

**8.2.3 Temporary Agreements for 2009 as per DIW 2008 for Commune: Ta Sda**

Commune GIS	Commune	Temporary Agreements				Supporter	Funding Source	Listed in CIP befor DIW
		Project Name	Quantity	Unit	Est.Cost (K.Riels)			
Economic								
21003	Ta Sda		1	time	400	Department of Agriculture Forestry and Fisheries		<input type="checkbox"/>
21003	Ta Sda		4	time	3200	Department of Agriculture Forestry and Fisheries		<input type="checkbox"/>
21003	Ta Sda		1	demo	228	Department of Agriculture Forestry and Fisheries		<input type="checkbox"/>
21003	Ta Sda		1	time	576	Department of Culture and Fine Arts		<input type="checkbox"/>
21003	Ta Sda		4	time	1424	Department of Agriculture Forestry and Fisheries		<input type="checkbox"/>
21003	Ta Sda		1	demo	154	Department of Agriculture Forestry and Fisheries		<input type="checkbox"/>
21003	Ta Sda		1	demo	164	Department of Agriculture Forestry and Fisheries		<input type="checkbox"/>
21003	Ta Sda		3	place	2400	Department of Rural Development		<input type="checkbox"/>
21003	Ta Sda		2500	m	60000	Department of Rural Development		✓
Social								
21003	Ta Sda		12	Month	2000	Department of Health		<input type="checkbox"/>
21003	Ta Sda		1	time	100	Department of Women		<input type="checkbox"/>
21003	Ta Sda		12	Month	10000	Department of Health		<input type="checkbox"/>
21003	Ta Sda		12	Month	12000	Department of Health		<input type="checkbox"/>
21003	Ta Sda		12	Month	10000	Department of Health		<input type="checkbox"/>
21003	Ta Sda		12	Month	10000	Department of Health		<input type="checkbox"/>
21003	Ta Sda		12	Month	10000	Department of Health		<input type="checkbox"/>
21003	Ta Sda		12	Month	10000	Department of Health		<input type="checkbox"/>
21003	Ta Sda		12	Month	8000	Department of Health		<input type="checkbox"/>
21003	Ta Sda		12	Month	10000	Department of Health		<input type="checkbox"/>
Gender								
21003	Ta Sda		4	time	480	Department of Agriculture		<input type="checkbox"/>

Commune GIS	Commune	Temporary Agreements				Supporter	Funding Source	Listed in CIP befor DIW
		Project Name	Quantity	Unit	Est.Cost (K.Riels)			
						Forestry and Fisheries		
21003	Ta Sda		4	Course/year	2000	Provincial Local Administration Unit		<input type="checkbox"/>
21003	Ta Sda		4	time	280	Department of Agriculture Forestry and Fisheries		<input type="checkbox"/>

#### 8.2.4 Temporary Agreements for 2009 as per DIW 2008 for Commune: Santepheap

Commune GIS	Commune	Temporary Agreements				Supporter	Funding Source	Listed in CIP befor DIW
		Project Name	Quantity	Unit	Est.Cost (K.Riels)			
Economic								
21004	Santepheap		1	time	400	Department of Agriculture Forestry and Fisheries		<input type="checkbox"/>
21004	Santepheap		3	demo	3200	Department of Agriculture Forestry and Fisheries		<input type="checkbox"/>
21004	Santepheap		1	demo	240	Department of Agriculture Forestry and Fisheries		<input type="checkbox"/>
21004	Santepheap		1	time	356	Department of Agriculture Forestry and Fisheries		<input type="checkbox"/>
21004	Santepheap		1	time	356	Department of Agriculture Forestry and Fisheries		<input type="checkbox"/>
21004	Santepheap		1	time	712	Department of Agriculture Forestry and Fisheries		<input type="checkbox"/>
21004	Santepheap		1	demo	164	Department of Agriculture Forestry and Fisheries		<input type="checkbox"/>
21004	Santepheap		2500	m	35000	Department of Rural Development		✓
21004	Santepheap		1	place	5200	Department of Rural Development		✓
Social								
21004	Santepheap		12	Month	2000	Department of Health		<input type="checkbox"/>
21004	Santepheap		12	Month	10000	Department of Health		<input type="checkbox"/>

Commune GIS	Commune	Temporary Agreements				Supporter	Funding Source	Listed in CIP before DIW
		Project Name	Quantity	Unit	Est.Cost (K.Riels)			
21004	Santepheap		12	Month	12000	Department of Health		<input type="checkbox"/>
21004	Santepheap		12	Month	10000	Department of Health		<input type="checkbox"/>
21004	Santepheap		12	Month	10000	Department of Health		<input type="checkbox"/>
21004	Santepheap		12	Month	10000	Department of Health		<input type="checkbox"/>
21004	Santepheap		12	Month	10000	Department of Health		<input type="checkbox"/>
21004	Santepheap		12	Month	88000	Department of Health		<input type="checkbox"/>
21004	Santepheap		12	Month	10000	Department of Health		<input type="checkbox"/>
Gender								
21004	Santepheap		50	person	480	Department of Agriculture Forestry and Fisheries		<input type="checkbox"/>
21004	Santepheap		10	person	2000	Provincial Local Administration Unit		<input type="checkbox"/>
21004	Santepheap		2	person	100	Department of Women		<input type="checkbox"/>

### 8.2.5 Temporary Agreements for 2009 as per DIW 2008 for Commune: Serei Mean Chey

Commune GIS	Commune	Temporary Agreements				Supporter	Funding Source	Listed in CIP befor DIW
		Project Name	Quantity	Unit	Est.Cost (K.Riels)			
Economic								
21005	Serei Mean Chey		1	place	3500	Department of Rural Development		✓
21005	Serei Mean Chey		1	demo	228	Department of Agriculture Forestry and Fisheries		☐
21005	Serei Mean Chey		1	time	576	Department of Agriculture Forestry and Fisheries		☐
21005	Serei Mean Chey		1	time	1424	Department of Agriculture Forestry and Fisheries		☐
21005	Serei Mean Chey		1	demo	492	Department of Agriculture Forestry and Fisheries		☐
21005	Serei Mean Chey		1	time	400	Department of Agriculture Forestry and Fisheries		☐
21005	Serei Mean		1	time	3200	Department of Agriculture		☐

District Data Book 2009: Development Plans and Projects

Commune GIS	Commune	Temporary Agreements				Supporter	Funding Source	Listed in CIP before DIW
		Project Name	Quantity	Unit	Est.Cost (K.Riels)			
	Chey					Forestry and Fisheries		
21005	Serei Mean Chey		2500	m	5000	Department of Rural Development		✓
Social								
21005	Serei Mean Chey		12	Month	8000	Department of Health		<input type="checkbox"/>
21005	Serei Mean Chey		4	Course/year	2000	Provincial Local Administration Unit		<input type="checkbox"/>
21005	Serei Mean Chey		12	Month	10000	Department of Health		<input type="checkbox"/>
21005	Serei Mean Chey		12	Month	12000	Department of Health		<input type="checkbox"/>
21005	Serei Mean Chey		12	Month	10000	Department of Health		<input type="checkbox"/>
21005	Serei Mean Chey		12	Month	10000	Department of Health		<input type="checkbox"/>
21005	Serei Mean Chey		12	Month	10000	Department of Health		<input type="checkbox"/>
21005	Serei Mean Chey		12	Month	2000	Department of Health		<input type="checkbox"/>
21005	Serei Mean Chey		12	Month	1040	Department of Health		<input type="checkbox"/>
21005	Serei Mean Chey		12	Month	1040	Department of Health		<input type="checkbox"/>
NREM								
21005	Serei Mean Chey		2	time	516	Department of Environment		<input type="checkbox"/>
Gender								
21005	Serei Mean Chey		1	time	280	Department of Agriculture Forestry and Fisheries		<input type="checkbox"/>
21005	Serei Mean Chey		1	time	480	Department of Agriculture Forestry and Fisheries		<input type="checkbox"/>
21005	Serei Mean Chey		1	time	100	Department of Women		<input type="checkbox"/>

**8.2.6 Temporary Agreements for 2009 as per DIW 2008 for Commune: Chrey Seima**

Commune GIS	Commune	Temporary Agreements				Supporter	Funding Source	Listed in CIP before DIW
		Project Name	Quantity	Unit	Est.Cost (K.Riels)			
Economic								
21006	Chrey Seima		3500	m	56000	Department of Rural Development		✓
21006	Chrey Seima		2	time	712	Department of Agriculture Forestry and Fisheries		☐
21006	Chrey Seima		2	time	576	Department of Agriculture Forestry and Fisheries		☐
21006	Chrey Seima		1	demo	228	Department of Agriculture Forestry and Fisheries		☐
21006	Chrey Seima		2	time	3200	Department of Agriculture Forestry and Fisheries		☐
21006	Chrey Seima		2	time	400	Department of Agriculture Forestry and Fisheries		☐
21006	Chrey Seima		1	demo	164	Department of Agriculture Forestry and Fisheries		☐
21006	Chrey Seima		1	place	25000	Department of Rural Development		✓
21006	Chrey Seima		3	demo	876	Department of Agriculture Forestry and Fisheries		☐
Social								
21006	Chrey Seima		12	Month	10000	Department of Health		☐
21006	Chrey Seima		4	Course/year	1200	Provincial Local Administration Unit		☐
21006	Chrey Seima		12	Month	12000	Department of Health		☐
21006	Chrey Seima		12	Month	10000	Department of Health		☐
21006	Chrey Seima		12	Month	10000	Department of Health		☐
21006	Chrey Seima		12	Month	10000	Department of Health		☐
21006	Chrey		12	Month	10000	Department of Health		☐

District Data Book 2009: Development Plans and Projects

Commune GIS	Commune	Temporary Agreements				Supporter	Funding Source	Listed in CIP before DIW
		Project Name	Quantity	Unit	Est.Cost (K.Riels)			
	Seima							
21006	Chrey Seima		12	Month	2000	Department of Health		<input type="checkbox"/>
21006	Chrey Seima		12	Month	8000	Department of Health		<input type="checkbox"/>
21006	Chrey Seima		12	Month	10000	Department of Health		<input type="checkbox"/>
21006	Chrey Seima		12	Month	5280	Department of Health		<input type="checkbox"/>
Gender								
21006	Chrey Seima		2	person	280	Department of Agriculture Forestry and Fisheries		<input type="checkbox"/>
21006	Chrey Seima		4	Course/year	800	Provincial Local Administration Unit		<input type="checkbox"/>
21006	Chrey Seima		2	training	100	Department of Women		<input type="checkbox"/>

**Source:** CDPD, District Level Detail TA resulting from DIW

**8.3 Outputs, estimated and actual costs of C/S Fund Projects between 2005 and 2008, by Commune**

Commune	Project Type	Budget Year	Output		Quantity	Unit	Unit Cost MR	
			Description	Type			Estimate	Actual
Sampov Lun	Rural Transport	2005	Gravel road	New	0.874	Km	12.09	16.59
Sampov Lun	Rural Transport	2005	Double pipe culvert	New	1	Place	2.06	16.59
Sampov Lun	Rural Transport	2005	Single pipe culvert	New	2	Place	2.45	16.59
Sampov Lun	Rural Transport	2006	Double pipe culvert	New	1	Place	2.44	23.03
Sampov Lun	Rural Transport	2006	Gravel road	New	1.17	Km	17.75	23.03
Sampov Lun	Rural Transport	2006	Single pipe culvert	New	2	Place	2.85	23.03
Sampov Lun	Rural Transport	2007	Gravel road	New	0.847	Km	11.00	20.17
Sampov Lun	Rural Transport	2007	Triple pipe culvert	New	1	Place	9.18	20.17
Sampov Lun	Rural Transport	2008	Gravel road	New	0.82	Km	19.25	21.88
Sampov Lun	Rural Transport	2008	Single pipe culvert	New	1	Place	2.63	21.88
Angkor Ban	Rural Transport	2005	Gravel road	New	0.736	Km	10.95	16.68
Angkor Ban	Rural Transport	2005	Double pipe culvert	New	1	Place	2.06	16.68
Angkor Ban	Rural Transport	2005	Single pipe culvert	New	3	Place	3.67	16.68
Angkor Ban	Rural Transport	2006	Single pipe culvert	New	2	Place	2.85	23.38
Angkor Ban	Rural Transport	2006	Gravel road	New	1.342	Km	20.54	23.38
Angkor Ban	Rural Transport	2007	Gravel road	New	0.868	Km	10.90	20.71
Angkor Ban	Rural Transport	2007	Double pipe culvert	New	2	Place	9.81	20.71
Angkor Ban	Rural Transport	2008	Gravel road	Repair	1.083	Km	12.01	22.17
Angkor Ban	Rural Transport	2008	Single pipe culvert	New	2	Place	10.17	22.17
Ta Sda	Rural Transport	2005	Single pipe culvert	New	3	Place	4.12	18.05
Ta Sda	Rural Transport	2005	Gravel road	New	0.962	Km	13.93	18.05
Ta Sda	Rural Transport	2006	Gravel road	New	3.148	Km	23.63	23.63
Ta Sda	Rural Transport	2007	Gravel road	New	1.303	Km	18.26	23.61
Ta Sda	Rural Transport	2007	Single pipe culvert	New	3	Place	5.35	23.61
Ta Sda	Rural Transport	2008	Gravel road	New	0.698	Km	10.18	37.47
Ta Sda	Rural Transport	2008	Double pipe culvert	New	1	Place	6.02	37.47
Ta Sda	Rural Transport	2008	Triple pipe culvert	New	1	Place	11.95	37.47
Ta Sda	Rural Transport	2008	Single pipe culvert	New	2	Place	3.98	37.47
Ta Sda	Rural Transport	2008	Gravel road	Repair	0.189	Km	5.33	37.47
Santepheap	Rural Transport	2005	Single pipe culvert	New	2	Place	2.51	19.39
Santepheap	Rural Transport	2005	Gravel road	New	1.367	Km	16.88	19.39
Santepheap	Rural Transport	2006	Gravel road	New	1.35	Km	20.82	25.68
Santepheap	Rural Transport	2006	Double pipe culvert	New	2	Place	4.86	25.68



Commune	Project Type	Budget Year	Output		Quantity	Unit	Unit Cost MR	
			Description	Type			Estimate	Actual
Santepheap	Rural Transport	2007	Gravel road	New	1.295	Km	17.98	25.74
Santepheap	Rural Transport	2007	Single pipe culvert	New	2	Place	3.57	25.74
Santepheap	Rural Transport	2007	Double pipe culvert	New	1	Place	4.20	25.74
Santepheap	Rural Transport	2008	Single pipe culvert	New	2	Place	4.78	27.16
Santepheap	Rural Transport	2008	Gravel road	New	0.851	Km	22.38	27.16
Serei Mean Chey	Rural Transport	2005	Gravel road	New	1.2	Km	15.09	19.66
Serei Mean Chey	Rural Transport	2005	Single pipe culvert	New	2	Place	2.48	19.66
Serei Mean Chey	Rural Transport	2005	Double pipe culvert	New	1	Place	2.09	19.66
Serei Mean Chey	Rural Transport	2006	Single pipe culvert	New	2	Place	2.85	28.32
Serei Mean Chey	Rural Transport	2006	Gravel road	New	1.768	Km	25.47	28.32
Serei Mean Chey	Rural Transport	2007	Single pipe culvert	New	3	Place	5.31	26.88
Serei Mean Chey	Rural Transport	2007	Gravel road	New	1.546	Km	21.58	26.88
Serei Mean Chey	Rural Transport	2008	Gravel road	New	0.943	Km	12.14	16.11
Serei Mean Chey	Rural Transport	2008	Gravel road	New	1.187	Km	28.74	28.74
Serei Mean Chey	Rural Transport	2008	Single pipe culvert	New	2	Place	3.98	16.11
Chrey Seima	Rural Transport	2005	Gravel road	New	0.995	Km	12.87	18.31
Chrey Seima	Rural Transport	2005	Single pipe culvert	New	1	Place	1.30	18.31
Chrey Seima	Rural Transport	2005	Double pipe culvert	New	2	Place	4.14	18.31
Chrey Seima	Rural Transport	2006	Single pipe culvert	New	2	Place	2.85	26.22
Chrey Seima	Rural Transport	2006	Gravel road	New	2.196	Km	23.37	26.22
Chrey Seima	Rural Transport	2007	Gravel road	New	1.213	Km	18.34	27.92
Chrey Seima	Rural Transport	2007	Double pipe culvert	New	3	Place	9.59	27.92

Source: PID

#### 8.4 Total Expenditure on C/S Fund Projects by sector and commune between 2005 and 2008

Sector	Total Cost in Million Riels					
	Sampov Lun	Angkor Ban	Ta Sda	Santepheap	Serei Mean Chey	Chrey Seima
Rural Transport	81.68	60.77	79.15	97.97	92.83	72.45

Source: PID

**8.5 Actual 2009 C/S Fund projects by Commune**

Commune	Project Type	Project Output		Quantity	Unit	Fund Source (Riels)		
		Description	Type			Total	C/S	Local Contribution
Sampov Lun	Rural Transport	Natural Gravel road	New	0.527	km	28,518,434	27,688,534	829,900
Sampov Lun	Rural Transport	Double pipe culvert 0.8m diameter	New	1	Place	28,518,434	27,688,534	829,900
Sampov Lun	Rural Transport	Triple pipe culvert 1.0m diameter	New	1	Place	28,518,434	27,688,534	829,900
Ta Sda	Rural Transport	Natural Gravel road	Repair	1.277	km	31,875,000	30,288,000	1,587,000
Ta Sda	Rural Transport	Double pipe culvert 0.6m diameter	New	1	Place	31,875,000	30,288,000	1,587,000
Serei Mean Chey	Rural Transport	Natural Gravel road	New	1.095	km	39,409,000	38,261,100	1,147,900
Serei Mean Chey	Rural Transport	Single pipe culvert 0.6m diameter	New	1	Place	39,409,000	38,261,100	1,147,900
Serei Mean Chey	Rural Transport	Double pipe culvert 0.6m diameter	New	1	Place	39,409,000	38,261,100	1,147,900
Serei Mean Chey	Rural Transport	Double pipe culvert 0.8m diameter	New	1	Place	39,409,000	38,261,100	1,147,900
Chrey Seima	Rural Transport	Natural Gravel road	Repair	2.872	km	67,308,600	66,247,000	1,061,600
Chrey Seima	Rural Transport	Double pipe culvert 1.0m diameter	New	1	Place	67,308,600	66,247,000	1,061,600
Chrey Seima	Rural Transport	Double pipe culvert 0.8m diameter	New	2	Place	67,308,600	66,247,000	1,061,600
Chrey Seima	Rural Transport	Single pipe culvert 0.6m diameter	New	1	Place	67,308,600	66,247,000	1,061,600

*Source: PID*

## 9 District level Projects from 2006 to 2009

District Initiative Projects (DIPs) are funded by Danida, DFID and PSDD (UNDP, DFID and SIDA).

### **Funding for 2006-2008**

Between 2006 and 2008 there were 14 provinces funded by PSDD and 10 by Danida and DFID. The list of provinces and who funded these is below

#### *Danida and DFID funded DIPs:*

Kampong Cham	Kampong Speu	Koh Kong	Kratie	Monduliri
Pursat	Ratanakiri	Siem Reap	Sihanoukville	Kep

#### *PSDD funded DIPs:*

Banteay Meanchey	Battambang	Kampong Chhnang	Kandal	Phnom Penh
Prey Veng	Svay Rieng	Takeo	Kampong Thom	Preah Vihear
Stung Treng	Kampot	Oddar Meanchey	Pailin	

### **Funding for 2009**

In 2009 there was a change to the number of provinces funded by the two streams. Danida and DFID were still funding the same 10 provinces they had been funding the previous three years, but two more provinces were added *Kampong Thom and Kampot*. Now PSDD funds 12 provinces and Danida and DFID fund 12.

## **9.1 District Initiative Infrastructure Projects from 2006 to 2009**

### **9.1.1 District Initiative Infrastructure Projects for 2006 to 2008**

*No District Initiative Infrastructure Projects were implemented in this district for 2006-2008*

### **9.1.2 District Initiative Infrastructure Projects in 2009**

*No District Initiative Infrastructure Projects have been implemented in this district for 2009*

## **9.2 District Initiative Service Projects from 2006 to 2009**

### **9.2.1 District Initiative Service Projects for 2006 to 2008**

*No District Initiative Service Projects were implemented in this district for 2006-2008*

### **9.2.2 District Initiative Service Projects in 2009**

*No District Initiative Service Projects have been implemented in this district for 2009*

### **9.3 Inter Commune Council Projects in 2008 and 2009**

#### **9.3.1 ICC Projects in 2008**

*No ICC projects in this district at this time*

#### **9.3.2 ICC Projects in 2009**

*No ICC projects in this district at this time*

**Source:** ICC project, Ministry of Interior (DoLA), -UNDP project for Local Governance – DDLG

### **9.4 Other Projects in 2008 and 2009**

#### **9.4.1 RPRP**

*There are no RPRP projects being implemented in this district or province at this time. The RPRP is only being implemented in Svay Rieng and Prey Veng*

##### **9.4.1.1 RPRP Projects from 2006 to 2008**

*No RPRP projects in this district at this time*

##### **9.4.1.2 RPRP Projects in 2009**

*No RPRP projects in this district at this time*

#### **9.4.2 Seth Korma**

##### **9.4.2.1 Seth Korma 2007**

*There are no Seth Korma projects being implemented in this district or province at this time.*

**Source:** UNICEF

##### **9.4.2.2 Seth Korma 2008**

*There are no Seth Korma projects being implemented in this district or province at this time.*

**Source:** UNICEF

##### **9.4.2.3 Seth Korma 2009**

*There are no Seth Korma projects being implemented in this district or province at this time.*

**Source:** UNICEF

## **SECTION D: SERVICES AND ORGANIZATIONS**



## 10 Infrastructure

### 10.1 Length of and Expenditure on Roads in 2008, by District

Roads	BAT	Banan	Thmor Kol	Battambang	Bovel	Ek Phnom	Moung Ressey	Rattanak Mondol
Length of paved road in the district (km)	233	21	40	62	0	17	58	10
Length of unpaved roads in the district (km)	8,048	418.958	293	213	441	134	1,918	195
Amount spent on construction of roads in 2008 (\$)	1,956,677	48187	31,071	1,373,571	141,863	10,114	160,600	28,292
Amount spent on repair and rehabilitation of roads in 2008 (\$)	3,399,766	35833	35,512	2,535,287	53,750	95,398	100,900	14,976
Continue...								
Roads	BAT	Sangker	Samlot	Sampov Loun	Phnom Prek	Kamrieng	Koh Kralor	Ruk Kakiri
Length of paved road in the district (km)	233	23	0	1	0	0	0	0
Length of unpaved roads in the district (km)	8,048	434	1,541	174	189	1,555	55	487
Amount spent on construction of roads in 2008 (\$)	1,956,677	5,650	3,558	29,737	93,931	0	0	30,103
Amount spent on repair and rehabilitation of roads in 2008 (\$)	3,399,766	50,950	159,750	80,000	86,585	80,000	58,325	12,500

**Note 1:** Please note that these data are not necessarily complete or correct. The data are derived from government agencies at provincial and district level which used different recording systems, did not always have complete data or were, sometimes, less than willing to share their data.

**Note 2:** Please be aware that these data are incomplete due to the fact that the amounts for the construction, repair and rehabilitation recorded reflect only funds provided by the government, not the contributions by any other parties.

**10.2 Scale of and Expenditure on Irrigation in 2008, by District**

<b>Irrigation</b>	<b>BAT</b>	<b>Banan</b>	<b>Thmor Kol</b>	<b>Battambang</b>	<b>Bovel</b>	<b>Ek Phnom</b>	<b>Moung Ressey</b>	<b>Rattanak Mondol</b>
Number of irrigation schemes operating in 2008	337	88	118	2	44	10	23	n/a
Total nr of hectares under irrigation in dry season 2008	17,484	2442	7,849	50	999	2,100	2,633	n/a
Total funds spent in 2008 on construction of irrigation systems (\$)	287,438	n/a	36,974	8,452	107,000	n/a	22,012	n/a
Total funds spent in 2008 on rehabilitation/repair of irrigation systems (\$)	193,871	n/a	26,495	4,376	47,000	n/a	72,000	n/a
Total funds spent in 2008 on operation and maintenance (\$)	13,953	6571	5,382	0	2,000	n/a	n/a	n/a
Continue...								
<b>Irrigation</b>	<b>BAT</b>	<b>Sangker</b>	<b>Samlot</b>	<b>Sampov Loun</b>	<b>Phnom Prek</b>	<b>Kamrieng</b>	<b>Koh Kralor</b>	<b>Ruk Kakiri</b>
Number of irrigation schemes operating in 2008	337	39	1	2	1	0	1	8
Total nr of hectares under irrigation in dry season 2008	17,484	1,170	115	100	20	0	n/a	6
Total funds spent in 2008 on construction of irrigation systems (\$)	287,438	113,000	n/a	n/a	n/a	0	n/a	n/a
Total funds spent in 2008 on rehabilitation/repair of irrigation systems (\$)	193,871	n/a	n/a	n/a	n/a	0	n/a	44,000
Total funds spent in 2008 on operation and maintenance (\$)	13,953	n/a	n/a	n/a	n/a	0	n/a	n/a

**Note 1:** Please note that these data are not necessarily complete or correct. The data are derived from government agencies at provincial and district level which used different recording systems, did not always have complete data or were, sometimes, less than willing to share their data.

**Note 2:** Please be aware that the data above are incomplete as these only reflect funds provided by the government, not the contributions by farmers or other parties.



**10.3 Power Supply in 2008, by District**

Electricity	BAT	Banan	Thmor Kol	Battambang	Bovel	Ek Phnom	Moung Ressey	Rattanak Mondol
Total number of electricity connections to households	44,911	1,986	4,076	17,311	4,400	2,197	2,579	688
Total number of electricity connections to agencies, companies, organizations	1,335	3	15	1,200	5	9	14	5
Total volume in KWh of electricity consumed last in 2008	37,887,455	67619	257,630	29,022,560	207,360	293,616	169,287	103,661
Total amount collected from users for consumed electricity (\$)	8,632,022	71260	194,314	7,278,404	108,916	20,297	83,331	390,912
Per capita electricity consumption in 2008 in Kwh	3,375	8.316	254	202	12	96	17	19
Continue...								
Electricity	BAT	Sangker	Samlot	Sampov Loun	Phnom Prek	Kamrieng	Koh Kralor	Ruk Kakiri
Total number of electricity connections to households	44,911	1,330	150	2,804	2,853	4,312	95	130
Total number of electricity connections to agencies, companies, organizations	1,335	11	3	26	21	20	2	1
Total volume in KWh of electricity consumed last in 2008	37,887,455	445,080	90	2,016,878	1,516,188	3,771,886	0	15,600
Total amount collected from users for consumed electricity (\$)	8,632,022	4,530	8,100	72,000	294,040	103,968	0	1,950
Per capita electricity consumption in 2008 in Kwh	3,375	175	48	1,726	349	180	0	288

**Note 1:** Please note that these data are not necessarily complete or correct. The data are derived from government agencies at provincial and district level which used different recording systems, did not always have complete data or were, sometimes, less than willing to share their data.

**Note 2:** These data only record electricity provided by electricity companies and does not include homes powered by generators or batteries (for this information see Section B: General Profile, Part 1: General Information; table 1.3.1 and chart 1.3.4).

**Note 3:** In most provinces electricity is only provided through town-based networks

**Note 4:** Per capita consumption is calculated by dividing the total volume of electricity produced in 2008 by the number of people living in each district as per the 2008 census (for the provincial data it is calculated against the number of people living in the province)

## 11 Health Facilities

*Please note that the Operational District (health) boundaries are different to the administrative district boundaries. Therefore the data provided here shows the facilities, staff, NGOs etc in each Operational District within the province NOT the administrative district.*

### Acronyms

<b>Com Cov</b>	Commune Covered	<b>MW2</b>	Secondary Midwives
<b>CPA</b>	Complementary Package of Activities	<b>NU1</b>	Primary Nurse
<b>Dr</b>	Doctor	<b>NU2</b>	Secondary Nurse
<b>FDH</b>	Former District Hospital	<b>OD</b>	Operational District
<b>HC</b>	Health Center	<b>Others</b>	Other Staff
<b>HC (NB)</b>	Health Center no building	<b>PHD</b>	Provincial Health Department
<b>HP</b>	Health Post	<b>Pop 04-05</b>	Population Covered 2004 or 2005
<b>MA</b>	Medical Assistant	<b>RH</b>	Referral Hospital
<b>MPA</b>	Minimum Package of Activities	<b>Vil Cov</b>	Village Covered
<b>MW1</b>	Primary Midwives	<b>VIL-HC</b>	Distance from Village to Health Center

### 11.1 Health Facilities in the Province, by Operational District

<b>Battambang</b>	<b>OD</b>	<b>RH</b>	<b>HC</b>	<b>HP</b>
Bat Dambang	1	1	22	
Mong Ruessei	1	1	13	
Sampov Luon	1	1	8	
Sangkae	1		15	
Thmor Koul	1	1	17	
<b>Total</b>	<b>5</b>	<b>4</b>	<b>75</b>	<b>0</b>

### 11.2 Health Facilities and Staff in the province, by Operational District

This table shows health facilities, staff and coverage of health facilities in each operational district.

No	Facility Name	Type	Class	Dr	Ma	Nu2	Nu1	Mw2	Mw1	Others	Com Cov	Vil Cov	Pop. 04-05
<b>Thmor Koul</b>													
1	Ampil Pram Daeum	HC	MPA	0	0	2	2	0	0	2	1	8	9,001
2	Anlong Run	HC	MPA	0	0	1	3	0	0	2	1	5	4,489
3	Bansay Traeng	HC	MPA	0	0	3	1	1	1	0	1	8	9,283
4	Bavel I	FDH	CPA+MPA	2	0	6	3	3	0	9	1	10	12,590
5	Bavel II	HC	MPA	0	0	1	4	1	1	2	0	9	13,329
6	Boeng Pring	HC	MPA	0	0	2	1	0	1	1	1	4	9,570
7	Chrouy Sdau	HC	MPA	0	0	1	0	0	1	3	1	3	9,644
8	Kdol Ta Hen	HC	MPA	0	0	1	4	0	0	2	1	13	10,013
9	Khleang Meas	HC	MPA	0	0	1	0	0	0	5	0	14	10,628
10	Khnach Romeas	HC	MPA	0	0	1	3	0	3	2	1	8	11,791
11	Kouk Khmum	HC	MPA	0	0	2	2	1	0	1	1	8	12,407
12	Lvea	HC	MPA	0	0	1	2	1	0	4	1	12	10,965
13	Ou Ta Ki	HC	MPA	0	0	0	2	3	0	2	1	8	16,186
14	Prey Khpos	HC	MPA	0	0	1	2	2	0	3	1	9	11,067
15	Rung Chrey	HC	MPA	0	0	2	1	1	0	1	1	7	11,469
16	Ta Meun	HC	None MPA	0	0	1	1	0	0	2	1	10	15,748
<b>Total:</b>				<b>2</b>	<b>0</b>	<b>26</b>	<b>31</b>	<b>13</b>	<b>7</b>	<b>41</b>	<b>14</b>	<b>136</b>	<b>178,180</b>
<b>Mong Ruessei</b>													
1	Ta Pung	HC	MPA	0	0	3	2	2	0	0	1	7	14,285
2	Chrey	HC	MPA	0	0	1	1	0	0	4	1	8	11,739
3	Kakaoh	HC	MPA	0	0	0	1	0	1	4	1	7	10,830
4	Kaos Kralor	HC(NB)	None	0	0	0	3	2	2	0	5	41	15,742
5	Kear	HC	None MPA	0	0	0	2	1	1	3	1	11	16,294
6	Moung	HC	MPA	0	0	1	1	0	0	4	1	14	14,210
7	Preaek Chik	HC	None MPA	0	0	0	2	1	3	1	1	10	12,222
8	Prey Svay	HC	MPA	0	0	0	3	0	1	4	1	9	13,196
9	Prey Touch	HC	MPA	0	0	1	3	0	2	0	1	6	9,917
10	Prey Tralach	HC	MPA	0	0	0	3	0	1	3	1	14	20,174
11	Robas Mongkol	HC	MPA	0	0	0	3	0	2	2	1	12	11,324
12	Russei Krang	HC	MPA	0	0	2	3	0	1	2	1	10	14,015

District Data Book 2009: Services and Organizations

No	Facility Name	Type	Class	Dr	Ma	Nu2	Nu1	Mw2	Mw1	Others	Com Cov	Vil Cov	Pop. 04-05
13	Ta Loas	HC	MPA	0	0	1	2	2	2	1	1	9	8,551
<b>Total:</b>				<b>0</b>	<b>0</b>	<b>9</b>	<b>29</b>	<b>8</b>	<b>16</b>	<b>28</b>	<b>17</b>	<b>158</b>	<b>172,499</b>
<b>Sampov Luon</b>													
1	Thipakdei	HC	MPA	0	0	1	3	0	3	1	1	11	8,216
2	Angkor Ban	HC	None MPA	0	0	4	0	0	2	1	4	17	7,342
3	Barang Thleak	HC	MPA	0	1	2	3	1	0	2	3	15	9,228
4	Chak Krei	HC	MPA	0	1	0	0	1	1	2	1	8	8,207
5	Kamrieng	HC	None MPA	0	1	0	1	0	1	4	3	12	7,124
6	Pich Chenda	HC	MPA	0	0	0	0	0	0	0	2	15	11,638
7	Serei Mean Chey	HC	MPA	0	1	3	2	0	2	1	3	11	11,264
8	Ta Krey	HC	MPA	0	2	2	0	0	1	2	2	10	8,383
<b>Total:</b>				<b>0</b>	<b>6</b>	<b>12</b>	<b>9</b>	<b>2</b>	<b>10</b>	<b>13</b>	<b>19</b>	<b>99</b>	<b>71,402</b>
<b>Bat Dambang</b>													
1	Trang	FDH	CPA+MPA	1	2	4	2	0	1	11	4	25	16,973
2	Chaeng Mean Chey	HC	None MPA	0	0	0	1	0	1	2	1	7	6,849
3	Chamkar Samraong	FDH	CPA+MPA	0	0	4	3	5	1	1	2	11	30,612
4	Chamlang Kouy	HC	MPA	0	0	0	0	0	0	12	2	12	4,640
5	Chheu Teal	HC	MPA	0	0	4	3	2	1	0	2	14	14,767
6	Chrey	HC	MPA	0	0	1	3	0	1	2	1	10	13,839
7	Kampong Lpov	HC	MPA	0	0	0	0	0	0	15	1	9	3,133
8	Kantueu II	FDH	MPA	0	0	5	5	1	2	5	4	23	17,734
9	Kdol	HC	MPA	0	0	3	1	4	0	0	1	7	8,399
10	Ou Mal	HC	MPA	0	0	3	1	2	1	0	1	10	9,834
11	Phlov Meas	HC	MPA	0	0	0	0	0	0	3	1	7	3,084
12	Phnum Sampov	HC	MPA	0	0	1	2	4	1	1	1	10	13,026
13	Rottanak	HC	MPA	0	0	3	1	4	0	0	2	12	19,708
14	Sam Lot	HC	MPA	0	0	0	0	0	0	15	2	12	7,479
15	Sdau	FDH	CPA+MPA	0	0	6	3	3	4	3	2	23	17,645
16	Sla Kaet	HC	MPA	0	0	3	1	4	0	0	1	3	7,903
17	Snoeng	HC	MPA	0	0	1	3	0	1	1	1	11	16,481
18	Svay Pao	HC	MPA	1	1	3	3	13	4	0	2	12	32,995
19	Ta Kream	HC	MPA	0	0	2	2	2	0	1	1	11	17,330
20	Ta Sanh	FDH	CPA+MPA	0	0	0	0	0	0	44	2	16	7,596
21	Traeng	HC	MPA	0	0	1	2	0	1	1	1	7	8,417

No	Facility Name	Type	Class	Dr	Ma	Nu2	Nu1	Mw2	Mw1	Others	Com Cov	Vil Cov	Pop. 04-05
22	Tuol Ta Aek	HC	MPA	0	0	5	0	3	2	0	1	5	17,291
<b>Total:</b>				<b>2</b>	<b>3</b>	<b>49</b>	<b>36</b>	<b>47</b>	<b>21</b>	<b>117</b>	<b>36</b>	<b>257</b>	<b>295,735</b>
<b>Sangkae</b>													
1	Voat Kor	HC	MPA	0	0	1	1	1	0	0	1	6	14,651
2	Anlong Vil	FDH	CPA+MPA	1	1	7	6	0	5	1	1	9	15,870
3	Kampong Preah	HC	MPA	0	0	2	2	0	1	1	1	6	8,907
4	Kampong Preang	HC	MPA	0	0	0	1	1	0	1	1	6	8,746
5	Koh Chiveang	HC	MPA	0	0	1	1	0	1	1	1	5	9,349
6	Ou Dambang I	HC	MPA	0	1	2	5	1	2	0	1	6	13,571
7	Ou Dambang II	HC	MPA	0	0	2	2	0	1	1	1	6	11,620
8	Peam Aek	HC	MPA	0	0	4	2	3	2	0	1	8	12,869
9	Preaek Luong	HC	MPA	0	1	4	3	2	1	0	2	10	13,479
10	Preaek Norint	FDH	CPA+MPA	0	1	9	9	8	0	2	1	10	12,367
11	Prey Chas	HC	None MPA	0	0	0	0	0	0	0	1	5	4,034
12	Reang Kerei	HC	None MPA	0	0	0	1	0	2	0	1	9	7,156
13	Roka	HC	MPA	0	0	0	2	0	1	1	1	6	7,985
14	Samraong Knong	HC	MPA	0	1	4	2	2	1	0	2	7	14,485
15	Ta Pon	HC	MPA	0	0	1	1	0	2	0	1	5	12,934
<b>Total:</b>				<b>1</b>	<b>5</b>	<b>37</b>	<b>38</b>	<b>18</b>	<b>19</b>	<b>8</b>	<b>17</b>	<b>104</b>	<b>168,023</b>
<b>Total All</b>				<b>5</b>	<b>14</b>	<b>133</b>	<b>143</b>	<b>88</b>	<b>73</b>	<b>207</b>	<b>103</b>	<b>754</b>	<b>885,839</b>

Source: MEDiCAM – Infrastructure - ([http://www.medicam-cambodia.org/hsi/health\\_system/srch/index.asp?cboLcn=6&cmdSearch=Search&cboCHName=&cboType=](http://www.medicam-cambodia.org/hsi/health_system/srch/index.asp?cboLcn=6&cmdSearch=Search&cboCHName=&cboType=))

### 11.3 Deliveries in 2007 in the Province, by Operational District

OD	Deliveries	Deliveries at home		Deliveries	Total deliveries	Total deliveries
	at HC	By Health Staff	ByTBAs	at RH	by Health Staff	by health staff and TBAs
Thma Koul	281	2041	1913	163	2485	4398
Mong Russei	279	832	1433	599	1710	3143
Sampov Luon	161	333	1169	167	661	1830
Battambang	603	2869	1455	1728	5200	6655
Sangkae	525	1344	1005	0	1869	2874
<i>Sub-total</i>	<i>1849</i>	<i>7419</i>	<i>6975</i>	<i>2657</i>	<i>11925</i>	<i>18900</i>

Source: MoH, Annual Statistics 2007

## 12 Education<sup>3</sup>

### 12.1 Schools, Classes, Students, Staff, for for all levels, for 2007/2008 by District

District	Number of Schools	Disadv. Schools	Number of Classes	Classes in Pagoda	Enrollment		Repeaters		Teaching Staff		Non-Teaching Staff		Total Staff	
					Total	Girl	Total	Girl	Total	Female	Total	Female	Total	Female
Banan	88	1	608	0	22,894	11,072	2,539	1,095	569	267	170	34	739	301
Battambang	76	0	1,048	2	40,597	19,061	2,324	797	1,506	950	235	114	1,741	1,064
Bavel	70	0	623	0	26,085	12,498	2,724	1,142	339	142	175	39	514	181
Ek Phnom	62	0	456	0	14,485	7,285	1,325	542	547	342	157	47	704	389
Kamrieng	49	2	350	0	13,206	6,139	1,087	480	243	110	63	16	306	126
Koah Kralar	39	2	282	0	11,793	5,527	661	295	122	39	57	20	179	59
Maung Russey	110	4	935	10	39,146	18,443	3,927	1,668	603	234	228	48	831	282
Phnom Preuk	28	1	254	0	11,138	5,261	1,181	570	161	64	39	7	200	71
Ratanak Mondul	45	3	286	0	10,332	4,864	971	406	162	79	87	19	249	98
Samlaut	47	0	315	0	10,545	4,912	909	381	203	61	58	10	261	71
Sampeuv Loun	15	1	148	0	6,428	2,963	298	148	119	39	44	2	163	41
Sangker	78	2	764	0	28,643	14,122	2,556	1,067	823	461	259	90	1,082	551
Thmar Kaul	68	3	682	4	29,785	14,557	2,352	959	678	362	170	40	848	402
<b>Whole Province</b>	775	19	6,751	16	265,077	126,704	22,854	9,550	6,075	3,150	1,742	486	7,817	3,636
- Urban Area	76	0	1,048	2	40,597	19,061	2,324	797	1,506	950	235	114	1,741	1,064
- Rural Area	699	19	5,703	14	224,480	107,643	20,530	8,753	4,569	2,200	1,507	372	6,076	2,572

### 12.2 Characteristics of Schools and School Principals for 2007/2008 by Commune

Commune	Number of Schools				2 - Shift	Floating	Schools	Attached	Schools Without			Characteristics of School Principals (Incharge)			
	Pre-Sch	Primary	College	Lycee	Schools	Schools	in Pagoda	Pre-Sch	Water Sup.	Latrine		Avg. Age	Avg. Service	U.Sec+ Ed.	Female
Sampov Lun	0	1	0	0	1	0	0	0	1	1		54.6	13.0	0	0
Angkor Ban	0	1	0	0	1	0	0	0	0			34.9	14.0	0	0
Ta Sda	0	3	2	1	5	0	0	0	3	2		41.5	15.2	3	0
Santepheap	0	2	0	0	2	0	0	0	0			45.4	11.5	1	0
Serei Mean Chey	0	2	1	0	3	0	0	0	0			42.7	16.0	1	0
Chrey Seima	0	2	0	0	2	0	0	0	1	1		55.2	17.0	0	0

<sup>3</sup> All the data for section 12 comes from the Ministry of Education, Youth and Sport (MoEYS)

**12.3 Enrolment by Level of Education, 2006/2007 by Commune**

Commune	School	Pre school		Primary School		Lower Secondary School		Upper Secondary School		Enrolment	
		Total	Female	Total	Female	Total	Female	Total	Female	Total	Female
Sampov Lun	1	0	0	278	122	0	0	0	0	278	122
Angkor Ban	1	0	0	430	202	0	0	0	0	430	202
Ta Sda	5	0	0	1070	484	705	308	212	64	1987	856
Santepheap	2	0	0	1616	756	0	0	0	0	1616	756
Serei Mean Chey	3	0	0	1252	605	299	133	0	0	1551	738
Chrey Seima	2	0	0	767	370	0	0	0	0	767	370

**12.4 Enrolment by Level of Education, 2007/2008 by Commune**

Commune	School	Pre school		Primary School		Lower Secondary School		Upper Secondary School		Enrolment	
		Total	Female	Total	Female	Total	Female	Total	Female	Total	Female
Sampov Lun	1	0	0	313	165	0	0	0		313	165
Angkor Ban	1	0	0	397	195	0	0	0		397	195
Ta Sda	6	0	0	903	411	740	295	308	100	1951	806
Santepheap	2	0	0	1496	705	0	0	0		1496	705
Serei Mean Chey	3	0	0	1274	617	331	160	0		1605	777
Chrey Seima	2	0	0	666	315	0	0	0		666	315

**12.5 Aspects of Enrolment for 2007/2008 by Commune**

Commune	% Repeaters (Total)			% Over-age Enrollment (Total)			% Repeaters (Girl)			% Over-age Enrollment (Girl)		
	Primary	L.Sec.	U.Sec.	Primary	L.Sec.	U.Sec.	Primary	L.Sec.	U.Sec.	Primary	L.Sec.	U.Sec.
Sampov Lun	5.1	0.0	0.0	40.3	0.0	0.0	6.1	0.0	0.0	38.2	0.0	0.0
Angkor Ban	6.0	0.0	0.0	39.0	0.0	0.0	6.2	0.0	0.0	42.6	0.0	0.0
Ta Sda	2.7	0.3	2.6	32.1	61.4	54.2	2.7	0.0	1.0	32.4	59.3	40.0
Santepheap	5.1	0.0	0.0	29.6	0.0	0.0	5.1	0.0	0.0	26.4	0.0	0.0
Serei Mean Chey	7.6	0.0	0.0	24.5	67.4	0.0	7.6	0.0	0.0	24.5	66.9	0.0
Chrey Seima	7.7	0.0	0.0	32.7	0.0	0.0	9.8	0.0	0.0	28.6	0.0	0.0

**12.6 School Buildings for all schools in the District for 2007/2008, by Commune**

Commune	Total Number of		Concrete/Brick Structure		Wooden Structure		Bamboo Structure		New Buildings		Buildings Without Good		
	Buildings	Rooms	Buildings	Rooms	Buildings	Rooms	Buildings	Rooms	Repaired	Constructed	Floor	Roof	Wall
Sampov Lun	3	11	2	10	0	0	1	1	0	0	2	2	2
Angkor Ban	1	6	1	6	0	0	0	0	0	0	0	0	0
Ta Sda	8	44	6	32	2	12	0	0	0	1	1	1	2
Santepheap	4	20	4	20	0	0	0	0	0	0	1	0	1
Serei Mean Chey	5	25	4	20	1	5	0	0	0	0	0	0	0
Chrey Seima	2	9	2	9	0	0	0	0	0	0	1	0	1

**12.7 Conditions of Classrooms and Existence of Separate School Office and Library, by Commune**

Commune	Number of Class rooms	Number of Classrooms			Classrooms Without Good			Number of Furniture needed				Schools with Separate	
		in Pagoda	New Repaired	New Constr.	Floor	Roof	Wall	Desks	Chairs	Black-board	Teacher Table	Office	Library
Sampov Lun	7	0	0	0	10	10	10	72	72	5	4	0	0
Angkor Ban	5	0	0	0	0	0	0	0	0	0	0	1	0
Ta Sda	31	0	0	5	3	6	9	16	16	4	3	3	0
Santepheap	18	0	0	0	5	0	5	0	0	0	0	1	1
Serei Mean Chey	24	0	0	0	0	0	0	0	0	0	0	1	0
Chrey Seima	8	0	0	0	5	0	5	0	0	0	0	0	0

**12.8 Community Participation and Financing across all schools in the District for 2007/2008 by Commune**

Commune	Parent Association				Comm. Teachers	Teaching Monks	PAP Fund (Riel)		Number of Schools Obtaining Funds from				
	Exists	Held Meet	Total	Female			per Student	per School	Sch. Income	Community	Gvt. For building	Abroad	IOs/NGOs
Sampov Lun	1	1	3	1	0	0	9,989	2,777,000	0	0	0	0	0
Angkor Ban	1	1	3	1	0	0	7,842	3,372,000	0	0	0	0	0
Ta Sda	6	6	3	1	0	0	12,834	5,100,360	0	0	0	0	0
Santepheap	2	2	4	1	0	0	8,171	6,602,500	0	0	0	0	0
Serei Mean Chey	3	3	2	1	0	0	8,442	4,364,533	0	0	0	0	0
Chrey Seima	2	2	3	2	0	0	9,404	3,606,500	0	0	0	0	0



**12.9 Percentage Student Flow Rates and Graduation by level 2006/2007, by Commune**

Commune	Primary Level (Grades 1-6)			Lower Secondary Level (Grades 7-9)			Upper Secondary Level (Grades 10-12)			Successful Candidates		
	Promotion	Repetition	Dropout	Promotion	Repetition	Dropout	Promotion	Repetition	Dropout	Grade 6	Grade 9	Grade 12
Sampov Lun	94.2	5.8	0.0	0.0	0.0	0.0	0.0	0.0	0.0	38	0	0
Angkor Ban	79.1	5.6	15.3	0.0	0.0	0.0	0.0	0.0	0.0	35	0	0
Ta Sda	77.2	2.2	20.6	72.9	0.3	26.8	75.5	3.8	20.8	92	101	16
Santepheap	80.9	4.7	14.4	0.0	0.0	0.0	0.0	0.0	0.0	155	0	0
Serei Mean Chey	73.6	7.7	18.6	90.0	0.0	10.0	0.0	0.0	0.0	62	37	0
Chrey Seima	65.2	6.6	28.2	0.0	0.0	0.0	0.0	0.0	0.0	50	0	0

## 13 Staff and Resources at the District

*This chapter presents data from the District Information System, collected around the middle of 2009 unless otherwise specified.*

### 13.1 District Councilors elected in 2009

Name	Sex	Year of Birth	Function	Phone
ផុន ផែន	M	1956	Chairperson of The Council	092-951 247
គង់ យ៉ង	M	1952	Councillor	012-220 442
វ៉ែម សារ៉ឺន	M	1960	Councillor	012-834 404
ដៃគូ ស្រស់	M	1956	Councillor	011-770 897
ពេជ យឹម	F	1954	Councillor	012-620 806
ស៊ី គង់	M	1945	Councillor	012-423 491
កុង កែវ	M	1953	Councillor	092-497 070
សូ ភី	M	1958	Councillor	012-900 691
តែម ម៉ង់	M	1952	Councillor	092-427 816
នាង ភឿន	M	1963	Councillor	092-428 105
អ៊ុន ហម	M	1953	Councillor	012-649 095

### 13.2 Committees of the Council

*Please note at the time of producing the district data books the composition of the committees was not known for all district councils and therefore data were not available for 13.2.1, 13.2.2, 13.2.3.*

#### 13.2.1 Technical Facilitation Committee

#### 13.2.2 Women's and Children's Affairs Committee

#### 13.2.3 Procurement Committee

### 13.3 Board of Governors

Name	Sex	DoB	Function	Salary Level	Body	Phone
ជុំ ស៊ីប	M	1954	District Governor	ក.៣.៣	High Ranking Civil Servant	012-442 542
លឹម ហឿង	M	1955	District Deputy Governor	ខ.១.៥	Medium Civil Servant	012-447 149
គង់ រម្យ	M	1956	District Deputy Governor	គ.១.៤	Secretary	012-298 545

### 13.4 Offices under Sala Krong, Sala Srok and Sala Khan

Office Name	Chief		Deputy Chief		No. of Staff				Office Area (m2)	No of vehicle (public or program)	
					State		Contract			vehicle	moto
	M	F	M	F	M	F	M	F			
Adminnistration Office	1	0	1	0	7	3	0	0	20	0	0
Economy Office	1	0	0	0	1	0	1	0	20	0	0
Social Affair Office	0	0	1	0	0	0	0	0	20	0	0

### 13.5 Municipality/District/Khan line offices

Office Name	Chief		Deputy Chief		No. of Staff				Office Area (m2)	No of vehicle (public or program)	
					State		Contract				
	M	F	M	F	M	F	M	F		vehicle	moto
District/ Khan Police Headquarter	1	0	3	0	69	0	0	0	301.5	1	4
District/ Khan Military Police Headquarter	1	0	4	0	20	0	0	0	69	1	0
Planning Office	1	0	0	0	2	0	1	0	Borrow	0	3
Rural Development Office	1	0	0	0	0	0	0	0	76.2	0	0
Women Affairs Office	0	0	0	0	0	0	0	1	Borrow	0	0
Environment Office	1	0	1	0	0	1	0	0	Borrow	0	0
Education Office	1	0	2	0	5	0	0	0	64	0	1
District/ Khan Operational Office	1	0	2	0	16	1	0	0	118.8	3	11
Agriculture Office	1	0	1	0	3	0	4	3	108	0	12
Social Affairs Office	1	0	1	0	0	1	0	0	Borrow	0	0
Culture Office	0	0	0	0	0	0	1	0	Borrow	0	0
Cult and Religion Office	0	0	0	0	0	0	1	0	Borrow	0	0
Information Office	1	0	0	0	0	0	0	0	Borrow	0	0
Post Office	1	0	0	0	0	0	0	0	Borrow	0	0
Lan Management Office	1	0	0	0	0	0	0	0	Borrow	0	0
Tax Unit	0	0	0	0	3	0	0	0	Borrow	0	0

### 13.6 Properties and Equipment of District Administration

#### 13.6.1 Buildings

Description	Unit	Number	Remark
Office building type			
- Concrete	building	0	
- Wood	building	0	
- Mixed	building	1	
Total floor space	m2		
- Concrete	m2	0	
- Wood	m2	0	
- Mixed	m2	192	
Building condition			
- Concrete	%	0	
- Wood	%	0	
- Mixed	%	65	
Office reserved land area	m2	0	
Total office land area	m2	4,800	

**13.6.2 Means of Transport available at the District Administration**

Description	Unit	Number	Remark
Vehicle (type, size and condition)	Vehicle	0	
Motorcycle (type, size and condition)	Motor	0	

**13.6.3 Equipment in District Offices**

Description	Unit	Number	Remark
Generator	per set	0	
Photocopy machine at the office	per set	0	
Private photocopy machine at the district town	place	0	
Telephone network (land line service)	network	0	
Fax (include Fax number)	per set	0	
Computer	per set	2	
Printer	per set	0	
Scanner	Per set	0	
Number of computers those can access Internet and email services in the municipality/ district/khan office (including the technical line offices (please provide the email address)	set	0	
Typewriters (including the technical line offices)	per set	0	
Staff of Municipality/district/khan office can use computer	person	2	

**13.6.4 Equipment and facilities at the District Town**

Description	Unit	Number	Remark
Availability of electricity at noon	Nr Hours	7	
Private internet and email services in the municipality/ district/khan town.	place	0	

**13.7 Registered Revenue of the District Administration in 2008<sup>4</sup>**

Sources of Revenue	Revenue Collecting Agency	Estimated annual revenue (In Riels)
Tax on business	Provincial Taxation Branch	8,647,000
Patent	Provincial Taxation Branch	1,145,000
Transportation Tax	Provincial Taxation Branch	58,625,000
Check Point	Camcontrol	19,649,870
Custom Tax	Custom and Levy	335,519,843

<sup>4</sup> Please note that the data in this table are at best estimates. If the table appears blank it does not mean there is no revenue, just that the data have not been recorded/entered.

## 13.8 Services in the District

### 13.8.1 Public Sector Services

Type of Infrastructure/services	Unit	Number	
		Public	Private
Schools			
Pre-school	room		
Primary School	room	77	0
Secondary school	room	19	0
High School	room	6	0
University	room		
Health			
Health post	place		
Health center	place	2	0
Referral Hospital	bed	66	0

## 13.9 Civil Society Organizations active in the District

### 13.9.1 NGOs, Associations, Programs and Projects

Name	Abbr.	Sector Activities	No. of Target Communes	No. of Target Villages	Office in District
NA	NA	កសិកម្ម	2	9	No
NA	AHEAD	អេដស៍ និងរបេង	6	26	No
NA	T.C.F	គ្រោះថ្នាក់ដោយសារមីន	6	26	No
NA	ADMAC	កសិកម្ម និងឥណទាន	6	26	No
NA	E.M.I	ជួយទស្សនាវដ្តីសុខភាព	6	26	No
NA	S.E.N	បណ្តាញភូមិសុខភាព	6	26	No
NA	RACHA	ឧបត្ថម្ភឱសថ	6	26	No
NA	O.E.C	កុមារពិការ	6	26	No
NA	U.R.C	គ្រួសារចាស់ និងព័ត៌មាន	6	26	No
NA	UNFPA	គាំទ្រសុខភាពបន្តពូជ គាំពារមាតា និងទារក	6	26	No
NA	NA	ហេដ្ឋារចនាសម្ព័ន្ធ និងកសិកម្ម	6	26	No

### 13.9.2 Political Parties active in the Municipality, District and Khan

Name	Abbr.	Office in District
Cambodian People Party	CPP	Yes
FUNCINPEC Party	FUNCINPEC	Yes
NRP	NRP	Yes
SAM RAINSY Party	Sam Rainsy Party	Yes

### 13.10 Private Sector Organizations

#### 13.10.1 Registered Companies in 2008, by District

On private sector at commune and/or district level	BAT	Banan	Thmor Kol	Battambang	Bovel	Ek Phnom	Moung Ressey	Rattanak Mondol
<b>Businesses and Companies</b>								
Number of registered agricultural enterprises (except family farms)	11	0	0	1	1	0	0	1
Number of registered shops, restaurants, transporters and other services	3,051	239	10	1,348	48	265	446	4
Number of manufacturing companies	580	60	65	41	35	24	52	3
Number of registered forestry enterprises	2	0	0	0	0	0	0	0
Number of registered mining companies	25	6	0	16	2	0	0	0
Number of financial institutions	77	3	8	26	3	10	9	3
Number of other commercial institutions	73	n/a	1	1	n/a	25	n/a	n/a
Estimated number of informal enterprises (not registered)	2,546	157	811	158	217	149	150	68
<b>Employment</b>								
Number of people employed in 2008 by companies or any other enterprises	14,736	785	4,153	5,364	272	103	959	54
<b>Investment</b>								
Amount invested in 2008 by private sector (\$)	34,728,121	5706166	3,345,745	16,457,255	948,167	205,159	619,669	45,163
<b>Market</b>								
Number of markets, operating at least weekly	142	8	29	18	4	6	37	7

Continue...

On private sector at commune and/or district level	BAT	Sangker	Samlot	Sampov Loun	Phnom Prek	Kamrieng	Koh Kralor	Ruk Kakiri
<b>Businesses and Companies</b>								
Number of registered agricultural enterprises (except family farms)	11	4	0	2	0	2	0	0
Number of registered shops, restaurants, transporters and other services	3,051	4	47	360	183	89	8	0
Number of manufacturing companies	580	51	80	9	75	6	28	51
Number of registered forestry enterprises	2	2	0	0	0	0	0	0
Number of registered mining companies	25	0	1	0	0	0	0	0
Number of financial institutions	77	3	3	4	3	1	1	0
Number of other commercial institutions	73	1	n/a	32	n/a	n/a	9	4
Estimated number of informal enterprises (not registered)	2,546	20	53	104	138	357	42	122
<b>Employment</b>								
Number of people employed in 2008 by companies or any other enterprises	14,736	2,160	0	122	61	500	0	203
<b>Investment</b>								
Amount invested in 2008 by private sector (\$)	34,728,121	1,147,600	15,470	5,381,205	73,087	95,789	87,646	600,000
<b>Market</b>								
Number of markets, operating at least weekly	142	13	8	3	2	2	2	3

**Note:** These data are not comprehensive as different companies and business are registered with different departments and not all departments were able or willing to provide detailed information. The number of informal enterprises reflects a rough estimate, made at provincial level and could not be verified.

**Source:** Unofficially collected at Provincial Level

**13.10.2 Farmers in 2008, by District**

Credit	BAT	Banan	Thmor Kol	Battambang	Bovel	Ek Phnom	Moung Ressey	Rattanak Mondol
Volume of credit provided to farmers in 2008 (\$)	<b>13,707,032</b>	719972	83,295	247,893	599,725	169,285	583,473	1,200,120
Number of farmers receiving credit in 2008	<b>24,833</b>	810	1,943	1,534	3,473	1,052	4,578	2,059
Volume of credit provided to companies in 2008 (\$)	<b>19,557,000</b>	2160000	840,000	100,000	815,000	10,000	2,400,000	960,000

Continue...

Credit	BAT	Sangker	Samlot	Sampov Loun	Phnom Prek	Kamrieng	Koh Kralor	Ruk Kakiri
Volume of credit provided to farmers in 2008 (\$)	<b>13,707,032</b>	4,533,000	350,480	2,067,035	676,134	428,191	1,979,179	69,250
Number of farmers receiving credit in 2008	<b>24,833</b>	1,250	1,393	1,281	1,619	1,016	1,185	1,640
Volume of credit provided to companies in 2008 (\$)	<b>19,557,000</b>	420,000	960,000	2,300,000	2,700,000	4,500,000	672,000	720,000

**Note:** Please note that these data are not necessarily complete or correct. The data are derived from government agencies at provincial and district level which used different recording systems, did not always have complete data or were, sometimes, less than willing to share their data.

**Source:** Unofficially collected at Provincial Level



## **SECTION E: POVERTY DATA**



## 14 Data on Poverty

### 14.1 Predicted Poverty Rates for 2009, by commune

The **Predicted Family Poverty Rate** is based on a statistical model (robust multilevel mixed effect regression) at village level developed by the NCDD M&E Unit and uses CDB data for making an estimate of the predicted poverty rate (this is: *the portion of total families in the district or commune who are expected to be poor*) for the following year using current year data.

The basis for this predicted poverty rate also uses IDPoor (a project of the Ministry of Planning with technical assistance provided by GTZ) data

Commune	2004	2009
Sampov Lun	35.70%	25.50%
Angkor Ban	38.90%	27%
Ta Sda	29.40%	15.10%
Santepheap	28.10%	23.30%
Serei Mean Chey	34.60%	29.70%
Chrey Seima	38.20%	29.10%

### 14.2 Poverty data from survey

#### 14.2.1 Identification of Poor Households Program (IDPoor)

The Ministry of Planning IDPoor Program has developed standardized Procedures for Identification of Poor Households in rural areas. These Procedures are implemented using a participatory and consultative process by sub-national government structures and community representatives.

The IDPoor Program is managed by the Ministry of Planning (MOP), in cooperation with the Ministry of Interior's Department of Local Administration (DOLA). The program is supported by the Federal Republic of Germany, with technical assistance provided by German Technical Cooperation (GTZ). In 2009, AusAID also provided funding support to the Program.

#### Objective

The IDPoor Program aims to implement the Procedures for Identification of Poor Households in rural areas as widely as possible, in order to provide data on the level of poverty of areas and households that can be used by a large range of institutions and organizations for targeting services and development assistance to poor areas and poor households.

**Coverage:** During 2007, 2008 and 2009 the IDPoor Procedures have been implemented in 18 provinces (with partial or complete coverage), covering a total of around 7000 rural villages. The MOP and a number of NGO partners who are Health Equity Fund Operators have collaborated in collecting this data from different areas.

**Categorization:** Identified poor households are classified under two poverty categories: Poor Level 1 (very poor), and Poor Level 2 (poor). Households are classified based on data collected using a standard questionnaire, together with consideration by villagers of these households' special circumstances.

**Further information:** Please go to the IDPoor Program webpage at [www.mop.gov.kh/Projects/IDPoor/tabid/154/Default.aspx](http://www.mop.gov.kh/Projects/IDPoor/tabid/154/Default.aspx)

*This District has not yet been covered by IDPoor*